

# ICR-CCR (Canadian Competition Rules) Precisions 2020

---

Based on the International Ski Federation ICR  
Oct 2020

The Nordiq Canada Competition Rules 2020 edition includes the FIS International Ski Competition Rules, adopted by the FIS Council, Online Meeting May 2020, which form the basis of our Canadian rulebook and as updated with the FIS precisions adopted in October 2020. The 1st Section containing the CCR articles 100 to 125.5.3 (General Rules for All Nordiq Canada Sanctioned Events) have been written specifically for officials, coaches and competitors involved in Canadian events sanctioned only by a Canadian sport governing body.

*Not to be altered and redistributed in whole or in part without the written permission of Nordiq Canada [info@nordiqcanada.ca](mailto:info@nordiqcanada.ca) +1.403.678.6791*



## **Introduction**

The Nordiq Canada Competition Rules and Precisions 2020 edition includes the FIS International Ski Competition Rules and FIS precisions adopted in 2020 which form the basis of our Canadian rulebook.

The rules are based on the fundamental premise that they must ensure each competitor a fair and equal opportunity to win. As such, the rules impose a performance code on the competitors, the competition organizers and the officials.

Since many competitions held in Canada do not necessarily require the complexity of the FIS Rules, Nordiq Canada has inserted additional Canadian rules and precisions in boxes following the related FIS rule. This is particularly evident in situations where the many different age categories in most Canadian competitions have different requirements than the single age categories legislated by the FIS. The FIS Rules with the Canadian inserted rules and the principles embodied therein forms the Canadian Competition Rules and Precisions and as such must be followed at all events sanctioned by Nordiq Canada and its divisions.

FIS is the sanctioning body for the Open categories of NorAm and National Championship events, World Cups and Olympic Games. For these competitions the FIS Rules (without the Canadian rules and Precisions) must be followed. (A separate FIS International Ski Competition Rules Book is available on the FIS website)

Some events also have Technical Packages prepared by the sanctioning sport governing body. Technical Packages contain further guidelines for the conduct of that particular competition. They must also be consulted by the competition committee, coaches and athletes.

The 1st Section containing the CCR art.100 to 125.5.3 (General Rules for All Nordiq Canada Sanctioned Events) has been written specifically for officials, coaches and competitors involved in Canadian events sanctioned only by a Canadian sport governing body. The Appeal process for non-FIS sanctioned competitions is also included in this section. It does not contain the detail of the FIS 200 section. The 200 section still applies to Nordiq Canada sanctioned events when a particular rule has not been re-written into the 100 section.

Events Committee  
Nordiq Canada  
October 2020

## Table of Contents

Introduction .....	2
100 General Rules for all Nordiq Canada Sanctioned Competitions .....	12
100.1 How to use this Rule Book .....	12
100.5 Control .....	12
101 Classification and Types of Competitions .....	12
101.3 Classification of Competitions .....	12
101.4 Types of Competitions .....	13
102 Nordiq Canada Calendar.....	13
102.1 Candidature and Announcement.....	13
102.5 Calendar Fees .....	13
103 Nordiq Canada License .....	13
104 Qualification of Competitors .....	13
105 Competitors Obligations and Rights.....	14
106 Sponsorship and Advertising .....	14
107 Advertising and Commercial Markings.....	15
110 Organization of the Competition .....	15
111 Competition Organization .....	15
112 Insurance.....	15
113 Programme.....	15
114 Announcements.....	16
115 Entries .....	16
116 Team Captains' Meetings .....	16
117 Draw .....	16
118 Publication of the Results.....	16
119 Prizes.....	16
121 Medical Examinations and Doping.....	17
122 Competition Equipment .....	17
123 Sanctions For Nordiq Canada Tier 1 & Tier 2 Competitions not sanctioned by FIS.....	17
124 Procedural Guidelines .....	17
125 Nordiq Canada Competition Appeals Commission.....	18
125.1 Application.....	18
125.2. Appointments .....	18
125.3 Responsibility .....	18
125.4 Procedures .....	19
125.5 Further Appeals.....	19
126 Violation of Sanctions .....	19
200 Joint Regulations for all Competitions .....	20
200.2 Organisation and Conduct.....	20
200.3 Participation.....	20
200.4 Special Regulations.....	20
200.5 Control .....	20

<b>201</b>	<b>Classification and Types of Competitions .....</b>	<b>20</b>
201.1	Competitions with Special Rules and/or Limited Participation.....	20
201.2	Competitions with Non-Members of the FIS .....	21
201.3	Classification of Competitions .....	21
201.4	FIS Disciplines .....	21
201.5	FIS Events .....	21
201.6	Types of Competitions .....	21
201.7	FIS World Championship Programme .....	22
<b>202</b>	<b>FIS Calendar .....</b>	<b>22</b>
202.1	Candidature and Announcement.....	22
202.2	Organization of Races in other Countries .....	24
<b>203</b>	<b>License to participate in FIS Races (FIS License) .....</b>	<b>24</b>
203.5	Application for a change of FIS License Registration .....	24
<b>204</b>	<b>Qualification of Competitors .....</b>	<b>26</b>
204.1	A National Ski Association shall not support or recognize within its structure, nor shall it issue a license to participate in FIS or national races to competitors who: .....	26
<b>205</b>	<b>Competitors Obligations and Rights.....</b>	<b>26</b>
205.6	Support for the Competitors .....	27
205.8	Gambling on Competitions.....	27
<b>206</b>	<b>Advertising and Sponsorships .....</b>	<b>27</b>
206.1	Olympic Winter Games and FIS World Championships .....	28
206.2	FIS Events .....	28
206.3	Member National Ski Associations .....	28
206.4	Title and Presenting Sponsorship Rights .....	28
206.5	Use of Markings and supports .....	28
206.6	Advertising Packages .....	28
206.7	Sponsorships by commercial betting companies .....	28
<b>207</b>	<b>Competition Equipment and Commercial Markings.....</b>	<b>29</b>
207.1	Competition Equipment at FIS Events .....	29
207.2	Commercial Markings .....	30
<b>208</b>	<b>Exploitation of Electronic Media Rights.....</b>	<b>31</b>
208.1	General Principles.....	31
208.2	Definitions .....	32
208.3	Television .....	32
208.4	Radio.....	34
208.5	Internet .....	34
208.6	Mobile and portable devices .....	35
208.7	Future developments.....	35
<b>209</b>	<b>Film Rights .....</b>	<b>35</b>
<b>210</b>	<b>Organisation of Competition .....</b>	<b>35</b>
<b>211</b>	<b>The Organisation.....</b>	<b>35</b>
211.1	The Organiser .....	35
211.2	The Organising Committee .....	36

212	Insurance.....	36
213	Programme.....	37
214	Announcements.....	37
215	Entries.....	37
216	Team Captains' Meetings .....	38
217	Draw .....	38
218	Publication of Results.....	39
218.3	FIS Internet Policies and Exchange of Data relating to the FIS Competitions .....	39
219	Prizes.....	40
220	Team Officials, Coaches, Service Personnel, Suppliers and Firms' Representatives .....	41
220.5	The Different Types of Accreditation .....	41
221	Medical Services, Examinations and Doping.....	41
221.5	Gender of the Competitor .....	42
221.6	Medical Services Required from Event Organisers .....	42
222	Competition Equipment .....	42
222.6	Controls .....	43
222.7	Prohibited of scientific and medical Equipment at FIS Events .....	43
222.8	Fluorinated ski wax prohibition.....	44
223	Sanctions .....	44
223.1	General Conditions .....	44
223.2	Applicability .....	44
223.3	Penalties .....	45
223.5	The following Penalty decisions may be given verbally: .....	45
223.6	The following Penalty decisions shall be in writing:.....	46
224	Procedural Guidelines .....	46
224.1	Competence of Jury .....	46
224.3	Collective Offences .....	46
224.4	Limitation.....	46
224.8	All Jury decisions shall be recorded in writing and shall include:.....	47
224.10	Remedies .....	47
224.11	The following decisions of the Jury are not subject to appeal: .....	47
224.15	Costs of Proceedings.....	47
224.16	Enforcement of Monetary Fines .....	47
224.17	Benefit Fund.....	48
225	Appeals Commission .....	48
225.1	Appointments .....	48
225.2	Responsibility .....	48
225.3	Procedures .....	48
225.4	Further Appeals.....	49
226	Violation of Sanctions .....	49
226.1	Sanctions against individuals involved:.....	49
300	Cross-Country Competitions .....	50
A.	ORGANISATION .....	50
301	The Organising Committee (OC) .....	50

<b>302</b>	<b>The Competition Officials .....</b>	<b>50</b>
302.1	Appointment of the Competition Officials .....	50
302.1.3	Organising Committee Appointed Members .....	51
302.2	Competition Officials Appointed by the Chief of Competition .....	51
302.3	The Competition Officials and their Duties.....	51
<b>303</b>	<b>The Jury and its Duties .....</b>	<b>53</b>
303.1	Members of the Jury.....	53
303.2	The Role of the Technical Delegate (TD) and Assistant Technical Delegate (ATD) at WC, WSC, OWG, JWSC, COC and FIS competitions .....	54
303.2.1	Authority.....	54
303.2.2	Appointment .....	55
303.3	Duties of the Jury.....	55
303.4	Jury Duties before and during the Competition.....	56
<b>304</b>	<b>Reimbursement of Expenses .....</b>	<b>58</b>
304.1	Requirements of the Organizers .....	58
<b>305</b>	<b>Team Captains' Meeting.....</b>	<b>59</b>
305.1	Procedure.....	59
305.2	Agenda.....	59
<b>B.</b>	<b>THE CROSS-COUNTRY COMPETITIONS .....</b>	<b>60</b>
<b>310</b>	<b>Competition Formats and Programs .....</b>	<b>60</b>
310.1	Table for Distances and Course Lengths.....	60
310.2	Technique Definitions .....	61
310.2.2	Classical Technique .....	61
310.3	The Programs for OWG, WSC, JWSC, WC and FIS Competitions .....	62
310.3.2	World Cup .....	62
310.3.3	JWSC .....	63
310.3.4	U23 WSC .....	63
<b>311</b>	<b>Cross-Country Competition Courses.....</b>	<b>63</b>
311.1	Fundamental Characteristics .....	63
311.2	The Homologation .....	64
311.2.4	Definitions.....	64
311.2.5	Norms for Cross-Country courses. ....	64
311.2.6	Course width categories.....	69
311.3	Preparation of the Course .....	70
311.3.1	Pre-Season Preparation .....	70
311.3.2	General Preparation for the competition.....	70
311.3.3	Preparation for Classical Technique.....	71
311.3.4	Preparation for Free Technique.....	71
311.4	Marking the Course .....	71
311.5	Refreshment Stations .....	71
311.6	Training and Inspection of the Course .....	72
<b>312</b>	<b>The Cross-Country Stadium .....</b>	<b>72</b>
312.1	Stadium Area.....	72
312.2	Start Zone.....	72



312.3	Finish Zone .....	72
312.4	Exchange zone.....	73
312.5	Pit boxes .....	73
312.6	Working Conditions .....	73
312.7	Additional Facilities .....	73
312.8	Current Information Facilities .....	73
313	Official Entries for the Organizer.....	74
313.1	Procedure.....	74
313.2	Receiving official entry information for a specific competition .....	74
313.3	Late Entries .....	74
313.4	Substitution.....	74
313.5	Grouping .....	75
314	Starting Order.....	75
314.1	Principles.....	75
314.2	Draw .....	76
314.3	Manual Draw.....	76
314.4	Computer Draw .....	76
314.5	Using a Points System to Determine the Starting Order .....	77
314.6	Seeded Group.....	77
314.7	Bibs (Start Numbers).....	77
314.7.2	Leg Numbers .....	77
314.8	Start List.....	77
315	Start Procedures .....	78
315.1	Types of Starts.....	78
315.2	Interval Start Procedure.....	78
315.3	Mass Start Procedure.....	78
315.4	Pursuit Start Procedure.....	79
315.5	Heat Start procedure .....	80
315.6	Duties of the Start Officials .....	80
315.7	False Start Consequences.....	80
315.8	Marking of Skis .....	80
315.9	Temperature .....	81
316	Timing .....	81
316.4	Electronic Timing .....	81
316.4.2	Transponder Timekeeping .....	82
317	Results.....	82
317.1	Calculation of Results .....	82
317.1.2.1	Ties in overall standings.....	82
317.2	Publication of Results .....	83
C.	COMPETITION FORMATS.....	83
321.	Interval Start Competitions.....	83
321.1	Definition .....	83
321.2	Courses and stadium preparation.....	83
321.3	Entries - Substitution .....	84

321.4	Starting Order and Start Procedure .....	84
321.6	Jury and protests .....	84
322.	Mass Start Competitions.....	85
322.1	Definition .....	85
322.2	Courses and stadium.....	85
322.3	Entries - Substitution .....	86
322.4	Starting Order and Start Procedure .....	86
322.5	Timing and Results.....	86
322.6	Jury and protests .....	86
323.	Skiathlon Competitions .....	86
323.1	Definition .....	86
323.2	Courses and stadium.....	86
323.2.2	Pit Box area .....	87
323.3	Entries - Substitution .....	87
323.4	Starting Order and Start Procedure .....	88
323.5	Timing and results .....	88
323.6	Jury and protests .....	88
324.	Pursuit Competitions .....	88
324.1	Definition .....	88
324.2	Courses and stadium.....	88
324.3	Entries – Substitution.....	89
324.4	Starting Order and Start Procedure .....	89
324.5	Timing and Results.....	89
324.6	Jury and protests .....	89
325.	Individual Sprint Competitions.....	90
325.1	Definition .....	90
325.2	Courses and stadium.....	90
325.3	Entries – Substitution.....	91
325.4	Starting Order and Start Procedure .....	91
325.5	Timing and results .....	93
325.6	Jury and Protest.....	95
326	Team Sprint Competitions .....	95
326.1	Definition .....	95
326.2	Course and Stadium for Team Sprints .....	95
326.3	Entries – Substitution.....	96
326.4	Starting Order and Start Procedure .....	96
326.5	Timing and results .....	98
326.6	Jury and Protest.....	98
327	Relay Competitions .....	98
327.1	Definition .....	98
327.2	Course and Stadium for Relays .....	99
327.3	Entries - Substitution .....	99
327.4	Starting Order and Start Procedure .....	99
327.5	Timing and Results.....	100



327.6	Jury and Protest.....	100
D.	THE COMPETITION AND THE COMPETITORS .....	100
341	Requirements of the Competitors.....	100
341.1	Age Categories.....	100
341.2	FIS Points System.....	103
342	Medical Examinations .....	103
342.1	State of Health .....	103
343	Responsibilities of the competitors.....	103
343.10	Overtaking .....	104
343.12	Equipment exchange .....	105
343.13	Relay exchange.....	105
343.14	Overlapping.....	106
344	Responsibilities of Officials and Others .....	106
E.	NOT PERMITTED TO START, SANCTIONS .....	107
351	Not Permitted to Start .....	107
352	Sanctions .....	107
352.1	Procedure.....	107
352.2	Disqualification.....	108
352.3	Competition suspension .....	109
352.4	Time Penalty .....	109
352.5	Written Reprimand.....	110
352.6	Verbal Reprimand.....	110
352.7	Monetary Fine .....	110
F.	PROTESTS AND APPEALS .....	110
361	Protests .....	110
361.1	Types of Protests .....	110
361.2	Place of Submission .....	111
361.3	Deadlines for Submission.....	111
361.4	Form of Protests .....	111
361.5	Authorization .....	112
361.6	Settlement of Protests by the Jury .....	112
362	Right of Appeal .....	112
362.1	The Appeal .....	112
362.1.3	Deadlines .....	113
362.2	Postponing Effect .....	113
362.3	Submission .....	113
G.	POPULAR CROSS-COUNTRY COMPETITIONS.....	114
380	Definition of Popular Cross-Country Competitions (PCCC) .....	114
380.1	Competitions.....	114
381	Entries and Competitors.....	114
381.1	Entries.....	114
381.2	Licenses.....	114
381.3	Seeding .....	114

381.4	Grouping .....	114
381.5	Results .....	114
381.6	Competitors .....	115
382	Information .....	115
382.1	Announcement.....	115
382.2	Information for Competitors .....	116
384	The Course.....	116
384.1	Width .....	116
384.2	Start Area .....	116
384.3	Finish Area .....	117
384.4	Course Preparation .....	117
384.5	Measuring and Marking .....	118
384.6	Feeding .....	118
384.7	Course Layout.....	118
384.8	Bonus sprints.....	118
385	Control .....	119
385.1	Control Procedure.....	119
386	Medical and Safety.....	119
386.1	Medical Officer .....	119
386.2	Planning .....	119
386.3	Training .....	120
386.4	First Aid Stations.....	120
387	Sanctions, Protests and Appeals .....	120
388	Cold Weather Precautions .....	120
388.1	Background .....	120
388.2	Between minus 15° and minus 25° C.....	120
388.3	Minus 25° C and below .....	120
388.4	Warm Weather Precautions .....	121
389	Cancellation Procedure .....	121
389.1	Policy .....	121
390	International Ski Competition Rules.....	121
390.1	Fundamental Rule.....	121
H.	ROLLERSKI COMPETITIONS .....	122
396	Rollerski Competitions .....	122
396.1	Rollerski ICR Definitions .....	122
396.2	Competition Equipment .....	122
396.3	Competition Formats and Programs .....	123
396.4	Course and Stadium .....	124
396.5	General Course Preparations.....	125
396.6	Requirements of the Competitors .....	125
396.7	Refreshment Stations .....	125
396.8	Start and Finish Requirements .....	125
396.8.2	Finish Area Requirements .....	126

396.9	Exchange Zone.....	126
396.10	Classical Roller Ski Technique .....	126

*Some number sequences are purposefully omitted to retain alignment with the FIS ICR 200 Section*

## **100 General Rules for all Nordiq Canada Sanctioned Competitions**

### **100.1 How to use this Rule Book**

This 100 level section of the rules has been written specifically for events which are sanctioned by Nordiq Canada or by a Nordiq Canada Division. It follows the same guidelines as the 200 level sections of the FIS rules but has been simplified to meet the needs of Canadian competitions. Note that for FIS sanctioned competitions held in Canada, the FIS 200 level sections prevail.

All events listed in the Nordiq Canada calendar must be held under Nordiq Canada rules with the exception of Continental Cup or other events which are sanctioned by FIS but are held in Canada, in which case the FIS rules will prevail. The organizer may introduce minor modifications or simplifications to Nordiq Canada sanctioned events provided they have been approved in advance by the Nordiq Canada Events Committee or by the Technical Delegate. Rules in which the word “must” is used may not be changed by the Nordiq Canada Events Committee or by the Competition Jury in any circumstances.

100.1.1 Competitions for Para-Nordic athletes or competitions with controlled entries may be held under adapted rules, provided such rules conform with the basic principles of Cross Country Canada. All variations must be stated in the competition’s technical package. For IPC/WPNS Rules see: <http://www.paralympic.org/nordic-skiing/rules-and-regulations/rules>

100.1.2 Amendments to these rules can be requested by the Board of Directors of Nordiq Canada or the Chief Executive Officer (CEO). Such requests are presented directly to the Events Committee for review. If the Events Committee is in support of such an amendment, it will be presented to the CEO for approval at the next Board of Directors meeting.

### **100.5 Control**

All competitions listed in the Nordiq Canada Calendar must be supervised by a Technical Delegate appointed by the appropriate sport governing association.

100.6 Every legal sanction imposed and published in respect of a competitor, official or coach will be recognized by Nordiq Canada, its’ Divisions and their member clubs respectively.

## **101 Classification and Types of Competitions**

### **101.3 Classification of Competitions**

101.3.1 National Championships

- 101.3.2 Canada Winter Games
- 101.3.3 NorAm & Regional Championships (Eastern & Western)
- 101.3.4 Division Competitions
- 101.3.5 Club Competitions

## **101.4 Types of Competitions**

- 101.4.1 Olympic style competitions
- 101.4.2 Popular cross-country competitions - loppets

## **102 Nordiq Canada Calendar**

### **102.1 Candidature and Announcement**

- 102.1.1 Each Club is entitled to present its candidature for the organizing of the National Championships in accordance with the published criteria for the hosting of National Championships.
- 102.2 Nordiq Canada will publish the Nordiq Canada Calendar on the Internet.

### **102.5 Calendar Fees**

- 102.5.1 Nordiq Canada fixes a sanctioning fee for each event published in the Nordiq Canada Calendar.

## **103 Nordiq Canada License**

- 103.1 The Nordiq Canada license year begins on July 1st and finishes on June 30th of the following year.
- 103.2 To be eligible for participation in National Championships and Canada Winter Games, a competitor must have a Nordiq Canada racing license. To be eligible for preferred seeding in other Nordiq Canada sanctioned events, a competitor must have a Nordiq Canada racing license. Foreign competitors must have a valid license issued by their National Federation.
- 103.4 During the Nordiq Canada license year, a competitor may only participate in Nordiq Canada competitions for the club through which the license was first registered in the current Nordiq Canada license year
- 103.5 A competitor whose license has been suspended may have a new license issued after he has proven that any sanctions imposed have been fulfilled.

## **104 Qualification of Competitors**

- 104.1 Nordiq Canada will not issue a license to any competitors who:

- have conducted themselves in an improper or unsporting manner, or
- are not in good standing with Nordiq Canada, its member divisions or their member clubs

## **105 Competitors Obligations and Rights**

- 105.1 The competitors are obliged to make themselves familiar with the appropriate FIS/Nordiq Canada Rules and must comply with the additional instructions of the Jury.
- 105.2 Competitors are not permitted to use drugs prohibited by the Canadian Centre for Ethics in Sport.
- 105.3 Competitors must follow the FIS/Nordiq Canada Rules and Regulations and instructions of the Jury.
- 105.5 Competitors must behave in a correct and sportsmanlike manner towards members of the Organizing Committee, officials and the public.
- 105.6 Support for Competitors.
- 105.6.1 During a period of preparation, to be defined from time to time by Nordiq Canada, and during the period of actual competition, a competitor may accept:
- full compensation for travel to training and competition sites by train, air, car, or other means of transport
  - full reimbursement for accommodation during training and competitions;
  - pocket money;
  - compensation for loss of income according to decisions of Nordiq Canada;
  - social security including insurance, also covering accident or illness in connection with training or competition;
  - scholarships.
- 105.7 Nordiq Canada may reserve funds to secure a competitor's education and future career after retiring from active competitive skiing. The competitor has no claim to these funds directly. Funds shall be dispensed only according to the judgment of Nordiq Canada.

## **106 Sponsorship and Advertising**

- 106.1 Nordiq Canada through the CEO must authorize contracts with a commercial firm or organization for financial sponsorship and/or the supply of goods or equipment. This pertains to agreements that result in corporate branding at the event and is intended to avoid conflicts with Nordiq Canada sponsor brands.
- 106.5 Advertising with reference to tobacco or drugs (narcotics) is forbidden.
- 106.6 Advertising with reference to alcohol products is forbidden for junior age athletes.
- 106.7 Competition equipment at Nordiq Canada Sanctioned Events



Obscene names and/or symbols on clothing and equipment are forbidden.

## **107 Advertising and Commercial Markings**

Technical Specifications about the size, the form and the number of commercial markings are decided and published by Nordiq Canada in this rule book. For Nordiq Canada sanctioned events that do not include any FIS sanctioning, there are no commercial marking rules. (See also CCR art. 106).

## **110 Organization of the Competition**

### **111 Competition Organization**

- 111.1.1 The organizer of a Nordiq Canada competition is the person or group of persons who make the necessary preparations and directly carry out the running of the competition.
- 111.1.2 The organizer must ensure that accredited persons accept the regulations regarding the competition rules and Jury decisions.
- 111.2 The Organizing Committee  
  
The Organizing Committee consists of those members (physical or legal) who are delegated by the organizer. It carries the rights, duties and obligations of the organizer

### **112 Insurance**

- 112.1 The organizer must ensure liability insurance coverage for all aspects of the competition.

### **113 Programme**

A programme (race notice) of events must be published by the organizers for each competition listed in the Nordiq Canada Calendar. The program must contain the following:

- 113.1 Date and place of the competitions, together with information on the competition sites and the best ways of reaching them;
- 113.2 Technical data on the individual competitions and conditions for participation;
- 113.3 Names of principal officials;
- 113.4 Time and place for the first team captains' meeting and the draw;
- 113.5 Timetable for the beginning of the official training and the start times;
- 113.6 Location of the official notice board;

- 113.7 Time and place for the prize-giving;
- 113.8 Final date of entry and address for entries, including telephone, fax and e-mail address and website location.

## **114 Announcements**

- 114.1 The Organizing Committee must publish an announcement for the event. It must contain the information required by CCR art. 113. This should be provided through a website format and an associated email notice about the website.
- 114.2 Postponements or cancellations and program alterations of competitions listed in the Nordiq Canada Calendar must be communicated immediately by telephone, e-mail or telefax to all invited or entered divisions or clubs, and the appointed TD.

## **115 Entries**

- 115.1 All entries must be received by the Organizing Committee before the entry deadline. The Organizing Committee is not obliged to accept any late entries. An online registration process is expected for all NorAm and National Championships events (For example: Zone4 registration)

## **116 Team Captains' Meetings**

- 116.1 Team Captains and coaches must obey the decisions of the Jury and must behave in a proper and sportsmanlike manner.

## **117 Draw**

- 117.1 Competitors' starting order for each event is decided according to a specific formula by draw and/or point order as outlined in the official event announcement and/or the event technical package. (See ICR art. 314 for principles)

## **118 Publication of the Results**

- 118.1 The unofficial and official results will be published in accordance with the rules. (ICR art. 317.20)
- 118.2 The Organizing Committee must publish and distribute official results in accordance with instructions outlined in the appropriate technical package.

## **119 Prizes**

- 119.1 The detailed rules concerning the awarding of prizes will be published by Nordiq Canada. Prizes shall consist of mementos, cheques or cash.
- 119.2 If two or more competitors finish with the same time or receive the same points, they shall be given the same placing. They will be awarded the same prizes, titles or

diplomas. The allocation of titles or prizes by drawing lots or by another competition is not allowed

- 119.3 All prizes are to be awarded no later than the final day of a competition or event series.

## **121 Medical Examinations and Doping**

- 121.2 The competitor is responsible for ensuring that the condition of their health is suitable for the competition.
- 121.3 Doping is forbidden in accordance with the WADA Anti-Doping Protocols and those of the Canadian Centre for Ethics in Sport (CCES). Any offence under these rules will be punished to the full extent of these protocols.

## **122 Competition Equipment**

- 122.1 A competitor may only take part in a Nordiq Canada competition with equipment which conforms to the Nordiq Canada Regulations. A competitor is responsible for the equipment that they use. It is their duty to check that the equipment they use conforms to Nordiq Canada specifications and general safety requirements and is in working order.
- 122.2 The term competition equipment encompasses all items of equipment which the athlete uses in competitions. This includes clothing as well as apparatus with technical functions. The entire competition equipment forms a functional unit.

## **123 Sanctions For Nordiq Canada Tier 1 & Tier 2 Competitions not sanctioned by FIS** (refer to FIS ICR art. 223)

## **124 Procedural Guidelines** (refer to FIS ICR art. 224)

For Canadian competitions: When considering sanctions for Canadian competitions sections **123 Sanctions**, **124 Procedural Guidelines** and **126 Violation of Sanctions** the participant must reference ICR sections 223, 224 and 226 as the Canadian precisions adopt the same principles except for the following substitutions of named authorities:

The FIS becomes Nordiq Canada; FIS Council or Council becomes Nordiq Canada Board of Directors; National Ski Associations becomes Nordiq Canada Ski Division; Appeals Commission becomes Nordiq Canada Competition Appeals Commission and ICR becomes CCR Rules (where applicable)

In references to monetary fines all CHF Swiss francs will be considered Canadian dollars

The following exception will be observed in Canadian competitions:

- 124.14 deleted
- 124.17 All monetary fines are directed towards Youth Promotion.

## **125 Nordiq Canada Competition Appeals Commission**

### **125.1 Application**

The Nordiq Canada Competition Appeals Commission shall hear any appeals from Jury decisions in Nordiq Canada-sanctioned Tier 1 & Tier 2 competitions including those relating to categories of racers at Tier 1 competitions (e.g. National Championships, NorAm's and Canada Cups) which are not eligible to earn FIS points at those events. Note that those athletes at such Tier 1 competitions that are eligible to earn FIS points must use the FIS process in the event of appeals of Jury decisions.

- 125.1.2 The Nordiq Canada Competition Appeals Commission shall only hear appeals submitted in writing within 72 hours of the decision subject of appeal. 72 hours following the issuance of any decision, potential appellants are deemed to have accepted all decisions

### **125.2. Appointments**

- 125.2.1 Prior to the competition season the Chair of the Nordiq Canada Events Committee shall appoint from a pool of FIS Licensed Technical Delegates a Chair and a Vice Chair of the Nordiq Canada Competition Appeals Commission. The Vice Chair shall preside when the Chair is either unavailable or is disqualified for bias and prejudice.
- 125.2.2 The Chair shall appoint 3 members, which may include themselves and the Vice Chair, to the Nordiq Canada Competition Appeals Commission from licensed FIS Technical Delegates for each case appealed or submitted to be heard, whose decisions shall be by majority vote. In the event that a member of the Nordiq Canada Board is appointed, the presence of such member on the committee shall not be construed as bias.
- 125.2.3 To avoid either actual bias and prejudice or the appearance of bias and prejudice, members appointed to a Nordiq Canada Competition Appeals Commission shall not be members of the same Provincial or Territorial Division as the offender whose case is under appeal. In addition, members appointed to a Nordiq Canada Competition Appeals Commission must report voluntarily to the Chair any bias and prejudice they may hold for or against the offender. Persons who are biased and prejudiced shall be disqualified from serving on the Nordiq Canada Competition Appeals Commission by the Chair or, in the event the Chair is disqualified, by the Vice Chair.

### **125.3 Responsibility**

- 125.3.1 The Nordiq Canada Competition Appeals Commission shall only hold hearings with respect to appeals by an individual or group negatively affected by decisions of competition juries, or matters referred to it by competition juries recommending penalties in excess of those provided for in the Sanction rules.

## **125.4 Procedures**

- 125.4.1 The Appeal must be decided within 72 hours of receipt of the Appeal by the Chair, unless all parties involved in the Appeal agree in writing to an extension of time for the hearing.
- 125.4.2 All appeals and responses must be submitted in writing, including any evidence the parties intend to offer in support of or in response to the Appeal.
- 125.4.3 The Nordiq Canada Competition Appeals Commission shall decide on the location and format for the Appeal.
- The Nordiq Canada Competition Appeals Commission members are required to respect the confidentiality of the appeal until the decision is made public and to consult only with the other members of the panel during the deliberations.
- The Chair of the Nordiq Canada Competition Appeals Commission may request additional evidence from any of the parties involved, providing this does not require disproportionate means.
- 125.4.4 The Nordiq Canada Competition Appeals Commission shall allocate costs of the appeal pursuant to the Nordiq Canada Dispute Resolution and Appeals Policy.
- 125.4.5 Decisions of the Nordiq Canada Competition Appeals Commission may be announced orally at the conclusion of the hearing. The decision, together with its reasoning, shall be submitted in writing to Nordiq Canada, which shall deliver them to the parties involved, their National Associations or Nordiq Canada Division and all members of the Jury whose decision was appealed. In addition, the written decision shall be available at the Nordiq Canada Office.

## **125.5 Further Appeals**

- 125.5.1 Decisions of the Nordiq Canada Competition Appeals Commission may be appealed under the Nordiq Canada Dispute Resolution and Appeal Policy. This appeal can only be made on the basis of the Nordiq Canada Competition Appeals Commission not having remained free from bias and prejudice.
- 125.5.2 Appeals made under the Nordiq Canada Dispute Resolution and Appeal policy must be submitted to the Nordiq Canada office within 72 hours from the date of the publication of the Nordiq Canada Competition Appeals Commission decision.
- 125.5.3 An Appeal to the Nordiq Canada Competition Appeals Commission or Nordiq Canada will not delay the implementation of any penalty decision of the Competition Jury or Nordiq Canada Competition Appeals Commission.

## **126 Violation of Sanctions** (refer to FIS ICR art. 226)

---

## **1<sup>st</sup> Section**

---

### **200      Joint Regulations for all Competitions**

200.1      All events in the FIS Calendar must be held under the applicable FIS Rules.

#### **200.2      Organisation and Conduct**

Rules and instructions for the organisation and conduct of the various competitions are to be found in their respective rules.

#### **200.3      Participation**

Competitions listed in the FIS Calendar are only open to all properly licensed competitors entered by their National Ski Associations in accordance with current quotas.

#### **200.4      Special Regulations**

The FIS Council can authorise a National Ski Association to adopt rules and regulations to organise national or international competitions with different grounds for qualification but only provided that they do not go beyond the limits laid down in the present rules.

#### **200.5      Control**

All competitions listed in the FIS Calendar must be supervised by a Technical Delegate of the FIS.

200.6      Every legal sanction imposed and published in respect of competitors, official or trainer will be recognised by the FIS and the National Ski Associations respectively.

### **201      Classification and Types of Competitions**

#### **201.1      Competitions with Special Rules and/or Limited Participation**

National Ski Associations affiliated with the FIS - or clubs belonging to these National Ski Associations with the approval of their association - may invite neighboring National Ski Associations or their clubs to their own competitions. But these competitions must not be promulgated or announced as international competitions, and the limitation must be made clear in the announcement.

201.1.1      Competitions with special rules and/or limited participation or including non-members may be held under special competition rules as approved by the FIS Council. Any such rules must be published in the announcement.



## **201.2 Competitions with Non-Members of the FIS**

The FIS Council can authorise one of its member National Ski Associations to invite a non-member organisation (military etc.) to competitions, or accept invitations from such an organisation.

## **201.3 Classification of Competitions**

- 201.3.1 Olympic Winter Games, FIS World Ski Championships and FIS World Junior Ski Championships
- 201.3.2 FIS World Cups
- 201.3.3 FIS Continental Cups
- 201.3.4 International FIS Competitions (FIS Races)
- 201.3.5 Competitions with Special Participation and/or Qualifications
- 201.3.6 Competitions with Non-Members of the FIS

## **201.4 FIS Disciplines**

A discipline is a branch of a sport and may comprise one or several events. For example Cross-Country Skiing is a FIS Discipline, whereas the Cross-Country Sprint is an Event.

### *201.4.1 Recognition of Disciplines in the International Ski Federation*

New disciplines, comprising one or several events, widely practised in at least twenty-five countries and on three continents may be included as part of the programme of the International Ski Federation.

### *201.4.2 Exclusion of Disciplines from the International Ski Federation*

If a discipline is no longer practised in at least twelve National Ski Associations on at least two continents the FIS Congress may decide to exclude the discipline from the programme of the International Ski Federation.

## **201.5 FIS Events**

An event is a competition in a sport or in one of its disciplines. It results in a ranking and gives rise to the award of medals and/or diplomas.

## **201.6 Types of Competitions**

International competitions consist of:

### *201.6.1 Nordic Events*

Cross-Country, Roller Skiing, Ski-Jumping, Ski-Flying, Nordic Combined, Team Competitions in Nordic Combined, Nordic Combined with Roller skiing or In-line, Team Ski-Jumping, Ski-Jumping on plastic jumping hills, Popular Cross-Country races

- 201.6.2 *Alpine Events*  
Downhill, Slalom, Giant Slalom, Super-G, Parallel Competitions, Combined, KO, Team Competitions
- 201.6.3 *Freestyle Events*  
Moguls, Dual Moguls, Aerials, Ski Cross, Half Pipe, Team Event
- 201.6.4 *Snowboard Events*  
Slalom, Parallel Slalom, Giant Slalom, Parallel Giant Slalom, Half Pipe, Snowboard Cross, Big Air, Special competitions
- 201.6.5 *Telemark Events*
- 201.6.6 *Firngleiten*
- 201.6.7 *Speed Skiing Events*  
Speed 1 (S1), Speed 2 (S2), Speed 2 Junior (S2J)
- 201.6.8 *Grass Ski Events*
- 201.6.9 Combined Events with other Sports
- 201.6.10 Youth, Masters, Para Snow Events, etc.

## **201.7 FIS World Championship Programme**

- 201.7.1 To be included in the programme of the FIS World Championships, events must have a recognised international standing both numerically and geographically and have been included for at least two seasons in the World Cup before a decision about their admission can be considered.
- 201.7.2 Events are admitted no later than three years before specific FIS World Championships.
- 201.7.3 A single event cannot simultaneously give rise to both an individual and a team ranking.
- 201.7.4 Medals may only be awarded at the FIS World Championships and FIS Junior World Championships in all disciplines (Alpine, Nordic, Snowboard, Freestyle, Grass Skiing, Roller ski, Telemark, Speed Skiing) when there are a minimum of 8 nations participating in team competitions and 8 nations represented in an individual event.

## **202 FIS Calendar**

### **202.1 Candidature and Announcement**

- 202.1.1 Each National Ski Association is entitled to present its candidature for the organising of the FIS World Ski Championships in accordance with the published "Rules for the Organisation of World Championships"

- 202.1.2 For all other competitions, the registrations for inclusion in the International Ski Calendar have to be made to FIS by the National Ski Association according to the Rules for the FIS Calendar Conference published by the FIS.
- 202.1.2.1 The applications of the National Ski Associations (NSA) are entered using the FIS Calendar program in the member section of the FIS website: [www.fis-ski.com](http://www.fis-ski.com) by 31st August (31st May for the Southern Hemisphere).
- 202.1.2.2 *Allocation of competitions*
- Allocation of the competitions to the National Ski Associations is made through the electronic communication process between FIS and the National Ski Associations. In the case of FIS World Cup competitions, the calendars are subject to the approval of the Council, on proposal of the respective Technical Committee.
- 202.1.2.3 *Homologations*
- Competitions that appear in the FIS Calendar may only take place on competition courses or jumping hills homologated by the FIS.
- The homologation certificate number must be indicated when applying for the inclusion of competition in the FIS Calendar. In a number of Snowboard, Freestyle Ski, Freeski events the course or facility is built up for each competition that therefore do not have a permanent homologation. The course or facility approval process is therefore defined in the respective rules
- 202.1.2.4 *Publication of the FIS Calendar*
- The FIS calendar is published by FIS on the FIS website [www.fis-ski.com](http://www.fis-ski.com). It will be updated to reflect cancellations, postponements and other changes continuously by FIS.
- 202.1.2.5 *Postponements*
- In case of the postponement of a competition listed in the FIS Calendar, the FIS has to be informed immediately and a new invitation must be sent to the National Ski Associations, otherwise the competition cannot be considered for FIS points.
- 202.1.2.6 *Calendar Fees*
- In addition to the annual subscription, a calendar fee is set by the FIS Congress and is due for each year and for each event listed in the FIS Calendar. For additional events, a 50% surcharge will be made in addition to the regular calendar fee for applications submitted 30 days before the date of the competition. The calendar fee for a competition that has to be rescheduled remains the responsibility for payment in full of the original organising National Ski Association.
- At the beginning of the season, each NSA will receive an invoice for 70 % of its total invoice from the previous season. This amount will be debited from its FIS account. At the end of the season each NSA will receive a detailed invoice for all registered competitions during the season. The balance will subsequently be debited or credited to the NSA account at FIS.

### 202.1.3 *Appointment of Race Organizer*

In the event that the National Ski Association appoints a race organiser, such as an affiliated ski club, it shall do so using the form “Registration Form National Ski Association and Organiser” or by means of a similar written agreement. An application by a National Ski Association for inclusion of an event on the International Ski Calendar shall mean that the necessary agreement to organise the event has been established.

## 202.2 **Organization of Races in other Countries**

Competitions which are organised by other National Ski Associations may only be included in the FIS Calendar when the National Ski Association of the country concerned where the competitions will be organised gives its approval.

## **203 License to participate in FIS Races (FIS License)**

A licence to participate in FIS races is issued by a National Ski Association to competitors who fulfil the criteria for participation through registering the competitor with FIS in the respective discipline(s).

203.1 The FIS licence year begins on July 1st and finishes on June 30th of the following year.

203.2 To be eligible for participation in FIS events, competitors must have a licence issued by their National Ski Association. Such a licence shall be valid in the Northern and Southern hemispheres for the licence year only. The validity of a licence can be limited to participation in one specific country or in one or more specific events.

203.2.1 The National Ski Association must guarantee that all competitors registered with a FIS License to participate in FIS races accept the Rules of the International Ski Federation, in particular the provision which foresees the exclusive competence of the Court of Arbitration for Sport as the court of appeal in doping cases.

203.3 A National Ski Association may only issue a FIS licence to participate in FIS races when the competitors have proven their nationality and therefore eligibility by submitting a copy of their passport and signed the Athletes Declaration in the form approved by the FIS Council and returned it to his National Ski Association. All forms from under-age applicants must be counter signed by their legal guardians. Both the copy of the passport and signed Athletes Declaration must be made available to FIS on request.

203.4 During the FIS licence year, competitors may only participate in International FIS competitions with a FIS licence to participate in FIS races issued by one National Ski Association.

## 203.5 **Application for a change of FIS License Registration**

All applications to change license registration from one member National Ski Association to another are subject to consideration by the FIS Council at its Meetings in the spring (applications may only be submitted by 1<sup>st</sup> May each year). In principle

an application to change license registration will not be granted unless the competitors demonstrate their personal association with the new nation.

Prior to submitting an application to change license registration competitors must possess the citizenship and passport of the country for which they wish to compete. In addition, the competitors must have had their principal legal and effective place of residence in the new country for a minimum of two (2) years immediately prior to the date of the request to change registration to the new country/National Ski Association. An exemption to the two-year residency rule may be waived if the competitor was born in the territory of the new country, or whose mother or father is a national of the new country. Applications will not be accepted if a parent has obtained a passport for the new country, but is not resident, and/or there is no family ancestry.

Furthermore competitors are required to submit a detailed explanation with the application about their personal circumstances and the reason for requesting a change of license registration.

- 203.5.1 If competitors have already participated in FIS calendar events for a National Ski Association, they must have the written agreement to be released from the former National Ski Association in addition to be the citizenship, passport and residency requirements in art 203.5 before the new National Ski Association may submit a request to FIS for a change of registration.

If such a written agreement is not given, the competitor may not participate in any FIS calendar events for a period of twelve months from the end of the last season in which they competed for their present National Ski Association, nor may they be issued with a license to participate in FIS races by the new National Ski Association.

These rules are also valid when a competitor has more than one nationality and would like to change National Ski Association license registration.

- 203.5.2 The FIS Council reserves the right in its absolute discretion, to grant or to decline to grant, a change of licence notwithstanding the fulfilment of the aforementioned conditions where it deems it is contrary to the spirit of the rule and in the best interests of the International Ski Federation to do so (e.g. to decline to grant a change of license if a member National Ski Association tries to “import” a competitor).

- 203.5.3 In the event that a competitor does not fulfil all the criteria required to apply for a change of National Ski Association license registration, the onus shall be on the competitor to demonstrate in writing to the satisfaction of the FIS Council that such exceptional circumstances exist and it is in the best interests of the International Ski Federation to grant the change.

- 203.5.4 Competitors will retain their FIS Points if they change their National Ski Association under the condition that the former National Ski Association granted the release of the competitor.

- 203.5.5 In the event that any of the documents for an application to change license registration submitted by the National Ski Association (letter of release from the

former National Ski Association, passport, residency papers) are found to be false, the FIS Council will sanction the competitor and the new National Ski Association.

## **204 Qualification of Competitors**

### **204.1 A National Ski Association shall not support or recognize within its structure, nor shall it issue a license to participate in FIS or national races to competitors who:**

- 204.1.1 have conducted themselves in an improper or unsportsmanlike manner or have not respected the FIS medical code or anti-doping rules,
- 204.1.2 accept or have accepted, directly or indirectly, any money-payments for the participation at competitions,
- 204.1.3 accept or have accepted a prize of a higher value than fixed by article 219,
- 204.1.4 permit or have permitted their names, titles or individual pictures to be used for advertising, except when the National Ski Association concerned, or its pool for this purpose, is party to the contract for sponsorship, equipment or advertisements,
- 204.1.5 knowingly compete or have competed against any skier not eligible according to the FIS Rules, except if:
  - 204.1.5.1 the competition is approved by the FIS Council, is directly controlled by the FIS or by a National Ski Association, and the competition is announced as "open",
- 204.1.6 have not signed the Athletes Declaration,
- 204.1.7 are under suspension.
- 204.2 With the issuance of a licence to participate in FIS races and race entry the National Ski Association confirms that valid and sufficient accident insurance for training and competition is in place for the competitor and assumes full responsibility.

## **205 Competitors Obligations and Rights**

Competitors whatever their age, gender, race, religion or belief, sexual orientation, ability or disability have the right to participate in snow sports in a secure environment and protected from abuse.

FIS encourages all member nations to develop policies to safeguard and promote the welfare of children and young persons.

- 205.1 The competitors are obliged to make themselves familiar with the appropriate FIS Rules and must comply with the additional instructions of the Jury.
- 205.2 Competitors are not permitted to compete while under the influence of doping.
- 205.3 Competitors must follow the FIS rules and regulations and instructions of the Jury.



205.4 Competitors who do not attend the prize-giving ceremonies without excuse lose their claim to any prize including prize money.

In exceptional circumstances, competitors may be represented by another member of their team, but this person has no right to take their place on the podium.

205.5 Competitors must behave in a correct and sportsmanlike manner towards members of the Organising Committee, officials and the public.

## **205.6 Support for the Competitors**

205.6.1 *Competitors are registered with FIS by their National Ski Association to participate in FIS races may accept:*

205.6.2 Full compensation for travel cost to training and competition,

205.6.3 Full reimbursement for accommodation during training and competitions,

205.6.4 Pocket money,

205.6.5 Compensation for loss of income according to decisions of their National Ski Association,

205.6.6 Social security including insurance for training and competition,

205.6.7 Scholarships.

205.7 A National Ski Association may reserve funds to secure their competitors' education and future career after retiring from active competitive skiing.

The competitors have no claim to these funds which shall be dispensed only according to the judgement of their National Ski Association.

## **205.8 Gambling on Competitions**

Competitors, trainers, team officials and technical officials are prohibited from betting on the outcome of competitions in which they are involved. Reference is made to the FIS Rules on the Prevention of the Manipulation of competitions.

<https://www.fis-ski.com/en/inside-fis/document-library/general-regulations>

## **206 Advertising and Sponsorships**

In the context of this rule advertising is considered as the presentation, of signage or other visibility at the venue informing the public of the name of a product or service to achieve awareness of a company or an organisation and its brand name, activities, products or service. On the other hand Sponsorship provides a company with the opportunity to have a direct association with the competition or series of events.

## **206.1 Olympic Winter Games and FIS World Championships**

All Advertising and Sponsorship rights to the Olympic Winter Games and FIS World Championships belong to the IOC and to the FIS respectively and are subject to separate contractual arrangements.

## **206.2 FIS Events**

For all FIS Events the FIS Advertising Rules define the advertising opportunities in the competition area and are subject to the approval of the FIS Council. For the FIS World Cup Events the FIS Advertising Rules form an integral part of the FIS Organisers Agreement with the National Ski Associations and Organisers.

## **206.3 Member National Ski Associations**

Each FIS affiliated National Ski Association that organises events in its country which are included in the FIS calendars, has the authority as the owner of the event advertising rights to enter into contracts for their sale. In the case of FIS World Cup competitions these rights shall be defined in the Organiser Agreement upon approval of the FIS Council and considering the National Ski Associations responsibilities. In cases where a National Ski Association organises events outside its own country these FIS Advertising rules also apply.

## **206.4 Title and Presenting Sponsorship Rights**

In the case of FIS series approved by the FIS Council, FIS markets the rights of the title/presenting sponsor (alternative naming possible) package. For the FIS World Cup series these are marketed to appropriate sponsors that promote the image and values of the discipline concerned. The revenue generated from the sale of the title/presenting sponsor rights is invested by FIS to provide a professional organization.

## **206.5 Use of Markings and supports**

All advertising and commercial markings and supports used shall comply with the technical specifications set forth in the applicable FIS Advertising Rules.

## **206.6 Advertising Packages**

Location, number, size and form of the advertising are specified in the FIS Advertising Rules for each discipline. Detailed information including graphical illustrations is laid out in the discipline-specific Marketing Guides which are published on the FIS website. The Marketing Guides are reviewed and updated as necessary by the Committee for Advertising Matters and approved by the FIS Council prior to their publications.

## **206.7 Sponsorships by commercial betting companies**

206.7.1 FIS will not allocate Title / Presenting Sponsor rights to commercial betting companies.

- 206.7.2 Sponsorships of events by commercial betting companies is permitted subject to 206.7.3 below.
- 206.7.3 Advertising of commercial betting companies or other betting activities on or with the athletes (head sponsors, competition suits, starting bib(s) is prohibited with the exception of lotteries and companies operating non-sports betting only.
- 206.8 A National Ski Association or its pool may enter into contracts with a commercial firm or organisation for financial sponsorship and or the supply of goods or equipment if the specific company or organisation is acknowledged as an Official Supplier or Sponsor by the National Ski Association.
- Advertising using photographs, likeness or names of FIS competitors with any sportsman not eligible according to either the FIS eligibility rules or the eligibility rules of the IOC, is forbidden.
- Advertising with or on competitors with tobacco or alcohol products or drugs (narcotics) is forbidden.
- 206.9 All compensation under such contracts must be made to the National Ski Association or its ski pool which shall receive the compensation subject to the regulations of each National Ski Association.
- Competitors may not directly receive any part of such compensation except as stated in ICR art. 205.6. The FIS may at any time call for a copy of the contract.
- 206.10 Equipment goods supplied to and used by the national team must, with reference to markings and trademarks, conform with the specifications stated in ICR art. 207.

## **207 Competition Equipment and Commercial Markings**

### **207.1 Competition Equipment at FIS Events**

Only the competition equipment, according to the FIS rules on advertising, provided by the National Ski Association, complete with the commercial markings approved by the National Ski Association, may be worn in FIS World Cup and FIS World Ski Championship competitions. Obscene names and/or symbols on clothing and equipment are forbidden.

- 207.1.1 At FIS World Ski Championships, FIS World Cups and all events of the FIS Calendar, a competitor is not allowed to take equipment (skis/board, poles, ski boots, helmet, glasses) to the official ceremonies involving anthems and/or flag raising. Holding/carrying equipment on the victory podium after conclusion of the whole ceremony (handing over trophies and medals, national anthems) for press photos, pictures, etc. is however permitted.

### 207.1.2 *Winners presentation / Equipment on the podium*

At FIS World Ski Championships and all events of the FIS Calendar, a competitor is allowed to take the following equipment on the podium:

- Skis / Snowboards
- Footwear: The athletes may wear their boots on their feet, but are not allowed to wear them anywhere else (such as around their neck). Other shoes cannot be taken on the podium during presentation except if they are worn on the feet.
- Poles: not on/around skis, normally in the other hand
- Goggles: either worn or around the neck
- Helmet: if worn only on the head and not on another piece of equipment, e.g. skis or poles
- Ski straps: maximum of two with name of the producer of skis; eventually one can be used for a wax company
- Nordic Combined and Cross-Country Ski Poles Clips. A clip can be used to hold the two poles together. The clip can be the width of the two poles, though not wider than 4 cm. The length (height) can be 10 cm. The long side of the clip is to be parallel to the poles. The commercial marking of the pole manufacturer can cover the entire surface of the clip.
- All other accessories are prohibited: waist bags with belt, phones on neck-bands, bottles, rucksack/backpack, etc.

207.1.3 An unofficial presentation (flower ceremony) of the winner, and the winners' ceremony immediately after the event in the event area with the national anthem even before the protest time has expired, is allowed at the organiser's own risk. Visible wearing of the starting bibs is mandatory.

207.1.4 Visible wearing of the starting bib of the event or other outerwear of the NSA is mandatory in the restricted corridor (including the leaderboard and TV interview locations).

## 207.2 **Commercial Markings**

Specifications about the size, the form and the number of commercial markings on equipment and clothing as well as the by-laws for commercial markings and for advertising are to be reviewed by the Committee for Advertising Matters and approved by the FIS Council each spring for the following competition season and published by the FIS.

207.2.1 The rules governing commercial markings and advertising on equipment and clothing as well as the relevant by by-laws published in the Specifications for Competition Equipment/Commercial Markings must be followed.

207.2.2 Any competitor who breaches the advertising rules is subject to sanctions, as provided for in art. 223.1.1. An offence for which a sanction may apply and a penalty be imposed is defined as conduct that is in violation or non-observance of competition rules.

- 207.2.3 If a National Ski Association fails to enforce these rules with their own competitor(s) or for any reason prefers to refer the case to the FIS, the FIS may take immediate steps to suspend a competitor's licence. The competitors concerned and/or their National Ski Association have the right to make an appeal before a final decision is taken.
- 207.2.4 If an advertiser uses the name, title or individual picture of competitors in connection with any advertisement, recommendation or sale of goods without the approval or knowledge of the competitor, the competitor may give a "power of attorney" to their National Ski Association or to the FIS to enable them, if necessary, to take legal action against the company in question. If the competitor concerned fails to do so, the FIS shall judge the situation as if the competitor had given permission to the company.
- 207.2.5 The FIS Council shall be informed of infractions or breaches of these rules that have taken place with regard to the qualification of competitors, sponsorship and advertising and support for the competitors And shall review what measures to take to deal with cases.

## **208 Exploitation of Electronic Media Rights**

### **208.1 General Principles**

#### *208.1.1 Olympic Winter Games and FIS World Championships*

All Media rights to the Olympic Winter Games and FIS World Championships belong to the IOC and to the FIS respectively, and are subject to separate contractual arrangements.

#### *208.1.2 Rights owned by the member National Ski Associations*

Each FIS affiliated National Ski Association that organises events in its country which are included in the annual FIS calendars, has the authority as the owner of the electronic media rights to enter into contracts for the sale of the electronic media rights on those events. In cases where a National Ski Association organises events outside its own country, these rules also apply, subject to bi-lateral agreement with the National Ski Association of the country where the event takes place

#### *208.1.3 Promotion*

Contracts shall be prepared in consultation with the FIS with the intention of giving the widest promotion and exposure to the sports of skiing and snowboarding and considering the best interests of the National Ski Association.

#### *208.1.4 Access to events*

For all competitions, admission of personnel and their equipment to the media areas will be limited to those having the necessary accreditation and access passes. Priority access will be given to rights holders and the system of accreditation and access control must avoid possible abuse by non-rights holders.

#### **208.1.5** *Control by the FIS Council*

The FIS Council exercises control over the adherence to the principles of this Rule by National Ski Associations and all organisers. Should a contract or individual clauses thereof, create a major conflict of interest for the FIS, a member National Ski Association or its organiser, then this will be evaluated by the FIS Council. Full information will be provided so that the appropriate solution can be found.

### **208.2** **Definitions**

In the context of this rule the following definitions will apply:

“Electronic Media Rights” means the rights for Television, Radio, Internet and Mobile devices.

“Television rights” means the distribution of television images, both analogue and digital, comprising video and sound, by means of terrestrial transmitters, satellite, cable, fibre or wire for public and private viewing on television screens. Pay-per-view, subscriptions, interactive TV, video on demand services, IPTV or similar technologies, are also included in this definition.

“Radio rights” means the distribution and reception of radio programmes, both analogue and digital, over the air, by wire or via cable to devices, both fixed and portable.

“Internet” means access to images and sound through interconnected computer networks.

“Mobile and portable devices” means the provision of images and sound through a telephone operator and receivable on mobile telephone or other non fixed devices, such as Personal Digital Assistants.

### **208.3** **Television**

#### **208.3.1** *Standard of production and promotion of competitions*

In the agreements concerning production with a TV organization or agency acting as the host broadcaster, the quality of TV transmissions for ski and snowboard events published in the FIS Calendar – especially for FIS World Cup competitions - must be considered. Of particular importance, while taking into consideration applicable national laws and rules affecting broadcasting are:

- a) Top quality and optimal production of a TV signal (for live or deferred transmission depending on the event) in which sport is the centrepiece;
- b) Adequate consideration and appearance of venue advertising and event sponsors;
- c) A standard of production in conformity with the FIS TV Production Guidelines and appropriate to current market conditions for the discipline and to the level of the FIS competition series. This means live coverage of the entire event including the winner presentation for live transmission (unless circumstances determine that a



live production is not provided). This coverage shall be produced in a neutral way, shall not concentrate on any athlete or nation and shall show all competitors.

- d) The live international signal of the host broadcaster must include appropriate graphics in English, particularly the official FIS logo, timing and data information, results and international sound.
- e) Where it is appropriate to the individual TV market, there should be live TV transmission in the country where the event takes place and in other countries with a high interest.

### 208.3.2 *Production and Technical costs*

Except when otherwise agreed between the National Ski Association and the agency/company managing the rights, the cost of producing the television signal for the exploitation of the different rights will be borne by the broadcaster having acquired the rights in the country where the competition takes place or a production company mandated to produce the signal by the company owning the rights. In certain cases, the organiser or the National Ski Association may assume these costs.

For each of the different rights granted under this rule the technical expenses that are to be paid for by those organizations that have acquired the rights and which are seeking to access the television signal (original picture and sound without commentary), have to be agreed between the producing company or the agency/company managing the rights as applicable. This also applies to any other production costs that may be requested.

### 208.3.3 *Short Extracts*

Short extracts granting news access for non-rights holders are to be provided to television companies according to the following rules. It is noted that in a number of countries national legislation governs the showing of short extracts in news programmes.

These extracts may only be used in regularly scheduled news programmes and cannot be kept for archive purposes:

- a) In those countries where legislation exists regarding news access to sporting events then this legislation will apply for reporting on FIS events.
- b) In those countries where no legislation exists regarding news access by competing networks and provided that agreements between the company managing the rights and the primary rights holder take precedence then short extracts of a maximum of 90 seconds news access will be granted to competing networks by the agency/company managing the rights for transmission four (4) hours after the rights holding network has shown the competition. The use of this material will cease 48 hours after the end of the competition. If the rights holding network delays its transmissions by more than 72 hours from the end of the competition, then competing networks can show extracts of a maximum of 45 seconds commencing 48 hours after and ending 72 hours after the event itself. Any requests to exploit short extracts shall be addressed to the agency/company

managing the rights which shall grant to the broadcasters access to the short extracts subject to agreement regarding the technical costs incurred to receive the material.

- c) In those countries where no transmission rights have been purchased by a television company, all television organisations will be able to transmit short extracts of 45 seconds as soon as the material is available, subject to agreement with the agency/company managing the rights regarding the technical costs to be incurred to receive the material. Permission for the use of this material will expire after 48 hours.
- d) Short extracts will be produced by the host broadcaster or the agency/company managing the rights and distributed by that agency/company, taking into consideration 208.3.2 above.

## **208.4 Radio**

The promotion of FIS events through radio programmes will be encouraged by making available accreditation to the principle radio station(s) in each interested country. Access to the venue will be granted solely to those radio organisations that have obtained the necessary contractual authorisation from the rights holder and will be only for the production of radio (audio) programmes. If accepted by national practice and the authorisation is granted, these programmes can also be distributed on the internet site of the radio station.

## **208.5 Internet**

Unless the contract for the sale of the Electronic Media Rights on FIS events states otherwise, each television rights holder that also acquires the internet rights, will ensure that video streams from its website other than short extracts are geoblocked against access from outside its own territory. Regularly scheduled news bulletins containing material of FIS events may be streamed on the rights holding broadcaster's website provided no changes are made to the bulletin as transmitted in the original programme.

Video and audio material produced in public areas where accreditation, tickets or other permissions are not required to gain access must not contain race footage. It is recognised that new technology provides members of the public with the possibility to produce unauthorised video recordings that may be posted on websites. Appropriate information advising that the unauthorised production and use of video material is prohibited and that legal proceedings could be taken, will be shown at all entrances and printed on entrance tickets.

All National Ski Associations and the rights holders/agencies will give permission for short extracts to be placed on the FIS website for non-commercial use subject to the following conditions:

- a) When short extracts have not been acquired for Internet distribution the maximum duration of the news material from FIS competitions will be 30 seconds per discipline/per session and will be accessible on the FIS website until 48 hours

after the end of the competitions. The financial conditions relating to the provision of this material will be agreed between the FIS and the rights owner.

- b) The material will be provided by the rights owner or host broadcaster as soon as possible, but at the latest six hours after the end of the competition.

## **208.6 Mobile and portable devices**

In the cases where the rights for distribution by mobile and portable devices have been awarded, the rights purchaser/operator will be free to produce from the television signal the content it considers best meets the needs of its customers. Any live streaming of television programmes on a national basis using these devices shall not be altered from that available through other distribution channels.

In countries where no mobile distribution rights have been sold, short extracts or clips of a maximum duration of 20 seconds will be offered to operators when the material has been produced and for a period of 48 hours on the condition that the operators pay all related technical costs to the agency/company managing the rights.

## **208.7 Future developments**

The principles contained in ICR art. 208 shall be the basis for the exploitation of Electronic Media Rights to FIS events in the future. The FIS Council, on the recommendation of the National Ski Associations, the relevant commissions and experts, will establish the conditions considered appropriate to each new development.

## **209 Film Rights**

All agreements regarding film productions of FIS competitions will be between the film producer and the National Ski Association or the company managing the related rights. All contractual arrangements regarding the exploitation of other media rights will be respected.

## **210 Organisation of Competition**

### **211 The Organisation**

#### **211.1 The Organiser**

211.1.1 The organiser of a FIS competition is the person or group of persons who make the necessary preparations and directly carry out the running of the competition in the resort.

211.1.2 If the National Ski Association itself is not the competition organiser, it may appoint an affiliated club to be the organiser.

- 211.1.3 The organiser must ensure that accredited persons accept the regulations regarding the competition rules and Jury decisions, and in World Cup races the organiser is obliged to obtain the signature of all persons who do not have a valid FIS season accreditation to this effect.

## **211.2 The Organising Committee**

The Organising Committee consists of those members (physical or legal) who are delegated by the organiser and by the FIS. It carries the rights, duties and obligations of the organiser.

- 211.3 Organisers which hold competitions involving competitors not qualified under ICR art. 203 - 204 have violated the International Competition Rules and measures are to be taken against them by the FIS Council.

## **212 Insurance**

- 212.1 The organiser must take out liability insurance for all members of the Organising Committee. The FIS shall provide its employees and appointed officials, who are not members of the Organising Committee (e.g. equipment controller, medical supervisor, etc.), with liability insurance when they are acting on behalf of the FIS.
- 212.2 Before the first training day or competition, the organiser must be in possession of a binder or cover notes issued by a recognised insurance company and present it to the Technical Delegate. The Organising Committee requires liability insurance with coverage of at least CHF 1 million; whereby it is recommended that this sum is at least CHF 3 million; this sum can be increased according to decisions of the FIS Council (World Cup etc).
- Additionally, the policy must explicitly include liability insurance claims by any accredited participant, including athletes, against any other participant including but not limited to officials, course workers, coaches, etc
- 212.3 The Organiser respectively its' National Ski Association may request the FIS insurance broker to arrange cover for the competition (at the cost of the Organiser) if the organiser does not have the necessary insurance cover in place.
- 212.4 All racers participating in FIS events must carry accident insurance, in sufficient amounts to cover accident, transport and rescue costs including race risks, as well as an appropriate third-party liability insurance. The National Associations are responsible for adequate insurance coverage of all their racers sent and inscribed by them.
- The National Ski Association or their competitors must be able to show proof of the respective insurance coverage at any time on request of the FIS, one of its representatives or the organising committee.
- 212.5 All trainers and officials inscribed and sent to FIS events by a National Association must carry accident and third-party liability insurance, in sufficient amounts to cover accident, transport and rescue costs from damages caused. The National Ski

Association or their trainers and officials must be able to show proof of the respective insurance coverage at any time on request of the FIS, one of its representatives or the organizing committee.

## **213      **Programme****

A programme must be published by the organisers for each competition listed in the FIS Calendar which must contain the following:

- 213.1      name, date and place of the competitions, together with information on the competition sites and the best ways of reaching them,
- 213.2      technical data on the individual competitions and conditions for participation,
- 213.3      names of principal officials,
- 213.4      time and place for the first team captains' meeting and the draw,
- 213.5      timetable for the beginning of the official training and the start times,
- 213.6      location of the official notice board,
- 213.7      time and place for the prize-giving,
- 213.8      final date of entry and address for entries, including telephone, telefax and e-mail address.

## **214      **Announcements****

- 214.1      The Organising Committee must publish an announcement for the event. It must contain the information required by ICR art. 213.
- 214.2      Organisers are bound by the rules and decisions of the FIS in limiting the number of entries. A further reduction in entries is possible under ICR art. 201.1 provided it is made clear in the announcement.
- 214.3      Postponements or cancellations of competitions and programme alterations must be communicated immediately by telephone, e-mail or telefax to the FIS, all invited or entered National Ski Associations and the appointed TD. Competitions moved to an earlier date must be approved by the FIS.

## **215      **Entries****

- 215.1      All entries must be sent so that the Organising Committee receives them before the final date of entry. The organisers must have a final and complete list not later than 24 hours before the first draw.
- 215.2      National Ski Associations are not permitted to enter the same competitors in more than one competition on the same date.

- 215.3 Only National Ski Associations are entitled to make entries for international competitions. Every entry should include:
  - 215.3.1 Code number, name, first name, year of birth, National Ski Association;
  - 215.3.2 An exact definition of the event for which the entry is made.
- 215.4 Entries for FIS World Championships (see Rules for the Organisation of FIS World Championships).
- 215.5 The entry of a competitor by the National Ski Association for a race shall constitute a contract solely between the competitor and the organiser and shall be governed by the Athletes Declaration.

## **216 Team Captains' Meetings**

- 216.1 The time and location of the first team captains' meeting and of the draw must be shown in the programme. The invitations for all other meetings have to be announced to the team captains at their first meeting. Emergency meetings must be announced in good time.
- 216.2 Representation by a substitute from another nation during discussions at team captains' meetings is not allowed.
- 216.3 The team captains and trainers must be accredited by the organisers according to quota.
- 216.4 Team captains and trainers must obey the ICR and the decisions of the Jury and must behave in a proper and sportsmanlike manner.

## **217 Draw**

- 217.1 Competitors' starting order for each event and each discipline is decided according to a specific formula by draw and/or point order.
- 217.2 The competitors entered by a National Ski Association will only be drawn if provided written entries have been received by the organiser before the closing date.
- 217.3 If competitors are not represented at the draw by a team captain or trainer, they will only be drawn if it is confirmed by telephone, telegram, e-mail or telefax by the beginning of the meeting that the competitors who are entered will participate.
- 217.4 Competitors who have been drawn and are not present during the competition must be named by the TD in the TD report, indicating if possible, the reasons for absence.
- 217.5 Representatives of all the nations taking part must be invited to the draw.
- 217.6 If a competition has to be postponed by at least one day, the draw must be done again.

## **218 Publication of Results**

218.1 The unofficial and official results will be published in accordance with the rules for the specific event.

### **218.1.1 Transmission of Results**

For all international competitions, there must be direct communication between the Start and the Finish. In Olympic Winter Games the communications must be assured by fixed wiring.

In the data service area, access to the internet (at least ADSL speed) is required for World Cup, World Championships and Olympic Winter Games competitions.

218.2 The data and timing generated from all FIS competitions is at the disposal of FIS, the organiser, the National Ski Association and participants for use in their own publications, including websites. Use of data and timing on websites is subject to the conditions laid down in the FIS Internet Policies.

## **218.3 FIS Internet Policies and Exchange of Data relating to the FIS Competitions**

### **218.3.1 General**

As part of the ongoing promotion of skiing and snowboard, the International Ski Federation encourages and appreciates the efforts made by the National Ski Associations to provide messages and information to their members and fans. An increasingly important medium for this provision of information is through the Internet.

The following policy has been established in order to assist National Ski Associations through the provision of data from FIS competitions, and to clarify certain conditions that relate to the use and presentation of the data from FIS competitions.

### **218.3.2 FIS Calendar data**

The online FIS Calendar programme has been developed for the free use of National Ski Associations and is available in the members Section of the FIS website.

### **218.3.3 Results and Standings**

National Ski Associations can obtain official results, after they have been approved by the FIS points verification procedure at the FIS Office. This data will be available on request to the FIS IT Manager who will provide the necessary instructions and/or routines on a case-by-case basis. The FIS World Cup results will include a credit to the results service providers. Standings from the various Cup series will also be available after receipt from the results service providers in the case of the FIS World Cup, or they have been input manually for other Cup series.

1. The results and data from FIS competitions may only be used on the National Ski Associations', Organisers' and participants' websites and may not be passed on for commercial use to third parties or organisations.

The National Ski Association may download the data into its' own software for evaluating performances, etc.

2. National Ski Associations who wish to display results on their website, but do not have a database structure to upload the raw data can create a link to the relevant page of the FIS website. The exact addresses can be obtained from the FIS IT Manager.
3. A link will be established from the FIS Website to all National Ski Associations with their own website, as well as the ski industry and relevant media websites on requests. A reciprocal link to the FIS website should also be created.

#### 218.3.4 *Organisers access to results*

Organisers of FIS World Cup races can obtain official results from their races after they have been approved by the FIS points verification procedure in the results database. The upload is a computer-automated procedure for World Cup races and takes place immediately after the end of the race.

The pdf file containing the results and standings can be downloaded from [www.fis-ski.com](http://www.fis-ski.com) followed by the discipline code and the name of the site: AL (Alpine), CC (Cross-Country), JP (Ski Jumping), NK (Nordic Combined); SB (Snowboarding), FS (Freestyle Skiing) etc. The individual competition can be identified by the competition codex as published on the detailed page of the calendar on [www.fis-ski.com](http://www.fis-ski.com).

## **219 Prizes**

- 219.1 The detailed rules concerning the awarding of prizes will be published by the FIS. Prizes shall consist of mementos, diplomas, cheques or cash. Prizes for records are forbidden. The FIS Council decides in the autumn on the minimum respectively maximum values of the prize money approximately one and a half years before the competition season. The organisers have to inform the FIS by October 15th of the amount.
- 219.2 If two or more competitors finish with the same time or receive the same points, they shall be given the same placing. They will be awarded the same prizes, titles or diplomas. The allocation of titles or prizes by drawing lots or by another competition is not allowed.
- 219.3 All prizes are to be awarded no later than the final day of a competition or event series.



## **220 Team Officials, Coaches, Service Personnel, Suppliers and Firms' Representatives**

In principle these regulations apply to all disciplines, taking into consideration the special rules.

- 220.1 The Organising Committee of an event must provide the Technical Delegate with a list of suppliers and equipment service personnel accredited to the competition.
- 220.2 It is forbidden for suppliers and for persons in their service to advertise inside the restricted area or to wear clearly visible commercial markings on their clothing or equipment which do not conform with ICR art. 207.
- 220.3 Accredited service personnel and suppliers receive from the FIS an official FIS accreditation and must perform their specified function. The individual organisers are free to accredit additional company representatives or other important persons.
- 220.4 All accredited service personnel, suppliers and other persons who have the official FIS accreditation or a special accreditation from the organiser for course or jumping-hill have access to the courses and jumping-hills (according to special rules of the discipline).

### **220.5 The Different Types of Accreditation**

- 220.5.1 Technical Delegates, the Jury, and the persons mentioned in ICR art. 220.3 with clearly visible accreditation have access to the courses and jumping hills.
- 220.5.2 Servicemen attached to teams are permitted entry to start area and service area at the finish. They are not allowed entry to the courses or jumping-hills.
- 220.5.3 Company representatives accredited at the discretion of the organisers who do not have FIS accreditation are not permitted entry to the courses and restricted service areas.

## **221 Medical Services, Examinations and Doping**

- 221.1 National Ski Associations are responsible for the fitness of their competitors to race. All competitors, male and female are required to undergo a thorough evaluation of their medical health. This evaluation is to be conducted within the competitor's own nation.
- 221.2 If requested by the FIS Medical Committee or its representative, competitors must undergo a medical examination before or after the competition.
- 221.3 Doping is forbidden. Any offence under these FIS Anti Doping Rules will be punished under the provisions of the FIS Anti-Doping Rules.
- 221.4 Doping controls may be carried out at any FIS competition (as well as out- of competition). Rules and procedures are published in the FIS Anti- Doping Rules and FIS Procedural Guidelines.

## **221.5 Gender of the Competitor**

If any question or protest arises as to the gender of the competitor, FIS shall assume responsibility for taking the necessary steps to determine the gender of the competitor.

## **221.6 Medical Services Required from Event Organisers**

The health and safety of all those involved in a FIS competition is a primary concern of all event Organisers. This includes the competitors as well as volunteers, course workers and spectators.

The specific composition of the medical support system is dependent on several variables:

- The size and level of the event being held (World Championships, World Cup, Continental Cup, FIS-level, etc.)
- The estimated number of competitors, support staff and spectators
- The scope of responsibility for the Event Medical Organisation (competitors, support staff, spectators) should also be determined.

The Organiser / The Chief of Medical and Rescue Services must confirm with the race director or technical delegate that the required rescue facilities are in place before starting the official training or competition. In the event of an incident, the backup plan must be in place before recommencing the official training or competition.

The specific requirements concerning facilities, resources, personnel and team physicians are contained in the respective discipline rules and the FIS Medical Guide containing Medical Rules and Guidelines.

## **222 Competition Equipment**

222.1 Competitors may only take part in a FIS competition with equipment which conforms to the FIS Regulations. Competitors are responsible for the equipment that they use (skis, snowboard, bindings, ski boots, suit, etc). It is their duty to check that the equipment they use conforms to the FIS specifications and general safety requirements and is in working order.

222.2 The term competition equipment encompasses all items of equipment which the competitor uses in competitions. This includes clothing as well as apparatus with technical functions. The entire competition equipment forms a functional unit.

222.3 All new developments in the field of competition equipment must be approved in principle by the FIS.

The FIS does not take any responsibility for the approval of new technical developments, which at the time of introduction may contain unknown risk to the health or cause an increase in the risk of accidents.

222.4 New developments must be submitted by May 1st, at the latest, for the following season. The first year new developments can only be approved provisionally for the following season and must be finally confirmed prior to the subsequent competition season.

222.5 The Committee for Competition Equipment publishes equipment by-laws after approval by the FIS Council (definitions or descriptions of the equipment items which are allowed).

In principle unnatural or artificial aids which modify the performance of the competitors and/or constitute a technical correction of the individual's physical predisposition to a defective performance, as well as competition equipment which impact the health of the competitors or increase the risk of accidents are to be excluded.

## 222.6 Controls

Before and during the competition season or on submission of protests to the Technical Delegate at the competition concerned, various controls can be carried out by members of the Committee for Competition Equipment or official FIS Equipment Controllers. Should there be a well-founded suspicion that regulations were violated, the equipment items must be confiscated immediately by the controllers or Technical Delegates in the presence of witnesses and be forwarded sealed to the FIS, which will submit the items to a final control by an officially recognised institution. In cases of protest against items of the competition equipment, the losing party will bear the investigation costs.

No testing of equipment or material in independent laboratories may be requested at races where a FIS Technical Expert has performed the controls, unless it can be demonstrated that the controls have not been carried out according to the rules.

222.6.1 At all FIS events where official FIS measurement experts using the official FIS measurement tools are appointed, the result of measurements carried out at the time are valid and final, irrespective of previous measurements.

## 222.7 Prohibited of scientific and medical Equipment at FIS Events

It is prohibited for any National Ski Association, its representative or team members to bring and/or use any of the following scientific or medical equipment ("Equipment") into/at any Event Venue during FIS World Championships, World Cups and other competitions registered in the FIS Calendar:

- Oxygen tanks, cylinders and related devices;
- Hypoxic or hyperoxic tents, chambers and related devices;
- Cryogenic chambers for whole body cryotherapy and related devices.

It is the responsibility of the National Ski Association to ensure compliance with this Article 222.7 by all its representatives or team members. Failure to respect this Article 222.7 will be subject to Penalties provided by Article 223.3. In case of recurrence, disqualification of an athlete shall be imposed irrespective of whether the violation

of this provision would result in an advantage for the Athlete(s) with regard to the end result of the competition.

In addition to the sanctions listed above, the FIS may order the immediate removal of the Equipment from the Event Venue at the costs of the responsible NSA.

## **222.8 Fluorinated ski wax prohibition**

Use of fluorinated wax or tuning products containing fluorine is prohibited for all FIS disciplines and levels.

Fluorinated wax can be a competitive advantage and its use in competition will result in disqualification. (see competition rules and equipment specifications.)

*\*implementation of this rule will begin effective July 1, 2021*

## **223 Sanctions**

### **223.1 General Conditions**

*223.1.1 An offence for which a sanction may apply and a penalty be imposed is defined as conduct that:*

- is in violation or non-observance of competition rules, or
- constitutes non-compliance with directives of the jury or individual members of the jury in accordance with ICR art. 224.2 or
- constitutes unsportsmanlike behaviour

*223.1.2 The following conduct shall also be considered an offence:*

- attempting to commit an offence
- causing or facilitating others to commit an offence
- counselling others to commit an offence

*223.1.3 In determining whether conduct constitutes an offence consideration should be given to:*

- whether the conduct was intentional or unintentional,
- whether the conduct arose from circumstances of an emergency

*223.1.4 All FIS affiliated associations, including their members registered for accreditation, shall accept and acknowledge these rules and sanctions imposed, subject only to the right to appeal pursuant to the FIS Statutes and ICR*

### **223.2 Applicability**

*223.2.1 Persons*

These sanctions apply to:

- all persons who are accredited by the FIS or the organiser for an event published in the FIS calendar (an event) both within and without the confines of the competition area and any location connected with the competition, and

- all persons who are not accredited, within the confines of the competition area

## **223.3 Penalties**

*223.3.1 The commission of an offence may subject a person to the following penalties:*

- Reprimand - written or verbal
- Withdrawal of accreditation
- Denial of accreditation
- Monetary fine not more than CHF 100'000.--
- A time penalty

223.3.1.1 FIS-affiliated associations are liable to the FIS for the payment of any fines and incurred administrative expenses imposed on persons whose registration for accreditation they arranged.

223.3.1.2 Persons not subject to ICR art. 223.3.1.1 are also liable to the FIS for fines and incurred administrative expenses. If such persons do not pay these fines, they shall be subject to a withdrawal of any permission to apply for accreditation to FIS events for a period of one year.

223.3.1.3 Payment of fines is due within 8 (eight) days following their imposition.

*223.3.2 All competing competitors may be subject to the following additional penalties:*

- Disqualification
- Impairment of their starting position
- Forfeiture of prizes and benefits in favour of the organiser
- Suspension from FIS events

223.3.3 Competitors shall only be disqualified if their mistake would result in an advantage for them with regard to the end result, unless the Rules state otherwise in an individual case.

223.4 A jury may impose the penalties provided in 223.3.1 and 223.3.2, however they may not impose a monetary fine of more than CHF 5'000-- or suspend a competitor beyond the FIS event at which the offence occurred.

## **223.5 The following Penalty decisions may be given verbally:**

- reprimands
- the withdrawal of accreditation for the current event from persons who had not been registered with the organiser through their National Associations
- the withdrawal of the accreditation for the current event from FIS-accredited persons
- the denial of accreditation to the current event from persons who are within the confines of the competition area or any other location connected with the competition.

## **223.6 The following Penalty decisions shall be in writing:**

- monetary fines
- disqualification
- impaired starting position
- competition suspensions
- withdrawal of accreditation from persons who had been registered through their National Association
- withdrawal of accreditation of FIS accredited persons

223.7 Written Penalty decisions must be sent to the offender (if it is not a competitor), the offender's National Association and the Secretary General of FIS.

223.8 Any disqualification shall be recorded in the Referee's and/or the TD's Report.

223.9 All penalties shall be recorded in the TD's Report.

## **224 Procedural Guidelines**

### **224.1 Competence of Jury**

The Jury at the event has the right to impose sanctions according to the above rules by majority vote. In the case of a tie, the Chair of the Jury has the deciding vote.

224.2 Within the location, especially during the training and the competition period, each voting Jury member is authorised to issue oral reprimands and withdraw the accreditation which is issued for the current event.

### **224.3 Collective Offences**

If several persons commit the same offence at the same time and under the same circumstances, the Jury's decision as to one offender may be considered binding upon all offenders. The written decision shall include the names of all offenders concerned, and the scope of the penalty to be assessed upon each of them. The decision will be delivered to each offender.

### **224.4 Limitation**

A person shall not be sanctioned if proceedings to invoke such sanction have not been commenced against that person within 72 hours following the offence.

224.5 Each person who is a witness to an alleged offence is required to testify at any hearing called by the Jury, and the Jury is required to consider all relevant evidence.

224.6 The Jury may confiscate objects that are suspected of being used in violation of equipment guidelines.

224.7 Prior to the imposition of a penalty (except in cases of reprimands and withdrawal of accreditation according to ICR art. 223.5 and 224.2), the person accused of an offence shall be given the opportunity to present a defence at a hearing, orally or in writing.

## **224.8 All Jury decisions shall be recorded in writing and shall include:**

- 224.8.1 The offence alleged to have been committed
- 224.8.2 The evidence of the offence
- 224.8.3 The rule (s) or Jury directives that have been violated
- 224.8.4 The penalty imposed.
- 224.9 The penalty shall be appropriate to the offence. The scope of any penalty imposed by the Jury must consider any mitigating and aggravating circumstances.

## **224.10 Remedies**

- 224.10.1 Except as provided for in ICR art. 224.11, a penalty decision of the Jury may be appealed in accordance with the provisions in the ICR.
- 224.10.2 If an appeal is not filed within the deadline established in the ICR, the penalty decision of the Jury becomes final.

## **224.11 The following decisions of the Jury are not subject to appeal:**

- 224.11.1 Oral penalties imposed under ICR art. 223.5 and 224.2
- 224.11.2 Monetary fines less than CHF 1'000. -- (One Thousand Swiss Francs) for single offence and a further CHF 2'500. -- for repeated offences by the same person.
- 224.12 In all remaining cases, appeals are to be directed to the Appeals Commission, as per the ICR.
- 224.13 The Jury shall have the right to submit to the Appeals Commission recommendations for penalties in excess of monetary fines of CHF 5'000- and suspensions beyond the event in which the offence occurred (ICR art. 223.4).
- 224.14 FIS Council shall have the right to submit to the Appeals Commission comments with respect to any written penalty decisions by the Jury.

## **224.15 Costs of Proceedings**

Fees and cash expenses, including travel expenses (costs of the proceedings) are to be calculated comparable to costs paid to TD's and are to be paid by the offender. In the case of a reversal of Jury decisions, in whole or in part, the FIS covers all costs.

## **224.16 Enforcement of Monetary Fines**

- 224.16.1 The FIS oversees the enforcement of monetary fines and the costs of proceedings. Enforcement costs are considered costs of the proceedings.
- 224.16.2 Any outstanding monetary fines imposed on an offender are considered a debt of the National Association to which the offender is a member.

## **224.17 Benefit Fund**

All monetary fines are paid into the FIS Youth Promotion Fund.

224.18 These rules are not applicable to any violation of FIS Doping rules.

## **225 Appeals Commission**

### **225.1 Appointments**

225.1.1 The FIS Council shall appoint from the Discipline Sub-committee for Rules (or Discipline Committee if there is no Rules Sub-Committee) a Chair and a Vice Chair of the Appeals Commission. The Vice Chair shall preside when the Chair is either unavailable or is disqualified for bias and prejudice.

225.1.2 The Chair shall appoint 3 members to the Appeals Commission from the Discipline Rules Sub-Committee or Discipline Committee for each case appealed or submitted to be heard, which may include the Chair, whose decisions shall be by majority vote.

225.1.3 To avoid either actual bias and prejudice or the appearance of bias and prejudice, members appointed to an Appeals Commission shall not be members of the same National Association as the offender whose case is under appeal. In addition, members appointed to an Appeals Commission must report voluntarily to the Chair any bias and prejudice they may hold for or against the offender. Persons who are biased and prejudiced shall be disqualified from serving on the Appeals Commission by the Chair or, in the event the Chair is disqualified, by the Vice Chair.

### **225.2 Responsibility**

225.2.1 The Appeals Commission shall only hold hearings with respect to appeals by offenders or by the FIS Council from decisions of competition juries, or matters referred to it by competition juries recommending penalties in excess of those provided for in the Sanction rules.

### **225.3 Procedures**

225.3.1 The Appeal must be decided within 72 hours of receipt of the Appeal by the Chair, unless all parties involved in the Appeal agree in writing to an extension of time for the hearing.

225.3.2 All appeals and responses must be submitted in writing, including any evidence the parties intend to offer in support of or in response to the Appeal.

225.3.3 The Appeals Commission shall decide on the location and format for the Appeal.

The Appeals Commission members are required to respect the confidentiality of the appeal until the decision is made public and to consult only with the other members of the panel during the deliberations.



The Chair of the Appeals Commission may request additional evidence from any of the parties involved, providing this does not require disproportionate means.

225.3.4 The Appeals Commission shall allocate costs of the appeal pursuant to ICR art. 224.15.

225.3.5 Decisions of the Appeals Commission may be announced orally at the conclusion of the hearing. The decision, together with its reasoning, shall be submitted in writing to the FIS, which shall deliver them to the parties involved, their National Associations and all members of the Jury whose decision was appealed. In addition, the written decision shall be available at the FIS Office.

## **225.4 Further Appeals**

225.4.1 Decisions of the Appeals Commission may be appealed to the FIS Court in accordance with Article 52; 52.1 and 52.2 of the Statutes.

225.4.2 Appeals to the FIS Court shall be in writing and submitted to the FIS Secretary-General in accordance with the time limits prescribed in Article 52; 52.1 and 52.2 of the Statutes from the date of the publication of the Appeals Commission decision.

225.4.3 An Appeal to the Appeals Commission or to the FIS Court will not delay the implementation of any penalty decision of the Competition Jury or Appeals Commission.

## **226 Violation of Sanctions**

Where there is a violation of a sanction that has been imposed (according to ICR art. 223 or the FIS Anti-Doping Rules, the Council may impose such further and other sanctions that it considers appropriate. In such cases, some or all of the following sanctions may apply:

### **226.1 Sanctions against individuals involved:**

- a written reprimand;  
*and/or*
- a monetary fine not to exceed the sum of CHF 100'000.--  
*and/or*
- competition suspension at the next level of sanction - for example if a three month suspension for a doping offence was imposed, a violation of the suspension will cause a two year suspension; if a two year suspension for a doping offence was imposed, a violation of the suspension will cause a lifetime suspension;  
*and/or*
- withdrawal of accreditation from individuals involved.

226.2 Sanctions against a National Ski Association:

- withdrawal of FIS funding to the National Ski Association;  
*and/or*

- cancellation of future FIS events in the country involved;  
*and/or*
- withdrawal of some or all FIS membership rights, including participation in all FIS calendar competitions, voting rights at the FIS Congress, membership of FIS Committees.

---

## 2nd Section

---

### **300      Cross-Country Competitions**

- 300.1      FIS sanctioned competitions are governed by the following FIS publications: ICR – first section (200s), second section (300s), World Cup Rules, Rules and Guidelines of the FIS Points and annual Cross-Country Guidelines approved by the Cross-Country Committee.

<b>A.</b>	<b>ORGANISATION</b>
-----------	---------------------

### **301      The Organising Committee (OC)**

- 301.1      An OC must be appointed for an international competition. The OC consists of members appointed by the National Ski Association (NSA) and the OC. The OC administers the rights, duties and obligations of the organizer. See ICR art. 210.

<i>For Canadian competitions: An OC must be appointed for a National Championship.</i>
--

### **302      The Competition Officials**

#### **302.1      Appointment of the Competition Officials**

- 302.1.1      *FIS appointed officials are*
- At Olympic Winter Games (OWG) and World Ski Championships (WSC): the Technical Delegate (TD), Assistant TD, Jury Members FIS Race Director (RD) and the FIS Race Director Assistant (RDA)
  - At World Cup (WC): the TD, Assistant TD, FIS Race Director (RD) and the FIS Race Director Assistant (RDA)
  - At Junior World Ski Championships (JWSC): the TD, Assistant TD and one Jury member
  - At Continental Cups (COC) and FIS competitions: the TD
- RDA is not a voting member of the Jury but shall act as RD in the absence of the RD

#### 302.1.2 *NSA appointed officials are*

- At JWSC, WC, COC and FIS competitions: National Assistant TD

### 302.1.3 **Organising Committee Appointed Members**

302.1.3.1 The Organiser appoints all other members. For all Olympic Winter Games (OWG, YOG) and World Ski Championships (WSC, JWSC) the following key technical officials have to be submitted to the FIS Council for approval:

- Chief of Competition
- Ass. Chief of Competition
- Competition Secretary
- Chief of Course
- Chief of Stadium

302.1.3.2 The Chair of the OC or his/her Assistant represents the OC to the public and chairs the meetings of the OC. He/she cooperates before and after the competition closely together with FIS. See ICR art. 210.

Within the OC there must be one person appointed as the Chief of Competition who is qualified to conduct the competition and to supervise the technical aspects of the competition. The Competition Officials are specialists who are particularly well qualified for their assigned duties. Each official is allowed to do only one job. Officials must be easily recognized by their uniforms, armbands or badges.

### 302.2 **Competition Officials Appointed by the Chief of Competition**

302.2.1 The Competition Officials are

- Competition secretary
- Chief of course
- Chief of timekeeping and data processing
- Chief of stadium
- Chief of control and competition security

The chief of competition will appoint other officials as necessary.

### 302.3 **The Competition Officials and their Duties**

302.3.1 The chief of competition is responsible for all aspects of the competition and supervises the work of all other competition officials. They must inform the TD constantly about the preparatory work and about changes that may have to be made. They must provide course maps, course profiles, stadium plans, timetable etc to the jury members in due time prior to their arrival to the competition site.

302.3.2 The competition secretary is responsible for all secretarial work concerned with the technical aspects of the competition: entries, team captains' meeting, minutes, publication of start lists and results, protests.

- 302.3.3 The chief of course is responsible for the preparation (grooming, markings, and fencing) of the competition course, ski testing areas, warm-up course as well as proper setup and safe placement of any commercial marketing frames and structures.
- 302.3.4 The chief of timekeeping and data processing is responsible for the direction and coordination of the officials working in the timing area (starter, finish referee, finish controller, manual timers, electronic timers, intermediate timekeepers and calculations officials' work. The chief of timekeeping and data processing oversees the preparation of the Timing and Data Technical Report (TDTR) and xml file for the electronic transmittal to FIS following the competition. A copy of the report may also be printed (only if the TD has no access to their report) for review prior to the transmission of the xml file. The TDTR Software can be found on the FIS website.
- 302.3.5 The chief of stadium is responsible for all activities in the stadium area. This includes the course preparation and markings in the stadium, proper setup and safe placement of any commercial marketing frames and structures in the stadium, safe and well marked pathways for flow of competitors to the start. The chief of stadium is responsible for ensuring sufficient areas for athletes clothing, coaches, equipment suppliers, anti-doping officials and medical staff in the finish area as well as good cooperation with media and ceremonies in the finish area.
- 302.3.6 The chief of control and competition security is responsible to organize together with the jury the suitable placing of controllers, to collect all pertinent information and to report any incidents to the Jury as soon as possible.
- Two controllers are necessary for each post. The number and placing of the controllers is determined without notifying the competitors, coaches or other officials. The controllers at each post record violations and the passing of the competitors. They may use video equipment. After the competition they must inform the chief of control and competition security of any violations to the rules and be ready to testify before the Jury.
- 302.3.7 The chief of media information is responsible for providing optimal working conditions for media, equipment suppliers and competition officials in the media areas and the mixed zone. This includes the layout of the mixed zone, the positions for photographers, journalists and commentators. Rooms for press conferences and related media infrastructure must be provided. They are also responsible for the flow of pertinent information to the press, radio and TV, and for the efficient functioning of the loudspeakers at the stadium area.
- 302.3.8 The chief of medical services is responsible for the organization of all medical and first aid arrangements and for the quick transport of patients to the nearest appropriate medical facility.
- The first aid and medical services must be completely operational during all training times.
- Details of the Medical Support Requirements are given in chapter 1 of the FIS Medical Guide containing Medical Rules and Guidelines.

## **303      The Jury and its Duties**

### **303.1      Members of the Jury**

303.1.1      For all Olympic Winter Games (OWG) and World Ski Championships (WSC) the following will serve in the Jury:

- The TD, who is chair of the Jury (appointed by FIS)
- The Assistant TD (appointed by FIS)
- The Chief of Competition
- Two other foreign members (appointed by FIS).
- FIS Race Director (appointed by FIS)

The FIS officials mentioned above are appointed by the FIS Council on proposal by the Cross Country committee.

303.1.2      For WC the Jury will consist of the following

- The TD, (appointed by FIS)
- The Assistant TD (appointed by FIS)
- FIS Race Director (appointed by FIS)
- The Chief of Competition
- The National TD Assistant (appointed by the host NSA in cooperation with the regional TD coordinator)

303.1.3      For JWSC the Jury will consist of the following

- The TD (appointed by FIS)
- The Assistant TD (appointed by FIS)
- One jury member (appointed by FIS)
- The Chief of Competition
- The National TD Assistant (appointed by the host NSA in cooperation with the regional TD coordinator)

303.1.4      For University Winter Games (UWG) the Jury will consist of the following:

- The TD, who is chair of the Jury (appointed by FIS)
- The Assistant TD (appointed by FIS)
- The Race Director (appointed by FISU)
- The Chief of Competition
- The National TD Assistant (appointed by the host NSA in cooperation with the regional TD Coordinator)

303.1.5      For EYOF (European Youth Olympic Festival), Asian Winter Games (AWG) and for Roller Skiing WSC the Jury will consist of the following:

- The TD, who is Chair of the Jury (appointed by FIS)
- The Assistant TD, (appointed by FIS)

- The Chief of Competition
- The National TD Assistant (appointed by the host NSA in cooperation with the regional TD Coordinator)

303.1.6 For COC and FIS competitions, for Roller Skiing and FIS competitions the Jury will consist of the following

- The TD, who is chair of the Jury (appointed by FIS)
- The Chief of Competition
- The National TD Assistant (appointed by the host NSA in cooperation with the regional TD coordinator)

303.1.6.1 For COC and FIS competitions held in Canada and for Nordiq Canada sanctioned competitions run concurrently with a FIS sanctioned competition and for the Canada Winter Games, the Jury will consist of the following

- The TD, who is chair of the Jury (confirmed by FIS)
- The Chief of Competition
- The Nordiq Canada Race Director
- The TD Assistant (appointed by the host NSA)

303.1.6.2 For other Nordiq Canada sanctioned competition not covered by CAN-303.1.6, the jury will consist of the following:

- the TD who is chair of the Jury
- the Chief of Competition
- plus one of the following appointments:
- a Visiting Team Coach (appointed by the Team Leaders)
- a P/TSO appointee to act as an Assistant TD

## **303.2 The Role of the Technical Delegate (TD) and Assistant Technical Delegate (ATD) at WC, WSC, OWG, JWSC, COC and FIS competitions**

### **303.2.1 Authority**

The TD is the delegate of the FIS to the organizing body, and is a guarantor for the FIS that the competition is conducted in accordance with the FIS Rules. The TD must have a valid TD license and they must be able to speak and write in the English language. The TD has the responsibility to involve and utilize the FIS appointed assistant TD and the NSA appointed assistant TD in the preparation, the carrying out and the follow up of the competition. The TD is responsible for organizing the work of the jury.

### 303.2.2 Appointment

- 303.2.2.1 For OWG, WSC, WC and JWSC, the TD, Assistant TD and other jury members must possess a TD-license for Cross-Country.
- 303.2.2.2 For all OWG, WSC and WC competitions the TD and Assistant TD must be from another nation. For other international competitions, TDs from the same nation may be appointed. Competitions which appear regularly in the FIS Calendar shall have a foreign TD at least every four years.
- 303.2.2.3 For OWG, WSC, JWSC and WC competitions the TD and Assistant TD are appointed by the FIS Cross-Country Committee. For OWG and WSC the appointments of the FIS Cross-Country Committee must be confirmed by the FIS Council. For other international competitions the TDs are appointed by the Sub-Committee for Rules and Control. For JWSC, WC, COC and FIS competitions the NSA must appoint a National Assistant TD who is supervised and instructed by the TD.
- 303.2.2.4 Persons holding a position of responsibility for a Nations Team are not permitted to be nominated for the position of a TD or Jury member for OWG, WSC, JWSC and WC.

### 303.3 Duties of the Jury

- 303.3.1 The Jury must ensure that the competition is organized and carried out according to the FIS Rules. The responsibilities begin when the jury is appointed and end when protests from the final competition have been decided and the official results are published. The first Jury meeting should be held before the first official training.

*For Canadian competitions: The Jury must ensure that the competition is organized and carried out according to the Nordiq Canada Rules or Technical Package stipulations. The responsibilities begin when the jury is appointed and are ended when protests from the final competition have been decided.*

- 303.3.2 The Jury must clarify and decide
- Whether a competition shall be postponed, interrupted or cancelled.
  - Whether the competition course shall be adjusted due to safety reasons, or that additional safety measures (fences, protective material, etc) shall be installed along the course
  - Whether late entries and substitutions may be accepted
  - Whether protests should be accepted and sanctions or disqualification announced
  - Whether to apply for sanctions against an athlete or coach
  - Whether there will be a change of starting order and method of start in special cases
  - Any questions not covered by FIS Rules

303.3.3 Within the location, especially during the official training and competition times, each voting Jury member is authorized to issue oral reprimands and withdraw the accreditation which is valid for the current event (see also Art 224.2)

### **303.4 Jury Duties before and during the Competition**

303.4.1 Normally the jury members should arrive at the venue early enough to have two full working days before the first competition day.

TD is responsible that all jury duties are carried out and should distribute tasks among jury members according to their abilities and experience.

Jury members should be able to ski the course, and make a judgment of the course preparations.

303.4.2 Jury duties before arrival to competition site are related but not limited to

- Invitation
- Race program
- Entries and eligibility questions
- Course and stadium plans
- Snow conditions, contingency plans (in case of bad snow conditions)
- Site visits (if decided by FIS Cross-Country Committee)

303.4.3 Jury duties on competition site before competition are related but not limited to

- Liability insurance (ICR art. 212.2)
- Course:  
Homologation, Preparation (snow conditions, grooming, grooming equipment, forerunners, snow patrols, plans in case of extreme weather conditions including a salting plan), course marking, safety measures, coach / no coach areas, feeding stations, ski doo access paths (if applicable)
- Team area:  
Waxing facilities, test area, warm – up courses
- Stadium:  
Detailed plans, markings, fencing, general logistics, information points, loudspeakers
- Medical service  
First aid stations, Rescue plans, Doping control (facilities, chaperons)
- Team accommodation:  
Level, distance, pricing, meal arrangements and quality
- Race office:  
Location, organization, equipment, opening hours, information for the teams, forms, lists (FIS points, cup standings, written reprimand), entries (eligibility, quotas, FIS codes, grouping – if applicable)
- Team captains meeting:



Place, schedule, room equipment, refreshments, agenda, presentation, information for teams, test draw (if applicable), monitor the meeting and make decisions during the meeting if necessary

- Timing:  
Start and finish procedures, photo finish, primary timing, backup timing, data processing, start list content and layout, result list content and layout, XML data transmission to FIS, XML timing report data transmission to FIS
- Competition control:  
Posts, technique control, equipment, procedures, ski marking (if applicable)
- Jury:  
Working conditions, identification, communication
- Ceremonies:  
Schedule, award of prizes, protocol
- Media (if applicable):  
Press center, media information, press conferences
- Security:  
Accreditation system, identification, access points and access control
- Transportation

#### 303.4.4 Jury duties during competition are related but not limited to

- All jury members should be present on competition site in good time (normally 2 hours before first start)
- Can competitions start as scheduled (stadium and course preparation, weather conditions, teams on site)?
- Substitutions and late entries
- Changes to warm-up and ski test procedures on course
- Decide on re-grooming, rescheduling of forerunners and use of snow patrols if necessary
- Decide on salting of the course if necessary
- Inform teams on jury decisions
- Monitor the execution of competitions
- Decide on all reported infractions including ICR art. 207 and late starts (if force majeure was the reason for late start)
- Decide on valid protests
- Document jury decisions along with used evidence to be used in case of appeal
- Check timing and results, calculate race penalty, declare official results
- Check that official results are published on FIS website
- TD must prepare his/her TD report within 3 days after the competition.

*For Canadian competitions: While adhering to the basic principles of the rules, the Jury may implement minor modifications to the rules providing the word “must” has not been used in formulating the rule.*

## 304 Reimbursement of Expenses

### 304.1 Requirements of the Organizers

304.1.1 The TD has a right to reimbursement for all appointment related travel expenses at the least cost option (including but not limited to first class train, economy class airfare, baggage fees, car rental or mileage at a kilometer fee of CHF 0.70, basic meals, airport transfer, visa, health insurance, airport parking and highway taxes), as well as free accommodation and meals during the assignment. This rule also applies to agreed inspections as well as the trip to the competition. In addition a fixed daily rate of CHF 100 net is added for the travel days to and from, as well as each day of the assignment. Double charges (e.g. travelling home on the same day as the last race) are not permitted. If overnight accommodation during the journey to and from the assignment is necessary, this must be justified and reimbursed separately.

The maximum payment for personal vehicle transportation cannot exceed the equivalent cost of car rental, train fare of an airfare in economy class.

304.1.2 Reimbursement applies as follows:

- For OWG, WSC and JWSC special regulations apply.
- At WC for the TD, the foreign Assistant TD, and the national appointed assistant TD.
- At other international competitions for the TD and the national appointed assistant TD.

304.1.3 The right of reimbursement also applies in the event of race cancellation or postponement. Daily fees apply to the actual travel and assignment days. Travel expenses including non-refundable ticket costs of ticket change fees must also be reimbursed

For Canadian competitions: The Event Organizer must reimburse Nordiq Canada and/or Divisional TDs for travel expenses as per Nordiq Canada Policy 2.7.2, including the following practices:

- Car mileage (at Nordiq Canada rates) can't exceed the cost of an economy airfare or the cost of an economy car rental,
- Meal expense reimbursements are limited to the allowances specified in section 12 of the Nordiq Canada Policy
- Travel mode and anticipated expenses should be agreed to between the TD and the OC before travel to the site
- The FIS fixed daily fee of CHF 120/100 does not apply to Canadian FIS sanctioned competitions as TDs and ATD's are considered to be volunteers same as major officials of the OC. The only exception is for competitions where the FIS directly appoints the TD (i.e. World Cup, World Loppet, W Jr and Sr Championships)

## **305      Team Captains' Meeting**

### **305.1      Procedure**

- 305.1.1 Before each competition a Team Captains' meeting is carried out. It should take place one day before the competition.
- 305.1.2 The date, time and place of the Team Captains' meeting have to be published in the competition program (ICR art. 216). The jury decides how many representatives per participating team and how many accredited officials are allowed to take part in the Team Captains' meeting.
- 305.1.3 At OWG, WSC, WC and JWSC competitions the seating arrangements of the participating teams have to be marked.
- 305.1.4 At OWG, WSC, WC and JWSC competitions the Team Captains' meeting is held in English and also in the original language of the organizer if necessary. Supplementary translations should be provided.
- 305.1.5 The Team Captains' meeting is conducted by the chief of competition.
- 305.1.6 At the Team Captains' meeting, a majority of the voting members is enough for a jury recommendation. Each team has one vote.
- 305.1.7 When necessary, the Jury may decide to interrupt the meeting in order to make a decision on recommendations and bring this result back to the meeting (ICR art. 303.3.2).

### **305.2      Agenda**

- 305.2.1 A written agenda has to be distributed for the Team Captains' meeting. It is prepared by the competition secretary in cooperation with the chief of competition and the Jury.
- 305.2.2 At all international competitions the agenda normally contains the following items
- Roll call
  - introduction of the members of the OC
  - introduction of the Jury, if necessary appointment of the Jury
  - weather forecast
  - checking of the entries or grouping of the competitors
  - draw or start list composition
  - description of the stadium (access, ski marking (if applicable), start, finish, exchange zone for relay, tents for clothes changing, exit etc.)
  - description of the course (access, profile, locations for intermediate timing and feeding, security problems, course markings etc.)
  - preparation of the course
  - time, locations and regulations for ski testing

- times and courses for training
- general information from the TD
- general information from the FIS Race Director
- general information from the Organiser

305.2.3 Minutes which contain all topics of discussion, jury decisions and the recommendations made must be taken at the Team Captains' meeting.

## B. THE CROSS-COUNTRY COMPETITIONS

### 310 Competition Formats and Programs

#### 310.1 Table for Distances and Course Lengths

Race Format	Competition Distance (km)	Course Length (km)
Interval Start competition	2.5, 3.3, 3.75, 5, 7.5, 10, 15, 30, 50	2.5, 3.3, 3.75, 5, 7.5, 8.3, 10, 12.5, 15, 16.7
Mass Start competition (middle distance)	10, 15	2.5, 3.3, 3.75, 5, 7.5, 10, 15, 16.7
Mass start (long distance)	30, 50	Loops with min. length 5km should follow total requirements on TC and MC according to distance
Popular competitions	No limitations	No limitations
Skiathlon	5+5, 7.5+7.5, 10+10, 15+15	2.5, 3.3, 3.75, 5, 7.5, 10
Pursuit competition (2 <sup>nd</sup> part)	5, 7.5, 10, 15	2.5, 3.3, 3.75, 5, 7.5, 10
Relay competition (teams with 3 or 4 competitors, can include mixed gender)	2.5, 3.3, 5, 7.5, 10	2.5, 3.3, 3.75, 5, 7.5, 10
Individual Sprint	1 – 1.8	0.5 – 1.8
Team Sprint	2x (3-6) x 1 – 1.8	0.5 – 1.8

This table is valid for organizing multi-lap races but when choosing a short course with many laps the overall distance, start format and course width must be considered.

Individual sprint and Team Sprint competitions can be carried out on one or more laps.

The Maximum Distances for Canadian Competitions			
U14 Girls	7.5 km	U14 Boys	10 km
U16 Girls	10 km	U16 Boys	15 km
U18 Girls	20 km	U18 Boys	30 km
U20 Women	20 km	U20 Men	30 km
Senior Women	30 km	Senior Men	50 km
Masters Women	30 km	Masters Men	50 km

## 310.2 Technique Definitions

310.2.1 The jury may ban or enforce the use of specific techniques on marked sections of the course. All infractions will be reported to the jury.

### 310.2.2 Classical Technique

310.2.2.1 Classical technique includes the Diagonal Stride techniques, the double poling with or without diagonal kick, herringbone without a glide phase and turning techniques.

310.2.2.2 Diagonal Stride technique is comprised of alternating diagonal movements of both arms and legs and includes diagonal stride and herringbone techniques without a gliding phase. In diagonal technique a maximum of one pole is in the ground at any time.

310.2.2.3 Turning techniques are comprised of steps with the inner ski and pushes with the outer ski in order to change skiing directions. The sections of the course where turning techniques are allowed must be clearly marked.

310.2.2.4 Where there are one or more set tracks, repeatedly changing or stepping in and out of tracks is not allowed.

310.2.2.5 Single or double skating is not allowed.

### 310.2.3 Free Technique

Free technique includes all Cross-Country skiing techniques.

### 310.3 The Programs for OWG, WSC, JWSC, WC and FIS Competitions

#### 310.3.1 OWG and WSC

310.3.1.1 For the OWG and the WSC competitions, the program is

Interval Start competitions:	Men:	15 km C/F
	Women:	10 km C/F
Mass Start competitions:	Men:	50 km C/F
	Women:	30 km C/F
Skiathlon:	Men:	15 km C – 15 km F
	Women:	7.5 km C – 7.5 km F
Relay competitions:	Men:	4 x 10 km C/F
	Women:	4 x 5 km C/F
Individual Sprint competitions:	Men:	1.0 – 1.8 km C/F
	Women:	1.0 – 1.8 km C/F
Team Sprint competitions	Men	1.0 – 1.8 km C/F
	Women:	1.0 – 1.8 km C/F

*NOTE: Techniques (C/F) will alternate between OWG and WSC, as well as between Individual and Team Sprint competitions, and between Interval Start and Mass Start competitions.*

The composition of the program can change due to the fact that there are more competition days available during the OWG than at WSC. The TV coverage will be a major factor in these considerations.

Skiathlon will always be conducted with classical technique first and then free technique.

The Relay competitions will be conducted using two legs classical first and then two free technique legs.

310.3.1.2 At WSC a qualification competition will be scheduled for the athletes who did not reach the entry requirements (check the WSC Rules).

#### 310.3.2 World Cup

The program for the World Cup season is determined by the FIS every year. Distances and techniques are decided annually. To be able to support development of the Cross-Country sport, test competitions can be a part of the WC program. Long distance competitions may be included.

### 310.3.3 JWSC

For JWSC competitions the formats, distances and techniques will be

	Women	Men
Interval Start	5 km F/C*	10 km F/C*
Mass Start	15 C/F*	30 C/F*
Sprint	1.0 – 1.8 km C/F*	1 – 1.8 km C/F*
Relay	4 x 3.3 km C/F	4 x 5 km C/F

\* Interval Start and Sprint competitions will alternate techniques each year.

Sprint and Mass Start competitions will be held in the same technique.

### 310.3.4 U23 WSC

	Ladies	Men
Interval Start	10 km F/C*	15 km F/C*
Relay	4x5 Mixed Relay	
Sprint	1 – 1.8 km C/F*	1 – 1.8 km C/F*

\* Interval Start and Sprint competitions will alternate techniques each year.

## 311 Cross-Country Competition Courses

### 311.1 Fundamental Characteristics

311.1.1 Cross-Country courses must be laid out so that they provide a technical, tactical and physical test of the competitors' qualifications. The degree of difficulty should be in accordance with the level of the competition. The course should be laid out as naturally as possible to avoid any monotony, with rolling undulating sections, climbs, and downhill sections.

Rhythm should not be broken by too many sharp changes in direction or steep climbs. The downhill sections must be laid out so that they create a challenge to the competitors. At the same time it should be possible to ski the course even under fast conditions.

311.1.2 *In principle, the Cross-Country course should consist of*

- One third up hills defined as climbs with a gradient between 9% (1:11) and 18% (1:5.5) with height differences over 10 meters plus some short climbs steeper than 18%.
- One third undulating, rolling terrain, utilizing all terrain features with short climbs and downhills (with height differences of 1-9 meters).

- One third varied downhills, demanding versatile downhill techniques.

- 311.1.3 At OWG, WSC, JWSC, WC and COC Cross-Country competitions the courses may only be used in the direction established in the homologation certificates.
- 311.1.4 A test area should be prepared and clearly marked along or near the competition course.
- 311.1.5 Warm up courses should be prepared as close as possible to the stadium.

## **311.2 The Homologation**

- 311.2.1 All FIS Cross-Country competitions should be carried out on homologated courses. Exceptions are: popular competitions, Rollerskiing competitions, substitute courses if approved by the Jury. The details on homologation procedure are described in FIS Cross Country homologation manual.
- 311.2.2 In competitions designed for CC sport promotion it is possible to use courses outside of the homologation standards providing they have been approved by the Sub-Committee for Rules and Control.
- 311.2.3 The Organizer must supply copies of the approved course maps and the homologation certificate to its TD. A graduated scale and a north direction arrow must be included.

## **311.2.4 Definitions**

- 311.2.4.1 HD (height difference) is the difference in height between the lowest and highest points of a competition course.
- 311.2.4.2 MC (Maximum climb) is the climb with the highest partial total climb (PTC), in other terms, the biggest uphill. The uphill can be interrupted by a section of undulating terrain that does not exceed 150 m in length or a downhill that does not exceed 10 m PHD.
- 311.2.4.3 TC (Total climb) represents a total of all climbs on the course.

## **311.2.5 Norms for Cross-Country courses.**

For Canadian competitions: The height differences, maximum climbs, and total climb norms stated below are considered guidelines for designing courses. Therefore, these limits may be exceeded in competitions to take into consideration that there is often more than one category competing on the same course. In these situations, the younger age categories should be run on courses at the lower limit of the older category guidelines.

For Canadian Homologation Guidelines visit the document centre at [www.nordiqcanada.ca](http://www.nordiqcanada.ca)



The HD, TC and MC of the FIS homologated competition courses should be within the following norms:

Course distance (loop length)	Minimum climb (in PHD m)* <sup>2</sup>	HD	MC (in PTC m)	TC
Sprint F		Max. 50m	0 – 30 m	0 – 60 m
Sprint C	15 m	Max. 50m	15 – 40 m	20 – 60 m
2.5 km	1 climb > 15 m	Max. 50 m	25 – 50 m	75 – 105 m
3.3 km	1 climb > 25 m	Max. 65 m	25 – 65 m	100 – 140 m
3.75 km	1 climb > 30 m	Max. 80 m	30 – 80 m	110 – 160 m
5 km	1 climb > 30 m	Max. 100 m	30 – 80 m	150 – 210 m
7.5 km	2 climbs > 30	Max. 125 m	30 – 80 m	200 – 315 m
8.3 km	3 climbs > 30 m	Max. 125 m	30 – 80 m	210 – 330 m
10 km	3 climbs > 30	Max 125 M	30 – 80 m	250 – 420 m

Longer loops should follow the same principles.

<sup>2</sup>A climb is defined as an uphill with a gradient from 9 – 18%, broken up with short undulating sections less than 150 meters in length, steep uphill = 4m <PHD< 10m, gradient > 18%, or a downhill that does not exceed 10 m partial height difference (PHD). The average gradient of the climb, including undulating terrain and downhill sections must be 6 – 14%.

### Height Difference (HD) For Canadian Competitions:

Course or Loop Length (km)									
Category	Sprint 0.4-1.8	1.5	2.5	3.0-3.3	3.75	5	7.5	10	15 and over
U8 Girls & Boys	10m	10m							
U10 Girls & Boys	10m	10m							
U12 Girls	10m	10m	10m	20m					
U12 Boys	10m	10m	10m	20m					
U14 Girls	20m	20m	20m	40m	50m	60m	80m		
U14 Boys	20m	20m	20m	40m	50m	60m	80m	80m	
U16 Girls	30m	30m	30m	50m	60m	75m	100m	125m	
U16 Boys	30m	30m	30m	50m	60m	75m	100m	125m	150m
U18 Boys	50m	50m	50m	65m	75m	100m	125m	150m	200m
U18 Girls	50m	50m	50m	65m	75m	100m	125m	150m	200m
U20 Women	50m	50m	50m	65m	75m	100m	125m	150m	200m
U20 Men	50m	50m	50m	65m	75m	100m	125m	150m	200m
Senior Women	50m	50m	50m	65m	75m	100m	125m	150m	200m
Senior Men	50m	50m	50m	65m	75m	100m	125m	150m	200m
Master Women	50m	50m	50m	65m	75m	100m	125m	150m	200m
Master Men	50m	50m	50m	65m	75m	100m	125m	150m	200m

<b>Recommended Maximum Climb (MC)</b> <i>For Canadian Competitions:</i> Course or Loop Length (km)									
Category	Sprint	1.5	2.5	3.0-3.3	3.75	5	7.5	10	15 +
U8 Girls & Boys	0-10m	10m							
U10 Girls & Boys	0-10m	10m							
U12 Girls	0-10m	10m	10m	10m					
U12 Boys	0-10m	10m	10m	10m					
U14 Girls	5-15m	15m	25m	25m	25m	25m	30m		
U14 Boys	5-15m	15m	25m	25m	25m	25m	30m	30m	
U16 Girls	5-20m	20m	35m	35m	35m	35m	50m	50m	
U16 Boys	5-20m	20m	35m	35m	35m	35m	50m	50m	
U18 Boys	10-	30m	50m	50m	50m	50m	65m	80m	
U18 Girls	10-	30m	50m	50m	50m	50m	65m	80m	
U20 Women	10-	30m	50m	50m	50m	50m	65m	80m	
U20 Men	10-	30m	50m	50m	50m	50m	65m	80m	
Senior Women	10-	30m	50m	50m	50m	50m	65m	80m	
Senior Men	10-	30m	50m	50m	50m	50m	65m	80m	
Master Women	10-	30m	50m	50m	50m	50m	65m	80m	
Master Men	10-	30m	50m	50m	50m	50m	65m	80m	

<b>Recommended Total Climb (TC)</b> For Canadian Competitions: Course Length (km)												
Category	Sprint Cl 0.4-1.8	1.5	2.5	3.0- 3.3	3.75	5	7.5	10	15	20	30	50
U8 Girls & Boys	0-10m	0-10m										
U10 Girls & Boys	0-10m	0-10m										
U12 Girls	0-10m	10-20m	20-45m	30-60m								
U12 Boys	0-10m	10-20m	20-45m	30-60m								
U14 Girls	5-15m	10-30m	30-60m	40-75m	40-85m	60-120m	80-180m					
U14 Boys	5-15m	10-30m	30-60m	40-75m	40-85m	60-120m	80-180m	100-210m				
U16 Girls	5-20m	10-40m	50-80m	65-90m	65-100m	100-160m	130-220m	175-300m				
U16Boys	5-20m	10-40m	50-80m	65-90m	65-100m	100-160m	130-220m	175-300m	230-400m			
U18 boys	20-60m	20-60m	60-90m	80-110m	80-120m	120-180m	160-265m	200-350m	300-500m	400-650m	500-850m	
U18 girls	20-60m	20-60m	60-90m	80-110m	80-120m	120-180m	160-265m	200-350m	300-500m	400-650m		
U20 Women	20-60m	20-60m	75-105m	100-135m	100-150m	150-210m	200-315m	250-420m	400-600m	600-800m		
U20 Men	20-60m	20-60m	75-105m	100-135m	100-150m	150-210m	200-315m	250-420m	400-600m	600-800m	800-1200m	
Senior Women	20-60m	20-60m	75-105m	100-135m	100-150m	150-210m	200-315m	250-420m	400-600m	600-800m	800-1200m	
Senior Men	20-60m	20-60m	75-105m	100-135m	100-150m	150-210m	200-315m	250-420m	400-600m	600-800m	800-1200m	1400-2000m
Master Women	20-60m	20-60m	75-105m	100-135m	100-150m	150-210m	200-315m	250-420m	400-600m	600-800m	800-1200m	1400-2000m
Master Men	20-60m	20-60m	75-105m	100-135m	100-150m	150-210m	200-315m	250-420m	400-600m	600-800m	800-1200m	1400-2000m

### 311.2.6 Course width categories

Course widths for particular race formats should follow the following table:

Category	Minimum course width			Used for
	Uphills	Undulated terrain	Downhills	
A	3 m	3 m	3 m	Interval Start C
B	4 m	4 m	4 m	Interval Start F Relay C
C	6 m	6 m	6 m	Mass Start C Skiathlon C part Pursuit C Relay F Sprint C Team sprint C
D	9 m	7.5 m	6 m	Mass Start F Skiathlon F part Pursuit F Sprint F Team sprint F
E	12 m	9 m	6 m	Skiathlon (when both techniques are used on the same course)

- 311.2.6.1 It is possible to use a lower category course for a particular format at COC or FIS level competitions providing it is approved by the TD. The number and level of competitors must be considered.
- 311.2.7 At OWG, WSC, JWSC and WC competitions, the highest point of a cross-country course should not exceed 1800 m.
- 311.2.8 For Continental Cup (COC) courses above 1800 m elevation, the requirements for MC and TC in table 311.2.5 can be reduced by 20%.

*For Canadian competitions:*

*All sites hosting National Championship, Continental Cup and Canada Winter Games competitions must have homologated courses for the open classes.*

*Nordiq Canada will adopt the general philosophy and principles for homologation as set out in Article 311.2.8 and in accordance with the practical interpretations found in the FIS Homologation Guidelines for Inspectors and the Nordiq Canada Homologation Guidelines.*

*The required length for a homologated Cross-Country course should not exceed the official course distance by more than 10% or must not be more than 5% shorter (meaning that a 5 km course should not be longer than 5.5 km or cannot be shorter than 4.75 km).*

- 311.2.9 At OWG, WSC, JWSC/U23 and WC, the minimum lap length for interval start competitions of distances 10 km or longer should be 5 km.

### **311.3 Preparation of the Course**

#### **311.3.1 Pre-Season Preparation**

Rocks, stones, roots, stumps, brush and similar obstacles should be re-moved. The courses must be prepared before the winter so that they can be raced even with very little snow. Sections of the course that have drainage problems must be corrected. The summer preparations should be of a standard which allows for carrying out of competitions with approximately 30 cm of snow. Special attention must be given to downhill sections and the need for banking the curves.

#### **311.3.2 General Preparation for the competition**

- 311.3.2.1 The course should be completely prepared with mechanical equipment. If heavy machines are used, they should follow the original configuration of the ground as much as possible in order to preserve the undulations of the terrain.
- 311.3.2.2 The course must be prepared to the recommended width according to the Homologation Manual and the competition format (see ICR articles section C). The course must be prepared so that competitors can ski and pass unobstructed. On slopes where the courses traverse, they must be wide enough to allow for good preparation.
- 311.3.2.3 The courses and the warmup tracks must be completely prepared before the official training, correctly marked and with the kilometer signs in place. The testing tracks should have the same preparation as the competition course.
- 311.3.2.4 The same conditions must be ensured for all competitors during the competition. If it is snowing or blowing hard, a sufficient number of qualified forerunners and/or especially equipped patrols must be available and utilized in order to maintain constant conditions. An action plan has to be prepared in cooperation with the Jury.

- 311.3.2.5 All use of artificial means in order to improve the glide on the snow are forbidden. In special cases use of chemicals to prevent a soft surface is allowed.

### **311.3.3 Preparation for Classical Technique**

- 311.3.3.1 The number of tracks will be decided by the jury according to the length, the width, the profile of the course to the competition format (see ICR articles section C).
- 311.3.3.2 The tracks should be in general set along the ideal skiing line of the competition course. The track is normally set in the middle of the course except through curves.
- 311.3.3.3 In curves there should only be set track where the skis can glide unrestrained in the set track. Where the curves are too sharp and the speed is considered to be too high for the skier to stay in the track, the track should be removed. In curves the track is to be set close to the fence to avoid the possibility to ski between the track and the edge of the course.
- 311.3.3.4 To decide the proper course preparation and track setting, the best competitors and highest possible speed must be taken into consideration.
- 311.3.3.5 The ski tracks must be prepared so that ski control and gliding are possible without a lateral braking effect by any parts of the bindings. The two tracks should be set 17-30 cm apart, measured from the middle of each track. The depth of the track should be 2-5 cm, even in hard or frozen snow.
- 311.3.3.6 Where two or more tracks are used, they should be a minimum 1.20 meter apart measured from the middle of each pair of tracks.

### **311.3.4 Preparation for Free Technique**

- 311.3.4.1 The course must be well-packed the entire width. The width of the course should be suitable with the competition format (see ICR articles section C)
- 311.3.4.2 The jury determines where and how tracks will be set in the downhill.

### **311.4 Marking the Course**

- 311.4.1 The marking of the course must be so clear that the competitor is never in doubt where the course goes. Hard material course markings and commercial markings should only be placed at the sides of the course.
- 311.4.2 Kilometer signs should mark the accumulated distance skied along the course.
- 311.4.3 Forks and intersections on the course must be clearly marked by visible signage, and fences or V-boards must be placed across unused parts of the course.

### **311.5 Refreshment Stations**

- 311.5.1 The OC must at a minimum provide a refreshment station (in the finish area).
- 311.5.2 The jury decides on positions or limitations on feeding stations on the competition course.

## **311.6 Training and Inspection of the Course**

- 311.6.1 Competitors and team officials should be given the opportunity to train and inspect the course in competition conditions. When possible, the course should be open two days before the competition. The Jury may close the course or limit the use of the course to certain sections or hours.

*For Canadian competitions: Competitors must be given an opportunity to train on and inspect the course in racing condition. In Canadian domestic races, the course must be open at least one day prior to the race. At National Championships, the course must be open at least two days before the race. Only in exceptional circumstances may the TD close the course or limit access to certain sections during certain hours. During official training, the course must be prepared and marked as it will be during the event.*

## **312 The Cross-Country Stadium**

### **312.1 Stadium Area**

- 312.1.1 A Cross-Country stadium has to be prepared with a well-designed start/finish area.
- 312.1.2 The stadium arrangement should provide a functional entity divided and controlled as necessary by gates, fences and marked zones. It must be prepared in such a way that
- the competitors may pass through it several times,
  - competitors, officials, media, service people and spectators may reach their respective areas easily,
  - there is enough space to carry out all competition formats.

### **312.2 Start Zone**

- 312.2.1 The first 50 m will be the start zone. This zone may be separated into corridors and classical tracks may be set. The number, width and length of corridors will be determined by the jury according to the competition formats (see ICR articles section C) and the stadium layout.
- 312.2.2 The starting positions will be set according to the competition formats (see ICR articles section C).

### **312.3 Finish Zone**

- 312.3.1 The last straight 50 to 100 m will be the finish zone. This zone is normally separated into corridors. They must be clearly marked and highly visible but not interfering with the skis. The Corridors should be as long as possible. The number, width and length of corridors will be determined by the jury according to the competition formats (see ICR articles section C) and the stadium layout.



- 312.3.2 The finish line must be clearly marked with a colored line. The width of the finish line is maximum 10 cm.

### **312.4 Exchange zone**

- 312.4.1 In team events, the exchange zone should be sufficiently wide and long, clearly marked and located on flat or smoothly rising ground in the stadium.
- 312.4.2 The size (length and width) should be adapted to the competition formats (see also ICR articles section C) and the available space in the stadium.

### **312.5 Pit boxes**

- 312.5.1 When ski exchange is allowed, the pit box area must be designed so that each competitor has a designated box marked by his/her bib number and an exit is provided that minimizes any chance for interference. A bypass corridor must be provided so that any competitors who do not enter their pit boxes will have the shortest skiing distance past this ski exchange area.

### **312.6 Working Conditions**

- 312.6.1 Competition officials, Jury members, Coaches, media and service people must have proper working zones within the stadium area so that they can work without disturbing the process of start and finish. The access of these persons to the stadium area must be controlled.
- 312.6.2 Timekeeping and calculation should be located in a building with a good view of the start and finish.
- 312.6.3 At OWG, WSC, JWSC, WC and COC competitions, FIS officials and Jury members must be provided a working room with a good view of the stadium, and in the immediate vicinity of the stadium.
- 312.6.4 A heated room must be provided for the medical office near the stadium.

### **312.7 Additional Facilities**

- 312.7.1 In the immediate vicinity of the stadium at OWG, WSC, JWSC and WC a controlled (with fences or manual control) team preparation area with wax cabins and space for wax trucks must be installed. The cabins must be heated and well ventilated using forced air exchangers. Additional rules may apply for OWG, WSC, JWSC, and WC.
- 312.7.2 Toilets and washrooms must be installed for competitors near the stadium. They must be easily reached from the start area.

### **312.8 Current Information Facilities**

- 312.8.1 A notice board showing results, important information from the OC and the Jury, and the air and snow temperature should be located close to the wax cabins and the stadium. The temperatures must be displayed for the following times: two hours

before the start, one hour before the start, one-half hour before the start, at the start, one-half hour after the start, one hour after the start.

- 312.8.2 Temperature measurements must be taken in the stadium area and at places where extreme temperatures (low point, high point) can be expected.
- 312.8.3 Loudspeakers must be used for announcing the competition and important information.
- 312.8.4 In order to inform international competitors, trainers, spectators, English language must be used.

## **313 Official Entries for the Organizer**

### **313.1 Procedure**

- 313.1.1 Official entry forms must be sent by the Organizer to all relevant Nations in an electronic or paper form. An online registration process can also be provided.
- 313.1.2 As a minimum, the required data fields shown in the Official FIS Entry Form must be included.
- 313.1.3 For WC this entry process will be determined by the FIS Cross-Country Committee.

### **313.2 Receiving official entry information for a specific competition**

- 313.2.1 Official entries and grouping information (when required) must be received and checked by the competition secretary latest two hours before the Team Captains' meeting.
- 313.2.2 If grouping will be used to determine the starting order, then the competition secretary will use the order of the written entry to assign the competitors into groups unless other specific instructions are provided.
- 313.2.3 When the starting order will be determined according to the FIS points, the Competition Secretary will be required to compile the current point values for each competitor within the valid points list.

### **313.3 Late Entries**

- 313.3.1 Late entries can be admitted by the Jury before the draw.
- 313.3.2 Late entries are not admitted after the draw.

### **313.4 Substitution**

- 313.4.1 After the draw competitors can only be substituted if they cannot start due to force majeure (injury, illness, etc.,) and if the jury permits the substitution. This has to be certified by a medical doctor and communicated to the jury until 2 hours before the start.

- 313.4.2 In the event of an accident during warming up the Jury can permit a substitution up to the start of the competition if the accident is reported to and certified by the Medical Doctor or Medical Service of the OC.
- 313.4.3 If the withdrawn competitor was selected for doping control then this test must still be carried out and must also be carried out on the substitute competitor. If the withdrawn competitor produces a positive test, no substitute will be allowed.
- 313.4.4 The starting position of the substitute competitor will be according to ICR articles section C “competition formats”
- 313.4.5 Competitors, who are on the starting list and cannot take part in the competition because of illness or other reasons, must be reported by the team captain to the competition secretary at latest 30 min. before the start. If any of these competitors were selected for doping control, they must still be tested.

### 313.5 Grouping

- 313.5.1 If grouping is used to determine the starting order, the Team Captain must distribute his/her competitors evenly within the groups. This must be done latest 2 hours before the draw. If a nation enters more competitors than there are groups, the extra competitors must be distributed among the groups, one per group, at the option of the Team Captain. This rule also holds for teams with fewer competitors than groups.

Example:

Teams:		Groups:			
		I	II	III	IV
Team A	8 entries	2	2	2	2
Team B	6 entries	1	2	1	2
Team C	3 entries	1	-	1	1

- 313.5.2 With 20 competitors or less, use groups I and II; with 21 - 40 competitors, use groups I, II and III; with more than 40 competitors, use all four groups.

*For Canadian competitions: In events where participants do not hold a current National License, these participants will be treated as an additional group above and beyond the number of groups required by the size of the entry. This additional group will be drawn as one group regardless of size*

## 314 Starting Order

### 314.1 Principles

- 314.1.1 The start list can be created with a draw, using a point system, a cup standing, a stage event overall standing, a qualification system or other methods.

### **314.2 Draw**

- 314.2.1 Manual and computer methods are allowed for the draw.
- 314.2.2 The draw is carried out by using a random double selection.
- 314.2.3 If grouping is used, the start numbers will be drawn within each group. The normal starting order of the groups will be I, II, III and IV. The grouping of the competitors cannot be changed during the draw.
- 314.2.4 If a competition has to be postponed to a different date, the draw must be repeated (ICR art. 217.6).
- 314.2.5 It is possible to have the draw conducted before the Team Captains' meeting under the supervision of the Jury.

### **314.3 Manual Draw**

- 314.3.1 In this method, each competitor receives one number from a sequence determined by the number of competitors in their group (for instance, 23 competitors in the group, the competitor is assigned a number between 1 and 23). In the first random selection, one of the numbers 1-23, is drawn. At the same time, a start number that has been assigned to that group is drawn (for example, group II with 23 competitors will race with bibs 45-67 inclusive). This number that is drawn is the start number for the competitor whose number was drawn in the first random selection. For both random selections, balls with the appropriate numbers on them are usually drawn by hand from a closed box or container. After the two balls are drawn, the nameplates of the competitors are transferred from the board with the grouping to the board with the starting order.

### **314.4 Computer Draw**

- 314.4.1 The computer draw procedures must be inspected by a member of the Jury in order to validate the process.
- 314.4.2 This method requires that the names and the grouping of the competitors will be entered into the computer. The program provides at least four stages of output on the monitor.
  - 1. The list with the registered competitors and their sequential numbers within a group appears on the monitor.
  - 2. The computer randomly selects the name of one competitor and displays it on the monitor.
  - 3. The computer randomly selects a start number for this competitor. The start number and the name of the competitor now appear on the monitor.
  - 4. The monitor then shows the start list order with this competitor listed.

### **314.5 Using a Points System to Determine the Starting Order**

- 314.5.1 The starting order can be made on the basis of the FIS Points; overall list, distance list or sprint list.
- 314.5.2 Refer to the Rules and Guidelines of the FIS Points to determine valid lists.

*For Canadian competitions: Grouping will be made according to the Distance or Sprint Canadian Points List (CPL) unless the race organizers specifically state otherwise in the Race Notice.*

### **314.6 Seeded Group**

- 314.6.1 The Seeded Group is an exception and is composed with the best athletes entered in a competition. The seeded group can be determined according to the FIS points, to a current Cup Standing or a current stage event standing.
- 314.6.2 All competitors who are eligible to be in the Seeded Group must start the competition within the Seeded Group.
- 314.6.3 The starting position of the seeded group will be determined for each different competition formats by the jury according to the specific competition rules. As a principle, the seeded group should start with the most advantageous position.

### **314.7 Bibs (Start Numbers)**

- 314.7.1 Design
 

Start numbers must be readable from the back and the front. They must not hinder the competitor in any way. The size, the shape and the method of attachment cannot be changed. The Organizer is responsible for obtaining practical start numbers. Start numbers used in sprints and in competitions with Pursuit Start or Mass Start should also have numbers on both sides under the arms; this is also possible for other competitions

#### **314.7.2 Leg Numbers**

- 314.7.2.1 For Mass Start, Skiathlon, Pursuit, Individual Sprints competitions it is required to affix start numbers to the competitor's leg that is closest to the finish line camera.
- 314.7.2.2 For Team Sprint and Relay competitions it is required to affix start numbers to the finishing competitor's leg that is closest to the finish line camera.

### **314.8 Start List**

- 314.8.1 Start lists must contain the starting order of competitors, their start numbers, years of births, respective FIS points, start time(s), the technical details of the course length, HD, MC, TC, number of participating nations and composition of the jury.

## **315 Start Procedures**

### **315.1 Types of Starts**

- 315.1.1 For competitions on the International Calendar, Interval Start, Mass Start, Pursuit Start, and Heat Start will be used.

### **315.2 Interval Start Procedure**

- 315.2.1 Interval Starts will normally use half-minute intervals and fifteen seconds for sprint qualifying round. The jury may approve shorter or longer intervals.
- 315.2.2 The start command consists of a countdown starting 5 seconds before the start time ("5-4-3-2-1") and start signal ("GO!"). The command can be given verbally or by audible signals.
- 315.2.3 The competitor must have their feet behind the start. The poles must be placed in front of the starting line and/or starting gate.
- 315.2.4 The competitor may start any time between three seconds before and three seconds after the start signal. If he/she starts more than three seconds before the start signal, it is a false start. If he/she starts more than three seconds after the start signal, it is late start and the start list time will count.

*In Canadian events where no start gate is used, the competitor may not start until the start signal has been given.*

- 315.2.5 Competitors who start late must not interfere with the start of others.
- 315.2.6 With both electric and hand-timing, the competitor's actual start time must be noted in case the Jury decides their late start was due to force majeure.
- 315.2.7 Example of start lists for Interval Start can be found at: <http://medias4.fis-ski.com/pdf/2017/CC/2228/2017CC2228SL.pdf>

### **315.3 Mass Start Procedure**

- 315.3.1 The Mass Start should be carried out using angled start lines in shape of an arrow. This means that the athlete with start number 1 has the most favorable start position followed by start number 2 etc. Each competitor should be separated by a fixed distance interval.
- Number one will be in the middle position; even numbers are placed on the right and odd numbers on the left side of the arrow. The numbering mark should be placed to the right or in the middle of the track.
- 315.3.2 The Jury shall decide whether to set classic tracks in the start grid.

- 315.3.3 The starting procedures for a Mass Start will begin two minutes before the start signal. At this time instructions about the start will be given to all competitors assembled in their start lanes. These instructions should end with the competitors being instructed to stand at their start positions and a **“one minute to start warning”** is given. Next there will be the command **“30 seconds to start”**. When all competitors are motionless, then the next sound will be the **start command or signal**.
- 315.3.4 If the start grid is set with classic tracks then competitors must only use classic technique and are not allowed to leave their assigned tracks between their start positions and end of the marked corridors over the first 15-50 meters after the start line.
- 315.3.5 Example of start lists for Mass Start can be found at: <http://medias3.fis-ski.com/pdf/2017/CC/2267/2017CC2267SL.pdf>

### 315.4 Pursuit Start Procedure

- 315.4.1 The starting order and intervals are set according the results of a first competition or a stage event current overall standing. The tenths of seconds will be deleted to establish the start list.

Rank	Name	Country	Final
1	SVENSSON, Lars	SWE	25:12.9
2	ARKJANOW, Nikolai	RUS	25:14.2
3	KRECEK, Jan	CZE	25:21.7

The start list should be prepared according to the following example:

Start number	Name	Country	Start Time
1	SVENSSON, Lars	SWE	0:00
2	ARKJANOW, Nikolai	RUS	0:02
3	KRECEK, Jan	CZE	0:09

- 315.4.2 In order to avoid overlapping or competition taking too long, the Jury may allow a Mass or Heat Start for the late starting competitors. The Jury is also allowed to reduce the number of starting competitors.
- 315.4.3 The Pursuit Start is carried out without an electronic start gate. A video camera should be used to record the entire start such that a review by the Jury can be done.
- 315.4.4 In order to guarantee an exact start, a large display clock must be used for each starting lane together with bib number and starting times for respective competitors for that lane. The start must be prepared so that two or more competitors may start side by side.

315.4.5 The competitors are not allowed to change corridors within the marked corridor area after the start line.

315.4.6 Example of a start list for Pursuit competition can be found at: <http://medias2.fis-ski.com/pdf/2017/CC/3033/2017CC3033SL.pdf>

### **315.5 Heat Start procedure**

315.5.1 The start area is prepared with a start line and a pre-start line that are 1 meter apart.

315.5.2 Electronic and/or mechanical start gates can be used if approved by the jury.

315.5.2.1 Use of start gates are mandatory at OWG, WSC, WC, U23 WSC and JWSC competitions.

315.5.3 Competitors are organized on the pre-start line where instructions are given and start lanes designated. The starter will give the command **“take your start positions”** and the competitors advance to the start line. When all competitors are at the start line the starter will give the command **“Set”** and all competitors must remain motionless until the starter gives the **start signal**.

315.5.4 Starts that do not use gates follow the same principles and procedures as stated above.

315.5.5 Competitors must use classical technique and are not allowed to leave their assigned tracks within the marked corridors over the first 10-15m after the start line.

315.5.6 An example of a start list for Heat Starts can be found at: <http://medias3.fis-ski.com/pdf/2017/CC/2221/2017CC2221SL.pdf>

### **315.6 Duties of the Start Officials**

315.6.1 Start officials must provide all competitors with the opportunity to start at their correct times. An assistant must be placed near the starter and is responsible for recording the details for any violations at the start.

### **315.7 False Start Consequences**

315.7.1 For competitions using Interval Start or Pursuit Start procedures competitors who make a false start will not be recalled to the start line. False start infractions must be reported to the jury.

315.7.2 For all competitions using a Mass Start or Heat Start procedures, any false start will result in a “restart” of the competition. The starter or the start gate must give a false start signal. There must be assistants placed an effective distance down the tracks where it is possible to turn the competitors back.

### **315.8 Marking of Skis**

315.8.1 Ski marking will not be used unless requested in advance by the sanctioning body of the competition. For purposes of control, both skis are marked shortly before the



start. The competitor must come to the official marking place in person and in due time wearing their starting bib.

### 315.9 Temperature

If the temperature is below  $-20^{\circ}\text{C}$ , measured at the coldest point of the course, a competition will be postponed or cancelled by the Jury. With difficult weather conditions (e.g., strong wind, high air humidity, heavy snowfall, or high temperature) the Jury may, in consultation with the Team Captains of the participating teams and the Chief of Medical and Rescue Services responsible for the competition, postpone or cancel the competition.

*For Canadian competitions: With air temperatures below  $-20^{\circ}\text{C}$  (temperature measured at the coldest point of the course and without wind factor) and competition distances less than or equal to 15 km, the Jury must postpone or cancel the competition. With competition distances greater than 15 km and temperature less than  $-18^{\circ}\text{C}$  without wind factor, the Jury must postpone or cancel the competition.*

*For U12 age groups, with air temperatures below  $-15^{\circ}\text{C}$  (temperature measured at the coldest part of the course and without a wind factor), the Jury must postpone or cancel the competition.*

*With any difficult weather conditions (e.g. strong winds, high air humidity, heavy snow, icy track conditions) at any air temperature, the Jury may, on consultation with the Team Leaders of the participating teams and the doctor responsible for the competition, postpone, cancel or shorten the competition.*

## 316 Timing

316.1 For all competitions listed in the FIS Calendar, electronic timekeeping must be used. Electronic timing will always be supplemented by hand-timing as a backup system and the results cross-checked between the two systems.

316.2 If the electronic timing temporarily fails hand times will be used by correcting the average time difference which develops between the electronic timing and the hand-timing. If the electronic timing fails frequently or completely during the competition, the hand times will be used for all the competitors. When hand times are used to calculate results, the actual start times must be used.

316.3 When using hand-timing, the time is taken when the competitor's first foot crosses the finish line.

### 316.4 Electronic Timing

316.4.1 *The following electronic timing technologies can be used to identify the official finish times:*

- Electronic timing system based on photocells. The measuring point of the light or photo barrier must be at a height of 25 cm above the snow surface

- Photo finish system. The measuring point will be the toe of the first boot meeting the finish line.

### **316.4.2 Transponder Timekeeping**

Transponders (active systems) can be used as a supporting system to the official timing system to determine race times and ranking sequences at intermediate timing points, pre-timing points and finish (unofficial results).

The official result must be confirmed by using electronic timing systems in accordance with ICR 316.4.1

- 316.5 In the case of competitors falling as they cross the finish line, the competitors will be assigned their finish time as per articles 316.3 or 316.4 if all the parts of their bodies are moved across the finish line without any outside assistance.
- 316.6 For the calculation of results all start and finish times will be recorded to at least 1/100 (0.01) precision. The calculated net time for each competitor is determined by subtracting the recorded start time from the recorded finish time. The final result for each skier will be determined to 1/10 (0.1) precision by truncating the calculated net time. For example, 38:24.38 becomes 38:24.3.
- 316.7 During the OWG, WSC, JWSC and WC, photo finish cameras must be used.
- 316.8 The finish referee is responsible for keeping a list of the order in which the competitors cross the finish line. They give this list to the chief of timekeeping.
- 316.9 An electronic timing report for every FIS race must be transmitted to FIS.

## **317 Results**

### **317.1 Calculation of Results**

- 317.1.1 The results are calculated by taking the difference between the finish and start times. In a stage event competition, the actual time, bonus seconds and time penalties from each stage are accumulated.
- 317.1.2 The overall standing in a stage competition will be calculated by accumulating:
- the results (actual times) where tenths of seconds are truncated from each stage prior to last stage. The results of the qualification round will be used for sprint competitions.
  - The result (actual times) with the tenths of seconds from the last stage.
  - Bonus seconds and time penalties from each stage

#### **317.1.2.1 Ties in overall standings**

In case of a tie on the current overall standing (standings, published after each stage prior the final stage), the competitors will be ranked according to the highest number of individual wins and then the bests results (i.e. most 2nd places, most 3rd places...).

In case of a tie after the final stage (final overall ranking) the competitors will be ranked:

Stages with Pursuit start or Mass start: according to the finish arrival order of the last competition. If a tie remains, the competitors will have the same ranking on the result list.

Stages with interval start: The competitors will have the same ranking.

- 317.1.3 The ranking of athletes involved in a photo finish will be established according to the order they crossed the vertical plane of the finish line by the toe of the front foot.

## **317.2 Publication of Results**

- 317.2.1 The unofficial result list will be posted on the official notice board as soon as possible after the competition, with the time of its publication noted.

- 317.2.2 The official result list must contain the final order of the competitors, their FIS codes, starting number, times, intermediate times, competition points, skiing technique, the number of competitors, names of the competitors who started but did not finish, any written sanctions to the competitors, the technical details of the course; length, HD, MC, TC, the weather, temperature data, number of competitors (entered, ranked, DNS and DNF), number of participating nations and the composition of the Jury.

Examples can be found on the FIS Website Cross-Country and through the FIS Nordic Office.

- 317.2.3 In countries where the Latin alphabet is not used, information and results should also be given in Latin characters.

- 317.2.4 The competition secretary and the TD sign the official result list and certify that it is correct.

- 317.2.5 All official results must also be electronically transmitted to FIS in XML format.

## **C. COMPETITION FORMATS**

### **321. Interval Start Competitions**

#### **321.1 Definition**

At Interval Start competitions, each competitor starts at his/her designated starting time and final result is determined by difference between finish time and start time.

#### **321.2 Courses and stadium preparation**

- 321.2.1 Recommended Norms

Items	Preparation for	
	Classical technique	Free technique
<b>COURSE</b>		
Category	A	B
Classical tracks	1 or 2 tracks in ideal line	/
Distance between tracks	Minimum 1.2 m	/
<b>START</b>		
Organization/preparation	1 corridor	1 corridor
Classical tracks	1	No
Length of tracks (after start line)	end of start zone	/
Distance between tracks	/	
<b>FINISH</b>		
Width (minimum)	4 m	9 m
Number of corridors	3-4 tracks	3 or 4 corridors (3 m each)
Distance between tracks	Minimum 1.2 m	/

### 321.3 Entries - Substitution

321.3.1 Substitution is possible according to ICR art. 313.4.

321.3.2 The substitute athlete's start position will be determined by the jury.

### 321.4 Starting Order and Start Procedure

321.4.1 Interval Start procedure must be used (see ICR art. 315.2)

321.5 Timing and results

321.5.1 If two or more competitors have the same time, they shall have the same ranking in the result list, and the competitor with the lower starting number will be listed first (ICR art. 219.2).

### 321.6 Jury and protests

No specific rules

## 322. Mass Start Competitions

### 322.1 Definition

At Mass Start competitions, all athletes start at the same time and final results are determined by finish arrival order.

### 322.2 Courses and stadium

#### 322.2.1 Recommended norms

Items	Preparation for	
	Classical technique	Free technique
<b>COURSE</b>		
Category	C	D
Classical tracks	4 tracks	/
Distance between tracks	Minimum 1.2 m	/
<b>START</b>		
Organization/preparation	Arrow start grid	Arrow start grid
Classical tracks	Odd number 3 or more	(Optional) Odd number 3 or more
Length of start corridors (after start line)	30 to 50 m	15 to 30 m
Distance between tracks	Minimum 1.2 m	(Optional) Minimum 1.2 m
<b>FINISH</b>		
Width (minimum)	6m	12 m
Number of corridors	minimum of 3 tracks	3 - 4 corridors (3m each)
Distance between tracks	Minimum 1.2 m	/

322.2.2 There must be no factors along the course that cause congestion.

322.2.3 If ski exchange is allowed, the stadium must be organized in a way that athletes going to exchange skis will ski longer distance comparing to athletes that will not change skis.

322.2.3.1 Pit Box Area

322.2.3.1.1 The course along the access to the boxes should be minimum 4 m wide. The width of the course on the exit side of the boxes should be a minimum of 6 m.

322.2.3.1.2 Only skis can be deposited into the assigned box.

### 322.3 Entries - Substitution

322.3.1 Substitution is possible according to ICR art. 313.4.

322.3.2 The substitute athlete must start in the same position as the substituted athlete if their FIS points are the same or better than those of the replaced athlete. If their FIS points are worse they must start at the end of the field.

322.3.3 The athlete takes the bib of the one they are replacing.

322.3.4 The original start position will be left empty.

### 322.4 Starting Order and Start Procedure

322.4.1 Mass Start procedure must be used (see ICR art. 315.3).

### 322.5 Timing and Results

322.5.1 Overlapping Rules normally apply. For skiers who are lapped refer to ICR art. 343.14.

### 322.6 Jury and protests

No specific rules.

## 323. Skiathlon Competitions

### 323.1 Definition

Skiathlon is a Mass Start competition in which competitors start in classical technique in first part, followed by mandatory ski exchange in a pit box in the stadium and then second part in free technique.

### 323.2 Courses and stadium

323.2.1 Recommended norms

Items	Preparation for	
	Classical technique	Free technique
<b>COURSE</b>		
Category	C or E	D or E

Items	Preparation for	
	Classical technique	Free technique
Classical tracks	4 tracks	/
Distance between tracks	Minimum 1.2 m	/
<b>START</b>		
Organization/preparation	Arrow start grid	/
Classical tracks	Odd number 3 or more	/
Length of tracks (after start line)	50 to 100 m	/
Distance between tracks	1.2 m	/
<b>FINISH</b>		
Width (minimum)	/	12 m minimum
Number of corridors	/	3-4 corridors (3m each)
Distance between tracks	/	/
<b>PIT BOXES</b>		
Recommended size	length 2 m – 2.5 m	width: 1.2 m – 1.5 m

### 323.2.2 Pit Box area

- 323.2.2.1 Within the pit box area there is no technique control
- 323.2.2.2 The width of the course along the access to the boxes should be a minimum of 4m wide. The width of the course on the exit side of the boxes should be a minimum of 6m wide.
- 323.2.2.3 The free technique equipment must be deposited into the assigned box before the Mass Start. Other equipment is not allowed to be deposited in the boxes.
- 323.2.2.4 The exchanged equipment must be left in the box until the competitor has finished the competition.
- 323.2.2.5 5 minutes before the start coaches or service people have to leave the pit box area.

### 323.3 Entries - Substitution

- 323.3.1 Substitution is possible according to ICR art. 313.4
- 323.3.2 The substitute athlete's start position will be determined by the jury, using the same procedure that established the start list. The athlete's start position will be in between the starting positions (lines) of the competitors adjacent to him.

323.3.3 The athlete takes the bib of the one they are replacing.

323.3.4 The original start position will be left empty.

### 323.4 Starting Order and Start Procedure

323.4.1 Mass Start procedure must be used (see ICR art. 315.3).

### 323.5 Timing and results

323.5.1 Overlapping Rules normally apply. For skiers who are lapped refer to ICR art. 343.13.

### 323.6 Jury and protests

No specific rules.

## 324. Pursuit Competitions

### 324.1 Definition

Pursuit competitions are carried out as combined competitions where starting times of athletes are determined by result(s) of previous competition(s) and the final result is determined by finish arrival order of the last competition.

### 324.2 Courses and stadium

324.2.1 Recommended norms

Items	Preparation for	
	Classical technique	Free technique
<b>COURSE</b>		
Category	C	D
Classical tracks	4 tracks	/
Distance between tracks	Minimum 1.2 m	/
<b>START</b>		
Organization/preparation	2 – 5 corridors	2 – 5 corridors
Classical tracks	1 per corridor	
Length of start corridors (after start line)	End of start zone	10 m



Distance between tracks	3 m	(Optional) 3 m
<b>FINISH</b>		
Width (minimum)	6 m minimum	12 m minimum
Number of corridors	3-4 tracks	3-4 corridors (3m each)
Distance between tracks	Minimum 1.2 m	/

### 324.3 Entries – Substitution

324.3.1 Substitution according to ICR art. 313.4 is only possible before the first competition.

### 324.4 Starting Order and Start Procedure

324.4.1 Pursuit Start procedure must be used (see ICR art. 315.4).

### 324.5 Timing and Results

324.5.1 The calculation of the final times in a pursuit competition will be done by combining the results (actual skiing time) in the previous race without the tenths of a second with the final results of the second race with the tenths of a second. For competitions that use the Pursuit Start method the order of finish determines the final ranking.

The result list should contain times of previous race(s) (without tenths of seconds), actual racing times of the pursuit competition (with tenths of seconds) and total time (with tenths of seconds).

#### EXAMPLE

Rank	Bib	FIS Code	Athlete	NSA	Year	Time prev. race(s)	Rank prev. race	Time (total)	Diff. time	FIS Points time	Rank FIS points	FIS points
1	99	3190353	CHAUVIN Valentin	FRA	1995	39:52	7	1:19:02.9		39:11.9	(1)	26.54
2	94	3190358	TIBERGHIE Jean	FRA	1995	39:12	2	1:19:03.4	+0.5	39:52.4	(4)	47.20
3	93	3190529	LAPALUS Hugo	FRA	1998	39:10	1	1:19:12.8	+45.2	40:03.8	(7)	53.02

Fig: Example for Individual race

324.5.2 The fastest competitor of the day results must be also be calculated and published as real race time on the distance of the pursuit competition only.

324.5.3 Overlapping Rules normally apply. For skiers who are lapped refer to ICR art. 343.14.

### 324.6 Jury and protests

No specific rules.

## 325. Individual Sprint Competitions

### 325.1 Definition

Individual sprint competitions begin with a qualification round, organized as an Interval Start competition. After the qualification, qualified athletes compete in the sprint finals using elimination rounds (sprint heats).

### 325.2 Courses and stadium

#### 325.2.1 Recommended Norms

Items	Preparation for	
	Classical technique	Free technique
<b>COURSE</b>		
Category	C	D
Classical tracks	4 tracks	/
Distance between tracks	Minimum 1.2m	/
<b>START</b>		
Organization/preparation	Extra corridor for qualification round, 6 corridors / gates for sprint heats	Extra corridor for qualification round with no track, 6 corridors / gates for sprint heats
Classical tracks	1 per corridor	1 per corridor
Length of tracks (after start line)	End of start zone	15 m
Distance between tracks	1.8 m	1.8 m minimum
<b>FINISH</b>		
Width (minimum)	6 m minimum	12 m minimum
Number of corridors	3 minimum	3-4 corridors (3m each)
Distance between tracks	Minimum 1.2 m	/

325.2.2 The course used for the qualification round and the course used for the Finals Heats should be the same.

325.2.3 Sections of the course must be designed straight, wide and long enough to make overtaking possible.

### 325.3 Entries – Substitution

325.3.1 Substitution is possible before qualification according to ICR art. 313.4

325.3.2 The substitute athlete's start position will be determined by the jury.

### 325.4 Starting Order and Start Procedure

325.4.1 Qualification

325.4.1.1 Interval Start procedure must be used (see ICR art. 315.2). Start intervals can be 10, 15, 20 or 30 seconds.

325.4.1.2 If two laps are used an interval block start can be used.

325.4.2 Finals Heats (Quarterfinals, Semi-finals, and Finals)

325.4.2.1 Heat Start procedure must be used (see ICR art. 315.5)

325.4.2.2 In OWG, WSC, WC heats will include quarterfinals, semi-finals and the A-Final. In other competitions the heats will be decided by the organizer including the addition of a B-Final.

325.4.2.3 The starting positions are chosen by the athletes according to the following order:

- Quarterfinals – qualification times (rankings) are used
- Semi-finals – rankings from the Quarterfinals and qualification times are used
- Finals - rankings from the Semi-finals and qualification times are used.

325.4.2.4 The assignment of competitors to quarterfinal heats is determined from the finish rankings in the qualification round. Positions in subsequent heats are also assigned based on rankings or times in the previous round of heats. The table below illustrates the principle of allocating the competitors to their heats when the heats are not timed.

325.4.2.5 Table A: quarter finals with 6 competitors in 5 heats

TABLE A Quarter Finals with 6 competitors in 5 Heats, maximum 30 advance					
Assigned to heats	Q1	Q2	Q3	Q4	Q5
Distribution 1 – 20	1	4	5	2	3
	10	7	6	9	8
	11	14	15	12	13
	20	17	16	19	18

Distribution 21 – 25	21	24	25	22	23
Distribution 26 – 30	30	27	26	29	28

Semi Finals (12)		Finals (6 + 6)	
S1	S2	B Final	A Final
Q1 #1	Q4 #1	S1 #4	S1 #1
Q1 #2	Q4 #2	S2 #4	S2 #1
Q2 #1	Q5 #1	S1 #5	S1 #2
Q2 #2	Q5 #2	S2 #5	S2 #2
Q3 #1	Q3 #2	S1 #6	S1 #3
R3-2*	R3-1*	S2 #6	S2 #3

*\*In competitions when the heats are not timed, the 6th positions in the semi-final heats are assigned from the 3rd ranked competitors in all the quarter final heats. The 3rd ranked competitor with the fastest qualifying time (Q R3-1) is assigned to the second semi-final heat S2 and the 3rd ranked competitor with the second best qualifying time (Q R3-2) is assigned to semi-final heat #1.*

#### 325.4.2.6 Or using Table B: quarter Finals using 4 heats

TABLE B Quarter Finals using 4 Heats, maximum 24 advance				
Assigned to heats	Q1	Q2	Q3	Q4
Distribution 1 – 16	1	4	2	3
	8	5	7	6
	9	12	10	11
	16	13	15	14
Extended Distribution 17 – 20	17	20	18	19
Extended Distribution 21 – 24	24	21	23	22

Semi Finals (8)	Finals (4 + 4)
-----------------	----------------

S1	S2	B Final	A Final
Q1 #1	Q3 #1	S1 #3	S1 #1
Q1 #2	Q3 #2	S1 #4	S1 #2
Q2 #1	Q4 #1	S2 #3	S2 #1
Q2 #2	Q4 #2	S2 #4	S2 #2

325.4.2.7 For OWG, WSC, JWSC and WC the heats must be timed and the assignment of competitors into the semi-final heats and the A-Final is according to the following principles:

For the 6th positions in the semi-final heats the next two fastest competitors from the quarterfinal heats who are ranked 3rd or 4th will be advanced. The fastest will be assigned to S2 and the next fastest to S1. For the A-Final the 1st & 2nd ranked competitor from each Semi-final heat are assigned to the A-Final plus the next 2 fastest competitors from either Semi-final heat who are ranked 3rd or 4th will also be assigned to the A-final, all other Semi-finalists are assigned to the B-Final.

In case of equal times in the heats for positions 5 and 6 (lucky losers), their qualification times will apply. If the tie still remains current sprint FIS points will apply; if a tie still remains, then the positions are determined by a draw.

325.4.2.8 In sprint competitions with less than 20 competitors in the Qualification Round the jury can decide to use a reduced version of Table A or they can assign competitors directly into the Semi-finals or the A-Final when the number of entries is very low.

325.4.2.9 Any competitor who causes a false start will be sanctioned by a written reprimand. Following the first false start in a heat, any competitor who causes a second false start in the same heat will be required to withdraw from the competition. The competitor will be ranked as the last position of the applicable final, semi-final or quarter-final round (rank 6, 12, 30 or 4, 8, 16).

## 325.5 Timing and results

### 325.5.1 Timing

325.5.1.1 For OWG, WSC, JWSC and WC sprint qualifying round, start and finish times are recorded to 1/1000 precision and the final result is determined to 1/100 precision. For other FIS sprint competitions, it is possible to use timing equipment that only has 1/100 precision but still the final results report the hundredths of a second.

325.5.1.2 For OWG, WSC, JWSC and WC sprint heats, start and finish times are recorded to 1/1000 precision and the final result is determined to 1/1000 precision. For other FIS sprint competitions, it is possible to use timing equipment that only has 1/100 precision.

### 325.5.2 Qualification

- 325.5.2.1 In case of equal qualification times, the competitors who will be advancing to the quarterfinals will be ranked according to their FIS sprint points. If a tie remains, the positions are determined by a draw. The tie in qualification results will not change maximum number of qualified competitors (30 / 24 / 16). Competitors with the same qualification time who did not advance to the quarterfinals will have the same ranking on this result list.
- 325.5.3 Final heats
- 325.5.3.1 Competitors with the same rank in the quarterfinals or semi-finals (if there is no B-final) who do not reach the next round are ranked according their qualification times in the final results.
- 325.5.3.2 In sprint competitions with 30 competitors to the quarterfinal the result list will be made as follows:
- |                        |  |
|------------------------|--|
| 31st to last rank,     | the results from the qualification round will be used  |
| 26th – 30th rank,      | the 6th place finisher from each heat in the quarter-final will be assigned based their re-spec-tive ranking in the qualifying round   |
| 21st – 25th rank,      | the 5th place finisher from each heat in the quarterfinal will be assigned based their respective ranking in the qualifying round  |
| 16th/17th - 20th rank, | the 4th place finisher from each heat in the quarterfinal will be assigned based their re-spective ranking in the qualifying round (Exception, if one of those 4th place finishers will advance to the semi final) |
| 13th – 15th/16th rank, | the 3rd place finisher from each heat in the quarterfinal, who did not advance to the semi-finals will be assigned based their respective ranking in the qualifying round  |
| 7th – 12th rank,       | based on the order of finish in the B final in case of no B Final, the athletes are ranked according their ranking in semi-final and their qualification round   |
| 1st – 6th rank,        | based on the order of finish in the A final  |
- 325.5.3.3 In sprint competitions with 16 competitors to the quarterfinal the result list will be made as follows:
- |                   |   |
|-------------------|---|
| 17th to last rank | the results from the qualification round will be used   |
| 13th – 16th rank  | the 4th place finisher from each heat in the quarterfinal will be assigned based their respective ranking in the qualifying round |

9th – 12th rank                      the 3rd place finisher from each heat in the quarterfinal will be assigned based their respective ranking in the qualifying round

5th – 8th rank                      based on the order of finish in the B final. In case of no B Final, the athletes are ranked according to their ranking in semi-final and their qualification round

1st – 4th rank                      based on the order of finish in the A final

With a different number of competitors in the sprint finals the same principles apply.

325.5.3.4    In case of a tie (“dead heat”) in quarterfinals or semi-finals, the competitor with the better qualification time is ranked ahead. If there is a tie in the A or B finals the competitors are ranked on the same place in the final results.

325.5.3.5    If the competitor does not start or ski the entire course in each heat the competitor will be ranked in the last position of these finals, semi-finals or quarterfinals (rank 6, 12, 30 or 4, 8, 16).

## 325.6    Jury and Protest

325.6.1    In sprint heats at OWG, WSC, JWSC, and WC the unanimous decision of minimum two jury members (including TD) equates to a jury decision.

325.6.2    Due to the timeline pressure of running successive heats it is not possible to allow protests during quarterfinals and semi-finals. Protests will only be accepted after the finals.

325.6.3    During quarter- and semi-finals, ICR art. 224.7 does not apply.

## 326    Team Sprint Competitions

### 326.1    Definition

Team Sprints are competitions carried out as relays with 2 athletes who alternately ski between 3 – 6 legs each. The numbers and distances of the legs have to be published in the official invitation.

### 326.2    Course and Stadium for Team Sprints

326.2.1    Recommended Norms

Items	Preparation for	
	Classical technique	Free technique
<b>COURSE</b>		
Category	C	D

Classical tracks	4 tracks	/
Distance between tracks	Minimum 1.2 m	/
<b>START</b>		
Organization/preparation	Arrow start grid	Arrow start grid
Classical tracks	Odd number 3 or more	(Optional) Odd number 3 or more
Length of tracks	End of start zone	(Optional) 15 m
Distance between tracks	1.2 m	(Optional) 1.2 m
<b>FINISH</b>		
Width (minimum)	6 m	12 m
Number of corridors	3 tracks minimum	3-4 corridors (3m each)
Distance between tracks	Minimum 1.2 m	/
<b>EXCHANGE ZONE</b>		
Minimum Length	45 m	45 m
Minimum Width	9 m	15 m

326.2.2 Sections of the course must be designed straight, wide and long enough to make overtaking possible.

326.2.3 During the team sprint heats, no waxing of skis is allowed.

### 326.3 Entries – Substitution

326.3.1 The names of the competitors actually competing and their starting order must be delivered to the organizer latest 2 hours before the Team Captains' Meeting.

326.3.2 Substitution is possible according to ICR art. 313.4.

326.3.3 The substitute athlete must start in the same Team position as the substituted athlete. The Team's starting order cannot be changed.

326.3.4 In case of substitution, the Team will lose its starting position and will have to start at the end of the field. The start order at the end of the field will be the same as the original starting order. The original start positions will be left empty.

### 326.4 Starting Order and Start Procedure

326.4.1 Mass Start procedure must be used (see ICR art. 315.3).

326.4.2 Normally 2 semi-finals will be used to select the teams for the final in a Team Sprint competition. The teams should be evenly distributed among two groups using the following principle:

- Best team by total points will be assigned to group A



- Remaining teams will be assigned in subsequent pairs by ranking (example team 2 and 3, team 4 and 5, etc) to alternating groups.

326.4.2.1 The better points of distance and sprint FIS points of competitors will be used. In case the entered competitor does not have FIS points, 999 points will be used for calculation.

326.4.2.2 If there are more than 40 teams entered, the Jury may decide to use 3 semi-finals and distribute the teams according to the following principle:

A	1	6	7	12	13	18	19	24	25	30	31	36	37	42	43	etc
B	2	5	8	11	14	17	20	23	26	29	32	35	38	41	44	
C	3	4	9	10	15	16	21	22	27	28	33	34	39	40	45	

326.4.3 The number of teams in one semi-final heat should not exceed 20 and the number of teams in the final should not exceed 15.

326.4.4 The assignment of groups to the semi-finals will be determined by draw.

326.4.5 Start position for the semi-finals: the team with lowest total points using either sprint or distance FIS points of the relay team members will start as number one. The team with the second lowest total points will start as number two and so on. In the case of more teams having equal total points, the team with the lowest point-holder starts ahead of the other. If this is not sufficient to determine the starting position, then starting position is drawn by lot.

326.4.6 The advancement of teams from the semi-final heats to the finals is done according to the following principles:

In case of 2 semi-final heats:

- If the semi-final heats are not timed, the top 5 teams from each of the 2 semi-final heats will advance.
- When the heats are timed, then the top 2 teams from each heat will advance and the next 6 fastest teams from the 3rd-8th ranked teams will advance. In case of a tie, the teams will be ranked according to their team total points. If a tie still remains, then the positions are determined by a draw.
- In case of three or more semi-final heats, up to 15 teams can advance to the finals using the same principles as above (2 teams from each heat plus next 9 fastest times when heats are timed or same number of teams by ranking from each heat when heats are not timed).

326.4.7 The start position for the finals will be according to the results from the semi-finals (rankings followed by times).

- 326.4.8 Separate colours shall be used for the start numbers for each relay leg. For OWG, WSC and WC competitions they will be: 1st leg=red; 2nd leg=blue.

### **326.5 Timing and results**

- 326.5.1 For OWG, WSC, JWSC and WC Team Sprint semi-finals and finals, start and finish times are recorded to 1/1000 precision and the final result is determined to 1/100 precision. For other FIS sprint competitions, it is possible to use timing equipment that only has 1/100 precision but still the final results report the hundredths of a second.

- 326.5.2 Overlapping Rules normally apply. For skiers who are lapped refer to ICR art. 343.14

- 326.5.3 The final results will be published according to the following:

All teams in the final will be placed in the results list according to their rank in the final. When semi-final heats are used the teams who do not advance to the final round will be placed on the results list so that each team with the same rank in their heat will be given a ranking for the next available rank on the result list. As an example, if 5 teams from two semi-final heats advance to the final then the teams ranked 6th in each heat will be given the rank of 11th and 12th according to their time in their respective semi-final heats, the teams ranked 7th in each heat will be given a rank of 13th and 14th etc. in the final results.

If the heats are not timed, then the ranking of the teams in the semi-finals and the FIS points of the teams that did not qualify are used to determine the final ranking for these teams.

### **326.6 Jury and Protest**

- 326.6.1 In Team Sprints at OWG, WSC, WJSC and WC the unanimous decision of minimum two jury members (including TD) equates to the jury decision.
- 326.6.2 Due to the timeline pressure of running successive heats it is not possible to allow protests during the semi-finals. Protests will only be accepted after the finals.
- 326.6.3 During Team Sprints, ICR art. 224.7 does not apply.

## **327 Relay Competitions**

### **327.1 Definition**

- 327.1.1 The relay team consists of three or four competitors, according to the invitation, of whom each may run only one leg. At OWG, WSC, JWSC and WC competitions, a Relay consists of four competitors.
- 327.1.2 In OWG, WSC and JWSC the first two legs will be raced using the classical technique on a classical course and the second two legs using free technique on a free technique course.

## 327.2 Course and Stadium for Relays

### 327.2.1 Recommended norms

Items	Preparation for	
	Classical technique	Free technique
<b>COURSE</b>		
Category	B	C
Classical tracks	2 tracks	/
Distance between tracks	Minimum 1.2 m	/
<b>START</b>		
Organization/preparation	Arrow start grid	Arrow start grid
Classical tracks	Odd number 3 or more	(Optional) Odd number 3 or more
Length of tracks	End of start zone	(Optional) 15 m
Distance between tracks	1.2 m	(Optional) 1.2 m
<b>FINISH</b>		
Width (minimum)	6 m	12 m
Number of corridors	3 tracks minimum	3-4 corridors (3 m each)
Distance between tracks	Minimum 1.2m	/
<b>EXCHANGE ZONE</b>		
Minimum length	30 m	30 m
Minimum width	9 m	9 m

327.2.2 The length of the first relay leg can deviate +/- 5% from the other legs, according to the stadium layout.

## 327.3 Entries - Substitution

327.3.1 The names of the competitors actually competing and their starting order must be delivered to the organizer latest 2 hours before the Team Captains' Meeting.

327.3.2 Substitution is possible according to ICR art. 313.4.

327.3.3 The starting order cannot be changed by substitution.

327.3.4 The Team starting position on the start grid will remain the same.

## 327.4 Starting Order and Start Procedure

327.4.1 Mass Start procedure must be used (see ICR art. 315.3).

- 327.4.2 Start numbers will normally be drawn. At OWG, WSC and JWSC the placing in the previous OWG, WSC or JWSC will determine the starting order. At WC, placing in the current Nation's Cup will decide the starting order. Teams which do not appear in those results will be drawn after those that did. This method can also be used at other competitions.
- 327.4.3 When each nation can enter more than one official team, the first team for each nation must be placed on the start grid before the second teams and likewise for the third teams etc. Unofficial teams should have the least favorable starting positions.
- 327.4.4 Colors: Separate colors shall be used for the start numbers for each relay leg. For OWG, WSC and WC competitions they will be: 1st leg=red; 2nd leg=green; 3rd leg=yellow and 4th leg=blue.

### **327.5 Timing and Results**

- 327.5.1 Intermediate times for the individual legs of the course are taken when the competitor crosses the line for the intermediate timing. This is also the starting time for the next competitor.
- 327.5.2 The total time of a relay team is the time which elapses between the start and team's final competitor crossing the finish line. The order in which the competitors finish the last relay leg determines the result list.
- 327.5.3 Overlapping Rules normally apply. For skiers who are lapped refer to ICR art. 343.14

### **327.6 Jury and Protest**

No specific rules.

## **D. THE COMPETITION AND THE COMPETITORS**

### **341 Requirements of the Competitors**

#### **341.1 Age Categories**

- 341.1.1 The FIS competition year (or season) is July 1st - June 30th of the following year.
- 341.1.2 Seniors (women and men) must be at least 21 years old during the calendar year (01.01.-31.12.). The right to start begins with the beginning of the competition season (e.g. for 2020 from 1st July 2019 onwards).
- 341.1.3 *Junior women and junior men must be no older than 20 during the calendar year (01.01.-31.12.) in which the season ends.*

### **Nordic Junior World Ski Championships**

Competitors must have reached their 16th birthday before the end of the calendar year (1st January – 31st December) in which the season ends.

<b>Season</b>	<b>AGE</b>	<b>Years of Birth</b>
2020/21	16-20	2001, 2002, 2003, 2004, 2005
2021/22	16-20	2002, 2003, 2004, 2005, 2006
2022/23	16-20	2003, 2004, 2005, 2006, 2007
2023/24	16-20	2004, 2005, 2006, 2007, 2008

### **U23 World Ski Championships Cross-Country**

U23 women and U23 men must be no older than 23 during the calendar year (01.01.-31.12.) in which the season ends. Years of birth for U23 from 2020/21 on:

<b>Season</b>	<b>AGE</b>	<b>Years of Birth</b>
2020/21	21-23	1998, 1999, 2000
2021/22	21-23	1999, 2000, 2001
2022/23	21-23	2000, 2001, 2002
2023/24	21-23	2001, 2002, 2003

- 341.1.4 Junior women and junior men should normally start in their own classes. They may start in the respective ladies or men classes, including the general classes at long distance popular competitions.
- 341.1.5 At all FIS competitions competitors must have reached their 16th birthday before the end of the calendar year (1st January – 31st December) in which the season ends.
- In season 2020/21, competitors born 2005 and earlier
  - In season 2021/22, competitors born 2006 and earlier
  - In season 2022/23, competitors born 2007 and earlier
  - In season 2023/24, competitors born 2008 and earlier

# Official Age Categories for Canadian Competitions - updated Oct 2020

		<b>2019-2020 Comp Season</b>	<b>2020-2021 Comp Season</b>	<b>2021-2022 Comp Season</b>
Category				
U8 girls		2012-2013	2013-2014	2014-2015
U10 girls		2010-2011	2011-2012	2012-2013
U12 girls		2008-2009	2009-2010	2010-2011
U14 girls		2006-2007	2007-2008	2008-2009
U16 girls		2004-2005	2005-2006	2006-2007
U18 girls		2002-2003	2003-2004	2004-2005
U20 Women		2000-2001	2001-2002	2002-2003
Open	U23	1997-1999	1998-2000	2000-2001
	Senior	1999 & earlier	2000 & earlier	2001 & earlier
Master women	31 and older	1989 & earlier	1990 & earlier	1991 & earlier
U8 boys		2012-2013	2013-2014	2014-2015
U10 boys		2010-2011	2011-2012	2012-2013
U12 boys		2008-2009	2009-2010	2010-2011
U14 boys		2006-2007	2007-2008	2008-2009
U16 boys		2004-2005	2005-2006	2006-2007
U18 boys		2002-2003	2003-2004	2004-2005
U20 men		2000-2001	2001-2002	2002-2003
Open men	U23	1997-1999	1998-2000	2000-2001
	Senior men	1999 & earlier	2000 & earlier	2001 & earlier
Master men	31 and older	1989 & earlier	1990 & earlier	1991 & earlier

Note: In most races the OC should treat U23 skiers as Open Men or Open Women

## **341.2 FIS Points System**

- 341.2.1 The FIS Points are used particularly for establishing the qualification for OWG, WSC and World Cup competitions, grouping and start list creation (see: World Cup rules and Rules and Guidelines of the FIS Points available on the FIS Website).

## **342 Medical Examinations**

### **342.1 State of Health**

- 342.1.1 The National Associations are responsible for the health of the competitors they enter. The competition doctor will only carry out a medical examination at the request of the competitor's Team Captain, competitor or the representative of the FIS Medical Committee (see ICR art. 221).

## **343 Responsibilities of the competitors**

- 343.1 In all training and competition situations the athlete must act with due care taking into account the course conditions, visibility and competitor congestion.
- 343.2 In all training and competition situations the athletes must always ski in the competition course direction.
- 343.3 Competitors must follow the special instructions (course opening times, wearing special bibs, training, ski testing, ...) issued by the Jury or OC in order to ensure order on the course, in the stadium and in the team preparation area before, during and after the competition.
- 343.4 The competitor is responsible for arriving at the start and starting at the correct time.
- 343.5 Competitors must wear/use all the means of identification (bibs, leg bibs, transponders, GPS...) provided by the organizer.
- 343.6 Competitors must follow the marked course in correct sequence from start to finish and must pass all control points.
- 343.6.1 If competitors ski on a wrong section or leaves the marked course, the competitor should return to the point where the error was made. In order to do so, the competitor may have to ski against the correct ski direction and shall be totally responsible for ensuring that there is no obstruction and that other competitors are not endangered.
- 343.7 Competitors have to cover the whole distance on their skis using only their own means of propulsion. Help from outside pacemakers is not allowed.
- 343.8 In classical technique competitions, the competitors must use classical technique only.
- 343.8.1 In Interval Start competitions and Sprint qualification any violation of classical technique (for example skating strides to maintain or increase the speed) will be

considered to affect the results (due to improved time and better FIS points caused by the skating), and the jury will apply the appropriate sanction regardless of the time difference between skiers, even for a winning athlete.

- 343.8.2 In classical technique competitions, the maximum pole length must not exceed 83% of the competitor's body height. In free technique competitions, the maximum pole length must not exceed 100% of the competitor's height. The body height is measured with ski boots on from a flat surface, to the top of the uncovered head.

The pole length is measured from the bottom of the pole to the highest attachment of the strap.

All measurements will be rounded to the nearest centimeter as follows: less than 0.5 cm will be rounded down and 0.5 cm and above will be rounded up.

Body height	Pole length	Body height	Pole length	Body height	Pole length	Body height	Pole length	Body height	Pole length	Body height	Pole length
200	166,00	190	158,00	180	149,00	170	141,00	160	133,00	150	125,00
199	165,00	189	157,00	179	149,00	169	140,00	159	132,00	149	124,00
198	164,00	188	156,00	178	148,00	168	139,00	158	131,00	148	123,00
197	164,00	187	155,00	177	147,00	167	139,00	157	130,00	147	122,00
196	163,00	186	154,00	176	146,00	166	138,00	156	129,00	146	121,00
195	162,00	185	154,00	175	145,00	165	137,00	155	129,00	145	120,00
194	161,00	184	153,00	174	144,00	164	136,00	154	128,00	144	120,00
193	160,00	183	152,00	173	144,00	163	135,00	153	127,00	143	119,00
192	159,00	182	151,00	172	143,00	162	134,00	152	126,00	142	118,00
191	159,00	181	150,00	171	142,00	161	134,00	151	125,00	141	117,00

- 343.9 In all competitions obstruction is not allowed. This behavior is defined as deliberately impeding, blocking, charging or pushing any competitor with any part of the body or ski equipment.

### 343.10 Overtaking

- 343.10.1 During an Interval Start competition, competitors who are being overtaken must give way on the first demand.

This applies in classical technique courses even when there are two tracks and in free technique courses when the skier being overtaken may have to restrict his/her skating action.

*In Canadian Competitions:*

*343.10.1 also applies to lapped skiers in Mass Start competitions.*



- 343.10.2 For all other competition, when overtaking occurs, competitors must not cause any obstruction.

The responsibility for a correct passing without obstruction is on the overtaking skier. The overtaking skier must have his/her skis in front of the skis of the overtaken skier before skiing his/her best line.

- 343.11 In sections with marked corridors, the competitors should choose a corridor. Competitors are allowed to leave the chosen corridor as long as the ICR 343.9 is upheld.

### **343.12 Equipment exchange**

- 343.12.1 In all competitions pole exchange is only allowed in the case that a pole is broken or damaged. In classical technique competitions, if both poles are exchanged, they must comply with ICR 343.8.1.

It is however permitted to exchange poles in equipment pit boxes during ski exchange in Skiathlon competitions.

- 343.12.2 Skis may be changed only if:

- The skis or bindings are broken or damaged. The equipment failure must be proven to the Jury after the competition.
- Equipment exchange boxes (Pit boxes, team boxes in Team Sprints) are in place at the competition.

- 343.12.3 In the case of any ski exchange, the competitor must do it outside of the track without help from any other person.

- 343.12.4 When ski exchange boxes (pit boxes) are provided for long distance or Skiathlon competitions, the competitor is permitted to change skis inside the pit box. All equipment exchanges must be done by the competitor within the assigned box without any assistance. The number of ski exchanges is limited to maximum 1 time. The replacement skis must be placed in exchange box before the competition

- 343.12.5 When ski exchange boxes (pit boxes) are provided, overtaking along the access corridors to the boxes is only allowed on the side that is farthest from the boxes.

- 343.12.6 Waxing, scraping or cleaning of the competitor's skis during the competition is forbidden. Exception: In classical technique competitions competitors may scrape their skis to remove snow and ice and add wax if necessary. Competitors may only be handed tools or materials and must do this outside of the track without help from any other person. It is not allowed to place branches, tools or materials on or adjacent to the groomed course.

### **343.13 Relay exchange**

- 343.13.1 In a team event, the exchange is achieved by the arriving competitor, with a tap of the hand on any part of the next competitor's body while both competitors are in the

relay exchange zone. The next competitor may only enter the relay exchange zone when summoned. Any method of pushing the starting competitor is forbidden.

### **343.14 Overlapping**

- 343.14.1 In Pursuit competitions, Skiathlon, Mass Start, Team Sprint and Relay competitions, competitors or teams, who are lapped or instructed by competition officials to stop the competition, must abandon the competition. The competitors or teams who are stopped will be ranked in the final results (no time) according to their ranking at their last intermediate timing point.

*For all Nordiq Canada sanctioned competitions this rule does not normally apply unless specifically stated in the Technical Package or Race Notice. In exceptional circumstance the Jury may choose to invoke this requirement.*

- 343.14.2 ICR art. 343.14.1 must be applied for OWG, WSC and WC.
- 343.14.3 For all other FIS competition the jury decides if ICR art. 343.13.1 applies.
- 343.15 Communication devices that support wireless communication between coaches and athletes or between athletes are not allowed during competition.
- 343.16 The competitors must comply with the instructions of competition officials.
- 343.17 The competitor must comply with all aspects of the medical code (see ICR art. 221).

*For Canadian competitions:*

*Any competitor withdrawing from the competition due to an accident or for any other reason must be reported to the officials at the Finish Line and the bib returned.*

## **344 Responsibilities of Officials and Others**

- 344.1 If required, the Jury will issue special regulations for officials, media and service people and any other non-competitors, to ensure order on the course, in the stadium and in the team preparation area before, during and after the competition.
- 344.2 For order and control on the courses the following principles apply:
- from 5 minutes before the start until the time the course closers have passed, all officials, coaches, non-competitors and other accredited persons, are not permitted to ski on the course. During the competition, these persons must take fixed locations beside the course and must stand without skis on.

- while giving intermediate times and information to competitors, officials, coaches and others are not allowed to run more than 30 meters beside the competitors
  - while doing this work officials and others have to ensure not to obstruct competitors
  - while giving refreshments to the competitors the coaches must ensure not to obstruct competitors and must maintain a fixed position.
- 344.3 In order to obtain clean TV coverage and for safety reasons parts of the competition course may be closed for all but the competitors taking part in the competition. The Jury can allow ski testing and warming up by competitors on parts of the competition course before and during the competition. Athletes and service personnel, wearing special bibs may be allowed to ski on these parts of the competition course.
- 344.4 Wax testing and warming up on the ski competition course must always be done in the competition course direction. Anyone testing skis on the competition course must consider the safety of others on the course and the course preparation. Electronic timing devices used for testing skis will not be allowed on the course during the competition or official training.

## **E. NOT PERMITTED TO START, SANCTIONS**

### **351 Not Permitted to Start**

Competitors will not be permitted to start in any FIS International Ski competition who:

- 351.1 wears obscene names and/or symbols on clothing and equipment (ICR art. 206.7) or behaves in an unsportsmanlike manner in the start area (ICR art. 205.5)
- 351.2 violates the FIS rules in regard to equipment (ICR art. 222) and commercial markings (ICR art. 207)
- 351.3 refuses to undertake a FIS required medical examination (ICR art. 221.2)
- 351.4 If competitors have actually started in a competition and is later determined by the Jury to have been in violation of these rules the Jury must sanction the competitor.

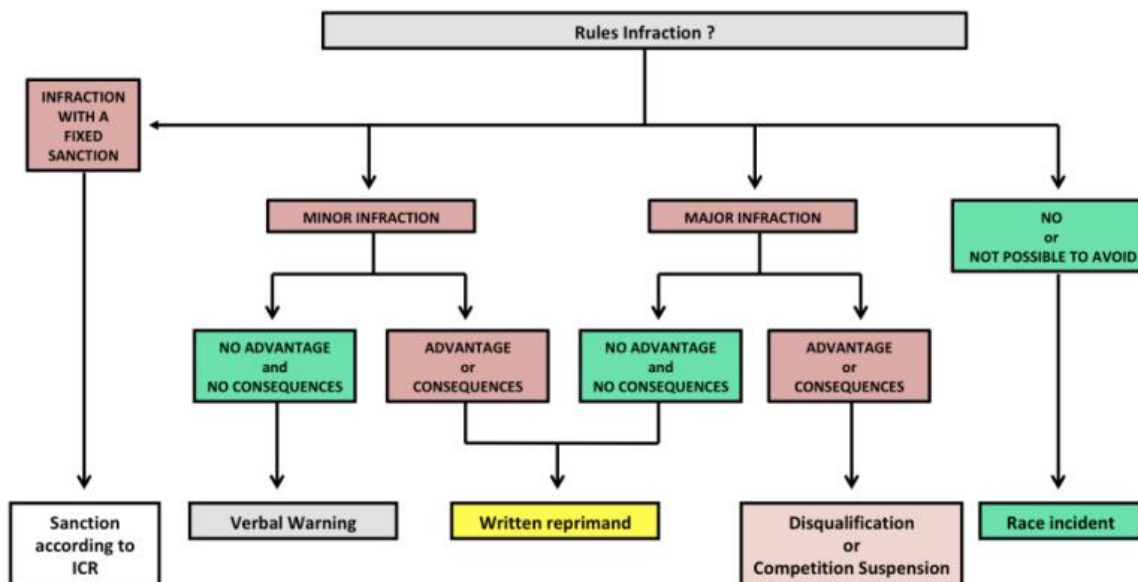
### **352 Sanctions**

#### **352.1 Procedure**

- 352.1.1 When an infraction to the rules occurs, the jury must meet and decide the appropriate sanction by taking into consideration:
  - the specific circumstances
  - the gain or advantage for the offender (see ICR art. 223.3.3)

- the negative impact on other competitors
- the impact on the final result or intermediate results (sprint heats or bonus sprints)
- the level of the competition
- the age and experience of the competitors

352.1.1.1 The following decision chart should be used when deciding on a sanction:



352.1.2 A hearing of the offender (ICR 224.7) may be organised:

- on demand of the jury if necessary
- on demand of the offender in case of submission of a protest according to ICR 361.

352.1.3 Sanctions for the violation of the technique rules can be given by a unanimous decision of two jury members (including TD) without video evidence.

352.1.4 For OWG, WSC and WC competitions sanctions can be given by a unanimous decision of the Race Director and the TD.

In the event that the TD or Race Director come from the same nation, the TD nominates a substitute from the jury members.

## 352.2 Disqualification

352.2.1 Disqualification should be used only for major infractions and for infractions with a clear impact on the final result of a competition.

- 352.2.2 In addition, competitors should automatically be disqualified if they:
- participate in the competition under false pretences
  - either jeopardize the security of persons or property or actually causes injury or damage
  - run more than one leg in a Relay competition (ICR art. 327.1.1)
- 352.2.3 Competitors who receive a second written reprimand in the same season will be automatically disqualified. Written reprimands given during the season are not valid in the JWSC, WSC and OWG periods. Written reprimands given during JWSC, WSC or OWG are valid until the end of the season.
- 352.2.4 During stage events or the first part of pursuit competitions an offence that is normally sanctioned with a DSQ can instead be sanctioned by a time penalty (see ICR art. 353.4). Using DSQ or time penalty will be the jury's decision.
- 352.2.5 After disqualification, the competitor's name will be shown on a revised result list indicating his/her status as DSQ and no times must be printed for this competitor.
- 352.2.6 In Sprint and Team sprint competition, if an infraction leads to disqualification and that infraction caused another athlete (or team) not to advance to the next round, the jury may allow the competitor (or team) to proceed into the next round. In this case the competitor or team concerned will start in the least favorable start position.
- 352.2.7 Competitors disqualified in sprints heats at Sprint competitions will keep their qualification result and will not be disqualified from the qualification result list.

### **352.3 Competition suspension**

- 352.3.1 Competition suspension can only be used for ICR infractions during sprint heats, team sprint heats and bonus sprints (both intermediate and finish) and popular competitions.
- 352.3.2 In Sprint competitions, a Competition Suspension means that the athlete will be ranked last in the heat and last in the round (6th for Final, 12th for 1/2 finals and 30th for 1/4 finals).
- 352.3.3 In Mass Start or Skiathlon competitions, a Competition Suspension means that the athlete will be relegated out of the result of a bonus sprint.
- 352.3.4 In popular competitions, suspension means that the competitor is ranked on last rank and his/her time is not published.
- 352.3.5 Competition suspension will always be accompanied by a written reprimand.
- 352.3.6 In Team Sprint competitions, a competition suspension means that the team will be ranked last in the heat and last in the round.

### **352.4 Time Penalty**

- 352.4.1 The following false start infractions should be sanctioned by time penalties:

- 352.4.1.1 In Interval Start competitions or Sprint qualifications, early start infractions should be sanctioned by a minimum time penalty of 15 seconds (the competitor's actual skiing time + 15 seconds minimum penalty).
- 352.4.1.2 In competitions with Pursuit Start, early start infractions should be sanctioned by a time penalty equal to the time gained (posted start time minus actual start time) + 30 seconds minimum penalty.
- 352.4.2 In stage events, the Jury can decide to substitute a DSQ with a 3 minutes time penalty (see ICR art. 353.2.4).

### **352.5 Written Reprimand**

- 352.5.1 Written Reprimand should be used for infractions of the rules that do not lead to a clear advantage for the offender or minor infractions with advantage to the offender.

### **352.6 Verbal Reprimand**

- 352.6.1 Verbal reprimand should be used for minor infractions or to inform competitors that their technique or behavior is very close to being in violation of the rules.

### **352.7 Monetary Fine**

- 352.7.1 Monetary fines can be given to any accredited person.
- 352.7.2 Monetary fine should be used for infractions of advertising and commercial markings rules, for minor course discipline infractions, for infractions to ICR 343.5 and for violation of restrictions on ski testing and warming up.
- 352.7.3 For competitors, a monetary fine may also be accompanied by a written reprimand.

## **F. PROTESTS AND APPEALS**

### **361 Protests**

#### **361.1 Types of Protests**

- 361.1.1 Against admittance of competitors or their competition equipment,
- 361.1.2 Against the course or its condition,
- 361.1.3 Against another competitor or against an official during the competition,
- 361.1.4 Against timekeeping results,
- 361.1.5 Against decisions of the Jury, Also see exceptions ICR art. 325.6.2 and 326.6.2.
- 361.1.6 Against clerical errors or violations of the FIS Rules after the competition

## **361.2 Place of Submission**

The various protests are to be submitted as follows:

- 361.2.1 Protests according to the ICR art. 310 – 344.4 at the location designated on the official notice board or at a place announced at a team captains' meeting.
- 361.2.2 Protests concerning clerical errors or violations of the FIS Rules after the competition must be sent by registered post through the competitor's National Association to the FIS Office within one month of the competition.

## **361.3 Deadlines for Submission**

- 361.3.1 Against the admittance of competitors
  - before the draw
- 361.3.2 Against the course or its condition
  - not later than 15 minutes after the end of official training
- 361.3.3 Against another competitor or competitor's equipment or against an official because of irregular behavior during the competition
  - within 15 minutes after the posting of the unofficial result list.
- 361.3.4 Against the timekeeping
  - within 15 minutes after the posting of the unofficial result list.
- 361.3.5 Against Jury decisions that are not sanctions
  - within 15 minutes after the posting of the unofficial result list.
- 361.3.6 Against clerical errors or violations of the FIS Rules after the competition
  - within one month of the competition.

*For Canadian competitions where multiple race categories are scheduled, official protests as outlined in 361.3.3 – 361.3.5 must be submitted 15 minutes after the posting of unofficial results for the last age category of the day*

## **361.4 Form of Protests**

- 361.4.1 Protests are to be submitted in writing.
- 361.4.2 Protests must be substantiated in detail. Proof must be submitted and any evidence must be included.
- 361.4.3 CHF 100. – or the equivalent in another valid currency must be deposited with the submittal of the protest. This deposit will be returned if the protest is upheld. Otherwise it goes to the account of the FIS.

- 361.4.4 A protest may be withdrawn by the protesting party before the publication of a decision by the Jury. In this case, the money deposit must be returned.
- 361.4.5 Protests not submitted on time or submitted without the protest fee are not to be considered.

*For Canadian Tier I & Tier II competitions not sanctioned by FIS, \$100 Cdn must be deposited with the submittal of the protest. This deposit will be returned if the protest is upheld, otherwise it goes to the account of Nordiq Canada.*

### **361.5 Authorization**

The following are authorized to submit protests

- the National Ski Associations
- team captains.

### **361.6 Settlement of Protests by the Jury**

- 361.6.1 The Jury meets to deal with the protests at a predetermined place and time fixed and announced by it.
- 361.6.2 At the vote on the protest, only the Jury members are to be present. The TD chairs the proceedings. Minutes of the proceedings are to be kept and signed by all voting members of the Jury. The decision requires a majority of all voting members of the Jury, not just of those present. In case of a tie, the TD's vote is decisive.
- 361.6.3 The decision is to be made public immediately after the proceedings by posting on the official notice board with the publication time stated.

## **362 Right of Appeal**

### **362.1 The Appeal**

- 362.1.1 *It can be made*
- against all decisions of the Jury (see also ICR 224.11)
  - against the official result lists. This appeal has to be directed exclusively against an obvious and proven calculation mistake.
- 362.1.2 Appeals must be submitted to the FIS by the NSA.

*For Canadian Tier I & Tier II Competitions not sanctioned by FIS, appeals must be submitted to the Chair of Nordiq Canada's Competition Appeals Commission*



### **362.1.3 Deadlines**

- 362.1.3.1. Appeals against the decisions on the Jury are to be submitted within 48 hours of the publication of the official results list
- 362.1.3.2 The appeals against the official results are to be submitted within 30 days, including the day of the competition.
- 362.1.4 The decision concerning the appeals are taken by
  - the Appeals Commission
  - the FIS Court.

*For Canadian Tier I & Tier II Competitions not sanctioned by FIS, decisions concerning appeals are taken by:*

- Nordiq Canada Competition Appeals Commission
- Appeals of the Appeal Commission decision are made through the *The President of Nordiq Canada as outlined in the Nordiq Canada Dispute Resolution and Appeal Policy*

### **362.2 Postponing Effect**

The evidence submitted (protest, appeal) may not cause a postponement of the appeal.

### **362.3 Submission**

All evidence must be in writing to be substantiated. Proof and evidence are to be included. Evidence submitted too late must be declined by the FIS. (See ICR art. 362.1.3.1). In order to file an appeal it must be accompanied with a deposit of CHF 500, which will be refunded if the appeal is upheld.

*For Canadian Tier I & Tier II Competitions not sanctioned by FIS all evidence must be in writing to be substantiated. Proof and evidence are to be included. Evidence submitted too late must be declined by Nordiq Canada. (See CCR art. 125.1.2). In order to file an appeal it must be accompanied with a deposit of \$500 Cdn, which will be refunded if the appeal is upheld.*

## **G. POPULAR CROSS-COUNTRY COMPETITIONS**

### **380 Definition of Popular Cross-Country Competitions (PCCC)**

#### **380.1 Competitions**

- 380.1.1 Popular Cross-Country Competitions (PCCC) are competitions open to all Cross-Country competitors, licensed and non-licensed, without limitation on competition distance or format.

### **381 Entries and Competitors**

#### **381.1 Entries**

- 381.1.1 Entries should be forwarded promptly by mail, by e-mail or by facsimile transmission in accordance with regulations in the invitation. Early entries may receive a reduced entry fee. Additional fees may be charged for late entries.

#### **381.2 Licenses**

- 381.2.1 Licensed competitors are responsible for complying with the license requirements of their own NSAs.

#### **381.3 Seeding**

- 381.3.1 Competitors may be placed in different starting positions according to their competitive abilities. The seeding may include an elite start group. The seeding of the elite start group should be according to the competitors FIS-points or other ranking system like a mass start competition (see ICR art. 314.5 and 314.6) and competitors without FIS-points should be seeded based on known previous performance or by nomination of the competitors NSA.

*For Canadian competitions: the Distance CPL will be used to rank athletes.*

#### **381.4 Grouping**

- 381.4.1 Competitors may be grouped in accordance with results from previous years' competitions or other competitions. They may also be grouped by sex and age or by date of submission of competition entry.

#### **381.5 Results**

- 381.5.1 Separate result list must be published for men and ladies.

## **381.6 Competitors**

- 381.6.1 Popular cross-country competitions are organized for the enjoyment of all participating competitors. Because these competitions involve competitors with a wide range of experience and ability, good sporting behaviour and courtesy toward other competitors are essential. Competitors who demonstrate unsporting behavior or do not follow these Rules or the rules of the competitions may be sanctioned by the Jury. During a Popular cross- country competition competitors must
- follow the marked course from the start to finish passing all control points
  - complete the course on skis using only their own means of propulsion and without assistance from others
  - neither hinder nor interfere with other competitors
  - make a reasonable effort to allow faster competitors to pass. Normally slower competitors should use the right track or side of the course, faster competitors the left
  - comply with the special regulations of the competition (e.g. littering).
- 381.6.2 The age classes should follow the same principles as defined in ICR 341.1.
- 381.7 For Popular Cross-Country races on the FIS WC or Marathon Cup calendar, all Competitors placed in an elite group must comply with ICR article 207 “Advertising and Commercial Marking” and with article 222 “Competition Equipment”
- 381.8 ICR 343.12.6 does not apply to competitors outside of the seeded group.

## **382 Information**

### **382.1 Announcement**

- 382.1.1 The announcement should contain the following information
- name of the competition
  - competition site and the alternative site, if any
  - course distance (s) and technique (s)
  - competition date and starting time
  - seeding procedures
  - entry deadline
  - registration fee
  - lodging and transportation information
  - prizes and awards
  - refund policy if the competition is cancelled
  - insurance regulations
  - any other useful or necessary information

## **382.2 Information for Competitors**

**382.2.1** *Before the start of the competition, competitors should receive information regarding the following*

- starting time
- course description and profile
- technique(s)
- transportation information
- identification sticker and control card, if any
- ski-marking
- starting procedures
- warm-up area and procedures
- feeding station locations and refreshments available
- procedure to follow if a skier does not complete the competition
- finish line procedure
- information regarding emergency medical procedures
- cut-off times, if any
- clothing drop off and pickup sites
- changing area, shower location, and food sites
- results service with grouping and announcements
- protest procedures
- prizes and awards
- procedures for short notice competition cancellation
- time and location of Team Captains' and Jury meetings, press conferences and other meetings
- communication services
- other necessary information

## **384 The Course**

### **384.1 Width**

**384.1.1** All obstacles must be cleared from the course to a width that allows, at a minimum, double tracks to be set throughout the length of the course. For free technique competitions the course width should allow unhindered overtaking.

### **384.2 Start Area**

**384.2.1** The start area should be flat or nearly flat. It should lead directly into the course and be wide enough to avoid excessive crowding. The start should gradually narrow to the width of the course over a distance sufficient in length to allow competitors to spread out before entering the tracks. The start area should be organized to provide for

- ski-marking
- control of competitor identification
- control of commercial markings
- competitor seeding
- crowd control.

### **384.3 Finish Area**

384.3.1 The course should enter the finish area on a straight and flat approach. The finish area should be flat and sufficiently wide to allow several competitors to finish at the same time without impeding each other. The last 200 meters should have a width of at least 10 meters and be divided into at least 3 lanes separated with appropriate markings. Where more than one competition ( two races of different distances) are held over the same course at the same time, separate finishing lanes should be provided to ensure that the leaders in the longer competition are not hindered by slower finishers in the shorter competition. The finish area should be designed and equipped for the necessary control functions and to avoid crowding. Interview (mixed) and flower ceremony zones should be fenced and separated from the crowd of finishing participants and spectators. Feeding, access to clothing, showers or transportation to such facilities should be clearly marked in different languages and available near the finish area.

### **384.4 Course Preparation**

#### **384.4.1 Pre-season**

The course should be groomed and maintained to ensure that the competition can be held safely with a minimum of snow cover.

#### **384.4.2 Winter preparation**

The course should be packed and groomed throughout the winter to ensure a solid base for final preparation.

#### **384.4.3 Free Technique**

In free technique competitions, the course should be well packed and wide enough to allow two competitors to ski side by side. Where appropriate, one single track may be set along the side of the course. The last 200 meters should be prepared to a width of at least 10 m. This section should be divided into at least 3 lanes and separated with appropriate markings.

#### **384.4.4 Classical Technique**

Normally the course should be set with two tracks. Where the width makes it possible, more tracks should be set. In steep downhills or other locations as designated by the TD and chief of competition, no tracks should be set. In the finish area, the last 200 meters should be set with as many tracks as possible. In appropriate situations, with approval of the TD and the chief of competition, course grooming may take place during the competition.

#### 384.4.5 Both Techniques

Competitions may be carried out in both techniques at the same time and on the same course. In such cases, the course for free technique should be separated from the classical course with appropriate barriers or markings so classical competitors do not have the opportunity to use the other course and vice versa. Each course should be packed and prepared in accordance with ICR art. 384.4.3 and 384.4.4.

### 384.5 Measuring and Marking

384.5.1 The competition course must be measured for length from start to finish by GPS device, chain, tape or measuring wheel. Each kilometer should be marked. The last 500 meters and the last 200 meters should also be marked. Places such as steep downhills, curves, crossings should be given special marking.

### 384.6 Feeding

384.6.1 Feeding stations should be provided approximately every 10 km. If the course is difficult, the distance between the feeding stations may be shortened. In easy terrain, the distance may be increased. For competitions longer than 50 km different types of drinks and other appropriate nourishment should be provided.

384.6.2 When team officials give refreshments to their competitors, they must follow ICR art. 344.2.

*In Canadian competitions the types of food and drink available at feeding stations should be made known beforehand to competitors and, wherever possible, should be laid out in the same order at each feeding station. Drinks should always be warmed before serving and must not be allowed to get cool by being poured out too soon before the arrival of the first racers.*

### 384.7 Course Layout

384.7.1 Popular cross-country competitions should be conducted to accommodate all levels of competitors from recreational racers to elite athletes. Course layout should be adapted to the skill levels of the competitors.

### 384.8 Bonus sprints

384.8.1 When having sprints along the course, the final approach to the sprint should be minimum 50 m straight that is wide enough for 2 competitors to sprint side by side. The bonus sprint finish line must be clearly marked. Sprint controllers must be assigned to each bonus sprint.

## **385      Control**

### **385.1      Control Procedure**

385.1.1 All aspects of the competitions must be controlled in a manner to ensure the safe and fair conduct of the competition for the competitors. The location of control points and utilization of controllers should be determined by the chief of competition in consultation with the TD, giving particular attention to the following

- technique control, if any
- completion of the entire competition course without shortcuts
- completion of the entire competition on skis
- ensuring any support or assistance given competitors is in accordance with the ICR
- compliance with ICR commercial markings regulations
- providing a competition course free from obstructions
- ensuring competitors do not obstruct or hinder one another
- control at sprint positions and finish line
- other control aspects as required.

385.1.2 Controllers should be qualified to perform their assigned duties.

## **386      Medical and Safety**

### **386.1      Medical Officer**

386.1.1 A chief of medical and rescue service will be appointed for every Popular cross-country competition. They will be a member of the Competition Committee and may be invited to attend the Jury meetings. The chief medical officer must be a licensed medical officer.

386.1.2 First Aid and Medical Service

The first aid and medical services must be completely operational during all training times. Details of the Medical Support Requirements are given in chapter 1 of the FIS Medical Guide containing Medical Rules and Guidelines.

### **386.2      Planning**

386.2.1 The medical officer shall prepare an emergency first aid, evacuation, and notification plan for injuries, accidents, or deaths. Information regarding this plan and procedures to be followed in the event of injury, accident, or death should be provided to competitors and competition officials.

### **386.3 Training**

- 386.3.1 The medical officer shall designate, inform and train a sufficient number of medical, safety and emergency personnel to provide for the safety and medical needs of the competitors.

### **386.4 First Aid Stations**

- 386.4.1 The location of first aid stations shall be marked by appropriate signs along the course. There shall be heated first aid stations in the start and finish areas.

## **387 Sanctions, Protests and Appeals**

- 387.1 In principle art. 352 applies. Any evidence on rules infraction, submitted within 48 hours after the last participant has finished the main race, must be considered and decided by the competition jury within 72 hours after the first competitor has finished the race.
- 387.2 Protests concerning skiers with active FIS codes can be filed within 1 hour after the first competitor has finished the main race. Such a protest must be filed according to ICR 361.4 and 361.5.
- 387.3 Protests concerning other competitors can be filed within 48 hours after the first competitor has finished the main race. Such a protest must be filed according to ICR 361.4.
- 387.4 Competitors with no active FIS codes have no right to appeal.

## **388 Cold Weather Precautions**

### **388.1 Background**

- 388.1.1 There are three main factors to be considered by the Jury regarding cold weather safety: the temperature; the duration of the exposure; and, the clothing and other protection against cold weather. These factors together with any other relevant information such as the "wind chill factor" must be taken into consideration when a decision is made regarding cold weather.

### **388.2 Between minus 15° and minus 25° C**

- 388.2.1 If the temperature level is forecast to be between minus 15° and minus 25° C at any point on the course, recommendations regarding cold weather protection should be made available to the competitors. Under such conditions it is the responsibility of the competitors to seek the information and to follow the recommendations given by the organizer.

### **388.3 Minus 25° C and below**

- 388.3.1 If the temperature in a major portion of the course is minus 25° C or below, the competition shall be delayed or cancelled.



## **388.4 Warm Weather Precautions**

- 388.4.1 If the temperature is forecast to rise above 5 degrees C during the course of the competition, and exposure to sunshine is expected, recommendations must be given to competitors concerning clothing, skin protection and the need to consume adequate liquid before and during the competition. Feeding stations must ensure that they have adequate drinks to meet the increased demand. First aid stations must be briefed to be alert for signs of dehydration or any damage from sun exposure and be prepared to take necessary measures in cases of dehydration or sunburn.

## **389 Cancellation Procedure**

### **389.1 Policy**

- 389.1.1 Normally the factors to be considered for the cancellation or the postponement of a competition are: temperature, weather conditions, snow conditions and course conditions. If a competition is postponed, a new date should be arranged with the NSA concerned.
- 389.1.2 Cancellation or Postponement more than Six Days before the Competition
- If a decision to cancel or postpone a competition is taken at least 6 days before the date of the original competition, the organizing committee must immediately inform the NSAs, the media and post the information on the Internet. This decision will be made by the Organizing Committee in consultation with the TD.
- 389.1.3 Short Notice Cancellation
- A short notice cancellation is made six or fewer days before the date of the competition. However, a competition cannot be cancelled less than three hours before the scheduled start time except for the competitors' and officials' safety. The cancellation procedure must be included in the information to the competitors (see ICR art. 382.2). The cancellation decision shall be made by the Jury.
- 389.1.4 Refund Policy
- If a competition is postponed, competitors who have paid the entry fee should be allowed to compete in the postponed competition without additional charge. If competitors decide not to compete in the postponed competition, the entry fee will not be refunded. The policy for refunds in a cancelled competition should be stated in the announcement for the competition (ICR art. 382.1).

## **390 International Ski Competition Rules**

### **390.1 Fundamental Rule**

- 390.1.1 All matters not covered within this section G are subject to the provisions in section A – H of the International Ski Competition Rules, book II.

## H. ROLLERSKI COMPETITIONS

### **396 Rollerski Competitions**

#### **396.1 Rollerski ICR Definitions**

- 396.1.1 The matters covered within this section of the ICR are intended to focus on the unique aspects of Rollerski sport that are significantly different from the methodologies used in Cross-Country ski sport as outlined in the previous sections of this ICR publication.
- 396.1.2 The previous sections in this ICR will be used to give specific requirements in areas where there is direct similarity between Rollerski and Cross-Country (including ICR art. 200 – 226.2).
- 396.1.3 In addition, the underlying principles and format procedures that apply in the Cross-Country sections of this ICR must also be applied to Rollerski sport.

#### **396.2 Competition Equipment**

- 396.2.1 Rollerski sport equipment must be available as a commercially produced product that is available to the general public.
- 396.2.2 The OC in cooperation with TD must carry out equipment control before the start and after finish of each competition. Rollerski wheel dimensions, wheel material hardness and frame length must be controlled.
- 396.2.3 The diameter of the wheels must not be more than 100 mm.
- 396.2.4 The distance between the axles of the Rollerskis must not be less than 530 mm.
- 396.2.5 In classic technique competitions, each Rollerski must have ratched mechanism.
- 396.2.6 Cross country ski poles with Cross-Country skiing tips must be used. Alternatively pole tips must have safety rigid plastic protections with diameter  $\geq 30$  mm. These protections must be placed maximum 45 mm above the metallic tips.  
  
This rule will be implemented from 1<sup>st</sup> July 2022.
- 396.2.7 Safety helmets (e.g. DIN EN 1078 or equivalent) and eye protection must be worn during official training and competition.
- 396.2.8 Shoes or ski boots have to be fixed on the Rollerskis with a Cross-Country ski binding.
- 396.2.9 Roller ski changes must be done according to 343.12.2 – 343.12.3.
- 396.2.10 In order to provide safe and fair conditions for the competition the organizer and jury can limit the technical parameters for Rollerski equipment (wheels, etc) by announcing it in advance in the competition invitation.

- 396.2.11 The competition organizer can provide Rollerskis from an official rollerski equipment supplier for all athletes entered in competition. This must be clearly announced in official invitation. The Rollerskis must be distributed to the athletes by a draw supervised by a jury member.
- 396.2.12 If the competition organizer provides official rollerski equipment, rollerski exchange during the competition may be done only at an official service point (boxes) according to articles 343.12.2 – 343.12.3.
- 396.2.13 If the Competition Organizer provides official rollerski equipment, rollerski repair during official training or before competition may be done only at an official service point provided by the organizer.

### 396.3 Competition Formats and Programs

- 396.3.1 The following competition formats and recommended distances may be used and the competitions may be carried out in either classic or free technique:

Competition format	Competition distance (km)	Course length (km)
Individual Start	2.5, 3.3, 3.75, 5, 7.5, 10, 15, 30, 50	2.5, 3.3, 3.75, 5, 7.5, 8.3, 10, 12.5, 15, 16.7
Mass Start	10, 15, 30, 50	2.5, 3.3, 3.75, 5, 7.5, 8.3, 10, 12.5, 16.7
Popular Roller Ski	No limit	No limit
Skiathlon	5+5, 7.5+7.5, 10+10, 15+15	2.5, 3.3, 3.75, 5, 7.5, 10
Pursuit (2 <sup>nd</sup> part)	5, 7.5, 10, 15	2.5, 3.3, 3.75, 5, 7.5, 10
Relay Teams with 3 or 4 athletes, can have mixed genders	2.5, 3.3, 5, 7.5, 10	2.5, 3.3, 3.75, 5
Individual Sprint	0.2 – 1.8	0.2 – 1.8
Team Sprint	2x(3-6) x 0.8 – 1.8	0.4 – 1.8

This table is valid for organizing multi-lap races but when choosing a short course with many laps the overall distance, start format and course width must be considered.

All distances shall be measured to +/- 5% accuracy.

Interval start, Mass Start and Skiathlon competitions can be organized on undulating or uphill courses. Individual Sprint up to 200m may be organized on flat or uphill course (with a maximum allowed average inclination of 10%).

## 396.4 Course and Stadium

- 396.4.1 Rollerski competitions are held on asphalt or similar artificial or natural surfaces that are hard packed.
- 396.4.2 The course must be designed with the highest priority being given to the safety of competitors.
- 396.4.2.1 A Rollerski competition course does not have any homologation requirements but should include some demanding uphill sections.
- 396.4.3 Obstacles or hazardous objects along or beside the track must be removed, or if not possible, they must be clearly marked and where necessary protected by padding.
- 396.4.4 Recommended course norms:

Race Format	Classical technique	Free technique
<b>INTERVAL START</b>		
<b>Course</b>		
Width of course (minimum)	3 m	4 m
<b>Start</b>		
Number of corridors	1	1
<b>Finish</b>		
Total width (minimum)	3.6 m	6 m
Number of corridors	3	3
<b>PURSUIT</b>		
<b>Course</b>		
Width of course (minimum)	4 m	5 m
<b>Start</b>		
Organisation/preparation	2 - 4 corridors	2 - 4 corridors
Width of start area (minimum)	4 m	6 m
<b>Finish</b>		
Total width (minimum)	4 m – 5 m	6 m – 8 m
Number of corridors	3 – 4*	3 – 4*
<b>MASS START, SKIATHLON</b>		
<b>Course</b>		
Width of course (minimum)	4 m	6 m
<b>Start</b>		
Organisation/preparation	Arrow start grid	Arrow start grid
Width of start area (minimum)	5 m	6 m
Number of corridors	Odd number 3;5*	Odd number 3;5*
<b>Finish</b>		
Total width (minimum)	4 m – 5 m	6 m – 8 m
Number of corridors	3 – 4*	3 – 4*

\* The number, width and length of corridors will be determined by the Jury according to the competition formats and finish area layout (uphill or flat)

- 396.4.5 The downhill sections must not have any sharp curves. If a curve is deemed dangerous, the OC and jury must implement speed-reducing measures (carpet, artificial turf, etc.).
- 396.4.6 Safe and secured warm up and cool down areas must be available near the competition course.

### **396.5 General Course Preparations**

- 396.5.1 Courses should be ready for inspection and for official training by the competitors at least one day before the competition.
- 396.5.2 The competition courses must be closed to normal traffic. Only the competitors, OC, safety guards, Jury and security/TV vehicles are allowed to be on the competition course during the competition or during official training.

### **396.6 Requirements of the Competitors**

- 396.6.1 The competition season is defined as 1st July to June 30th. See CC ICR art. 331.1 for age categories.
- 396.6.2 Methods of grouping
  - 396.6.2.1 Refer to the Rules for the FIS Rollerski World Cup/World Championships for special seeding rules.

### **396.7 Refreshment Stations**

- 396.7.1 During competitions which are 8 km or less, refreshment services are only permitted in the finish zone after the finish line.
- 396.7.2 For competitions longer than 8 km but less than 30 km, refreshment services are allowed along the course without the use of motorized vehicles. For competitions longer than 30 km, motorbikes may be allowed at the discretion of the jury.
- 396.7.3 For uphill competitions the Jury decides the location of the refreshment stations.

### **396.8 Start and Finish Requirements**

- 396.8.1 The start line, finish line, corridors and exchange zones must be clearly marked on the surface.
  - 396.8.1.1 At Mass Start free technique competitions a no skating zone must be clearly marked after the start.
  - 396.8.1.2 For World Cup during Mass Starts and Pursuit competitions, it is required to video tape the no-skating areas at the start and the finish with a minimum of two digital video cameras.

396.8.1.3 There must be radio or phone contact between the start and the finish area.

### **396.8.2 Finish Area Requirements**

396.8.2.1 For Rollerski World Cup and Rollerski World Championships the finish corridors must be videotaped using a minimum of 2 digital video cameras. Play back units must be available in the jury room.

396.8.2.2 The Finish Zone (Roll Out Zone) which follows the finish line must be a minimum of 70 m long for sprint competitions (depending on inclination). For distance competitions the jury will decide on the length. The finish control line must be after the roll-out zone. Competitors are not allowed to take off their rollerskis until they pass the control line.

396.8.2.3 The start area, the finish area and the exchange area must be secure and completely fenced off from spectators and unauthorized personnel.

### **396.9 Exchange Zone**

396.9.1 The exchange zone for Team Relay or Team Sprint should be a minimum of 10 m wide and 15 m in length.

396.9.2 False start during Team Relay or Team Sprint exchange must be sanctioned by time penalty (actual time gained + 15 seconds minimum penalty).

396.9.3 The exchange zone must be clearly marked with a line at the beginning of the zone. When the front wheel of the arriving competitor reaches this exchange line the corresponding teammate is allowed to depart the exchange zone. No physical contact between the competitors is required.

### **396.10 Classical Roller Ski Technique**

396.10.1 In classical technique competitions, the maximum pole length must not exceed 83% of the competitor's body height plus 2 cm. The measurements and rounding must correspond to provisions of ICR art 343.8.1.